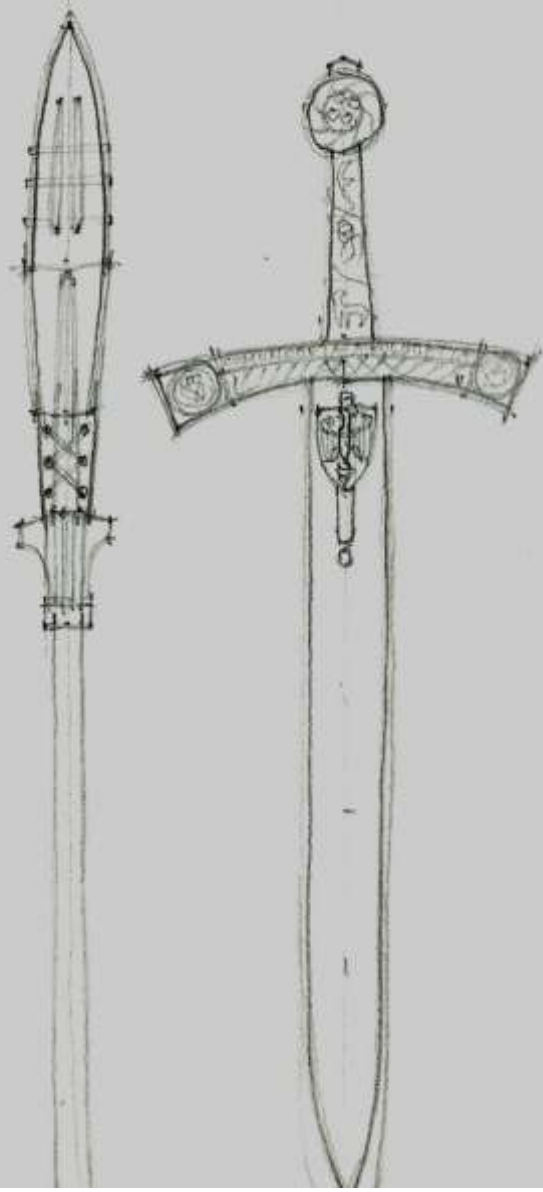
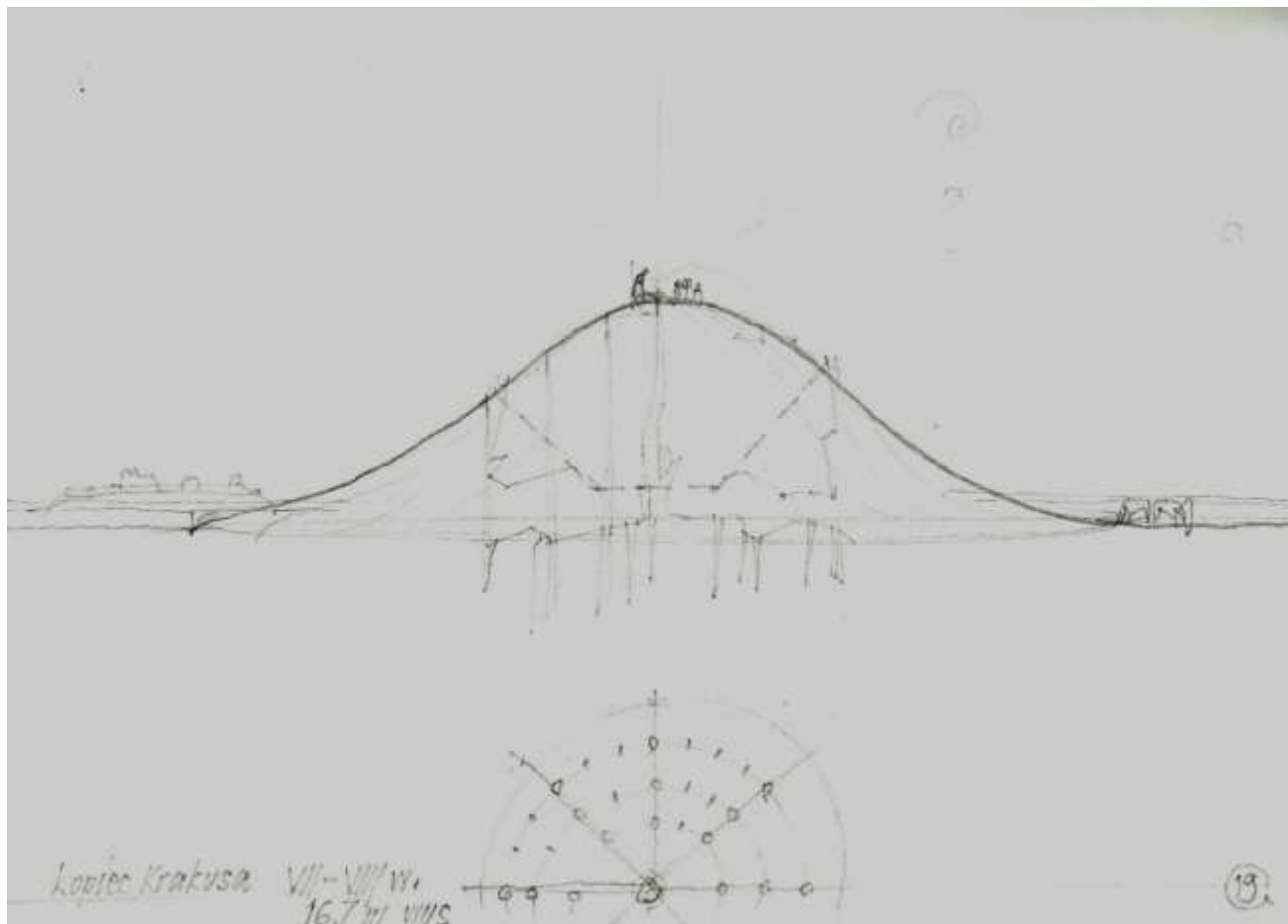


wtórnia sw. Maurycego
od 1700 r. do lat 80. st. XVIII



niżej koronowany "Szczepiec" nr. 1725 r. (1520) piersza koronowy na prawy
w Szkoły Koronowy na prawy



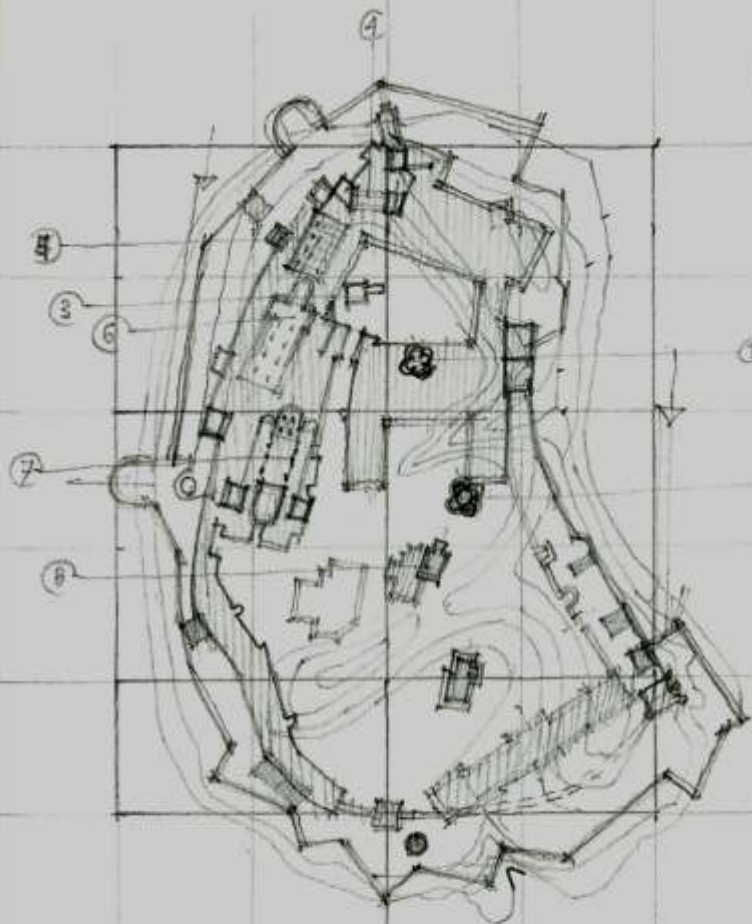
Kopiec Krakusa VII-VIII w.
16.7.1911 VIII

19



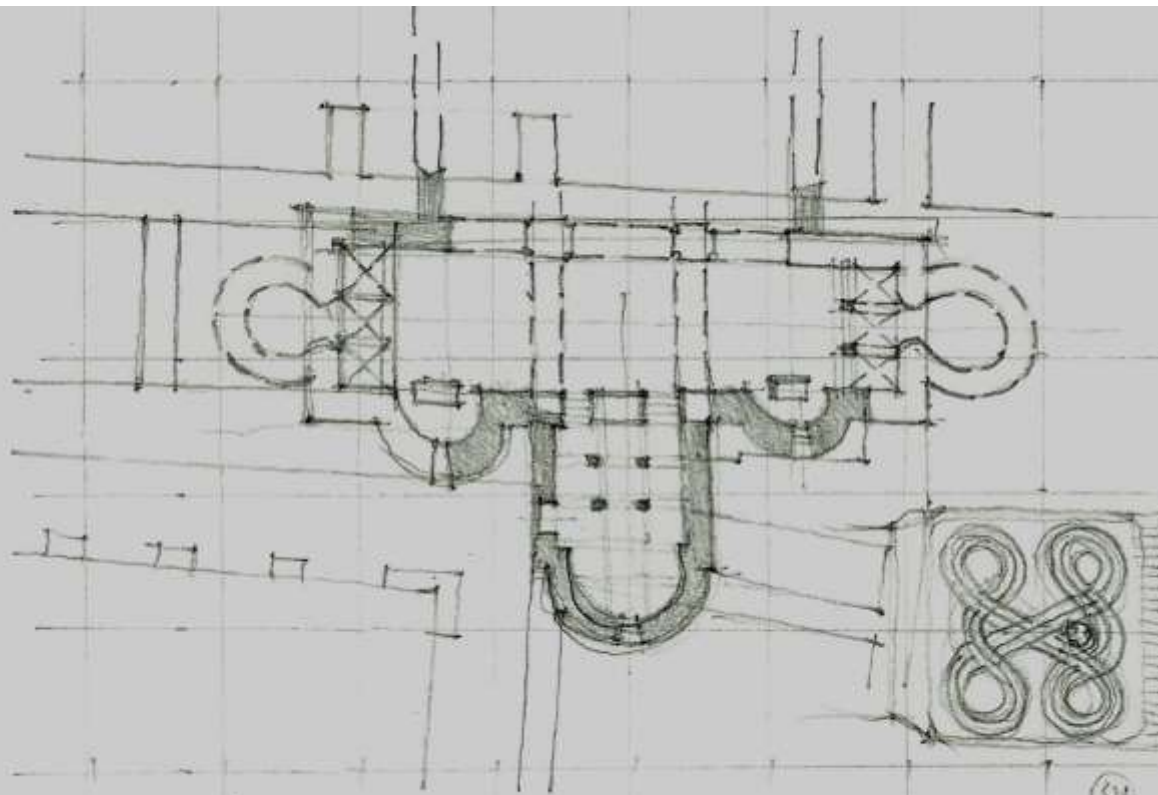
restoration of the N. Marii Church
of XV W. by Svi Feliks i Yulianka

33



względe Wawelskie w okresie romańskim

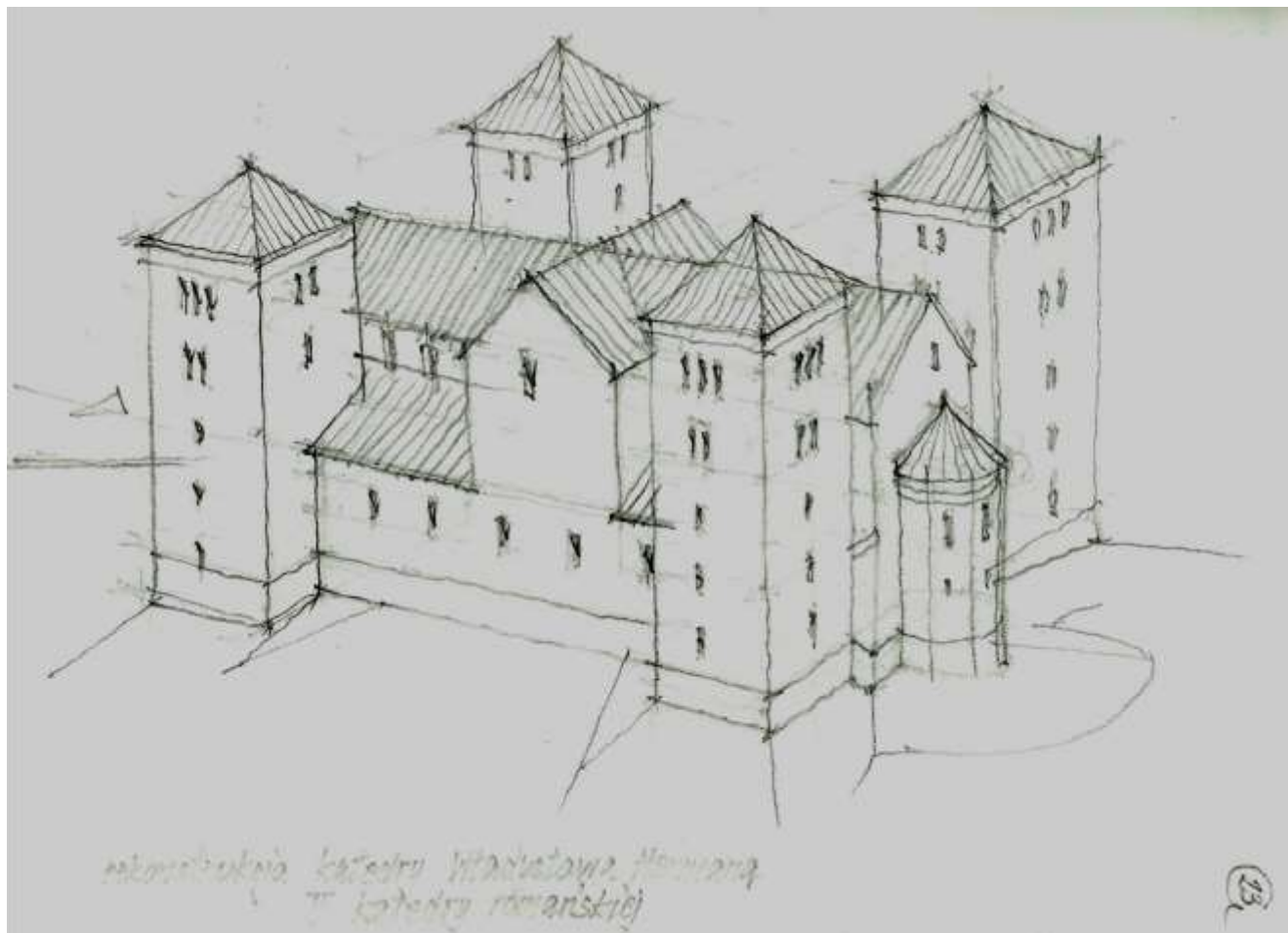
- | | | | |
|---|---------------------|---|---------------------|
| 1 | refektoria NMP | 5 | sala "24" studów |
| 2 | kościół "B" | 6 | prerwisza katedra |
| 3 | budynki czworokątne | 7 | druga katedra |
| 4 | gródka | 8 | kościół św. Michała |



plan wschodniej części katedry "chrobrowskiej"

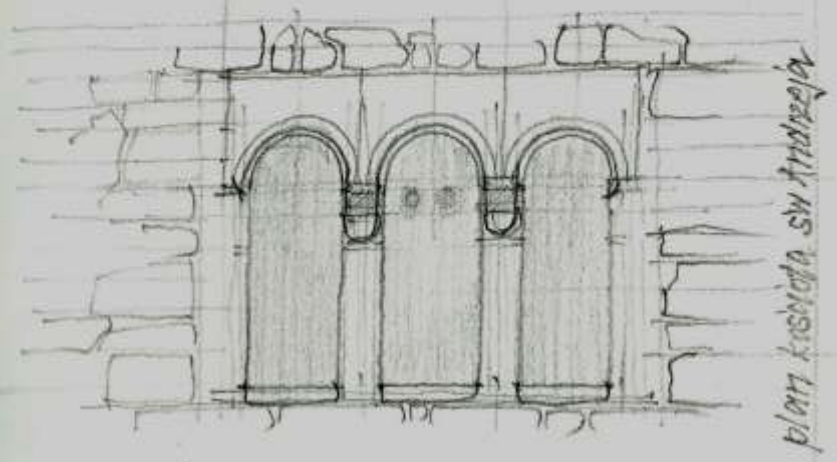
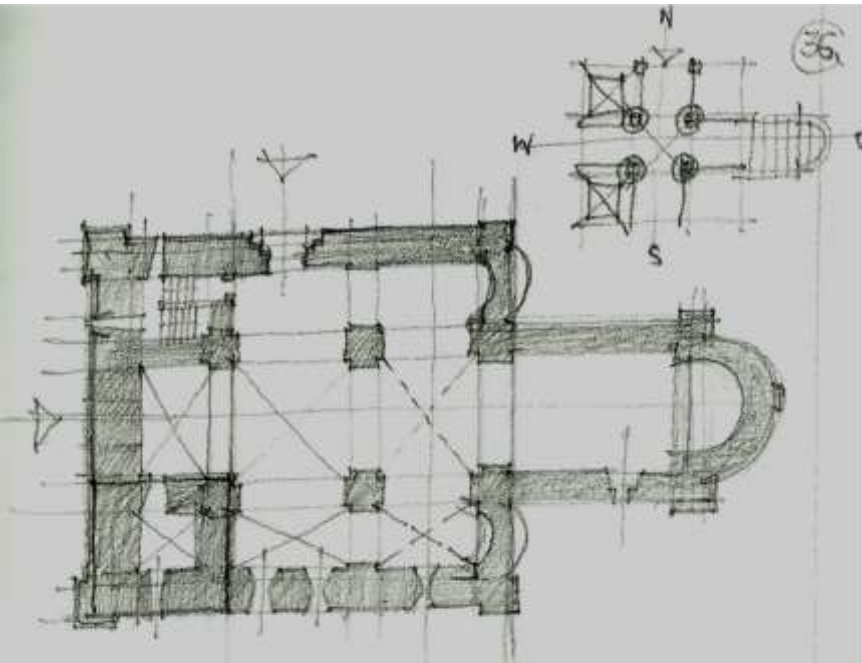
kapitel kolumny z T katedry

35



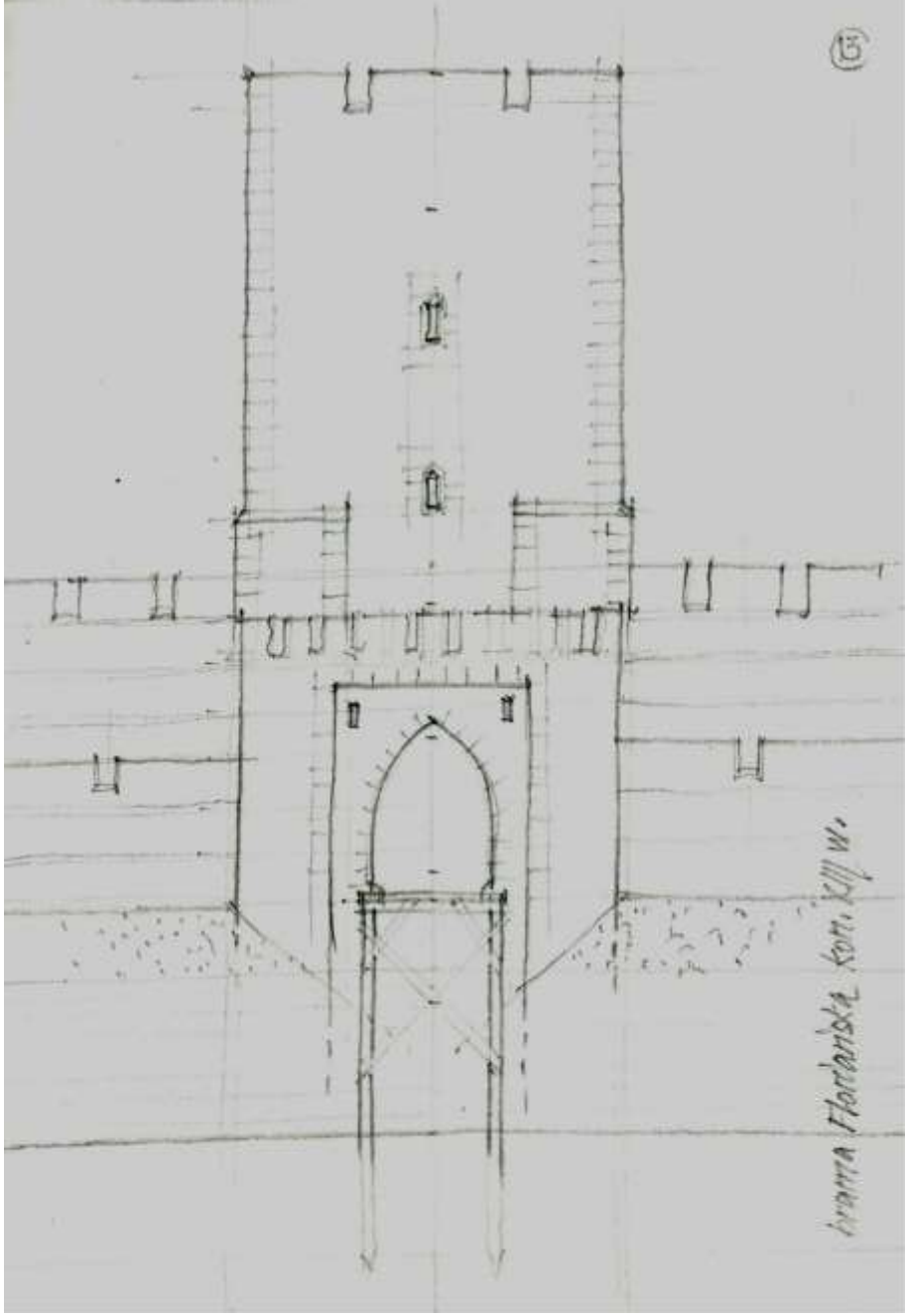
sketch of a large, multi-story building with several towers and a central entrance. The drawing is done in black ink on a light background. The building features multiple gabled roofs, some with decorative elements, and numerous windows. A prominent tower on the right side has a conical roof. The sketch is signed '13' in the bottom right corner.

13

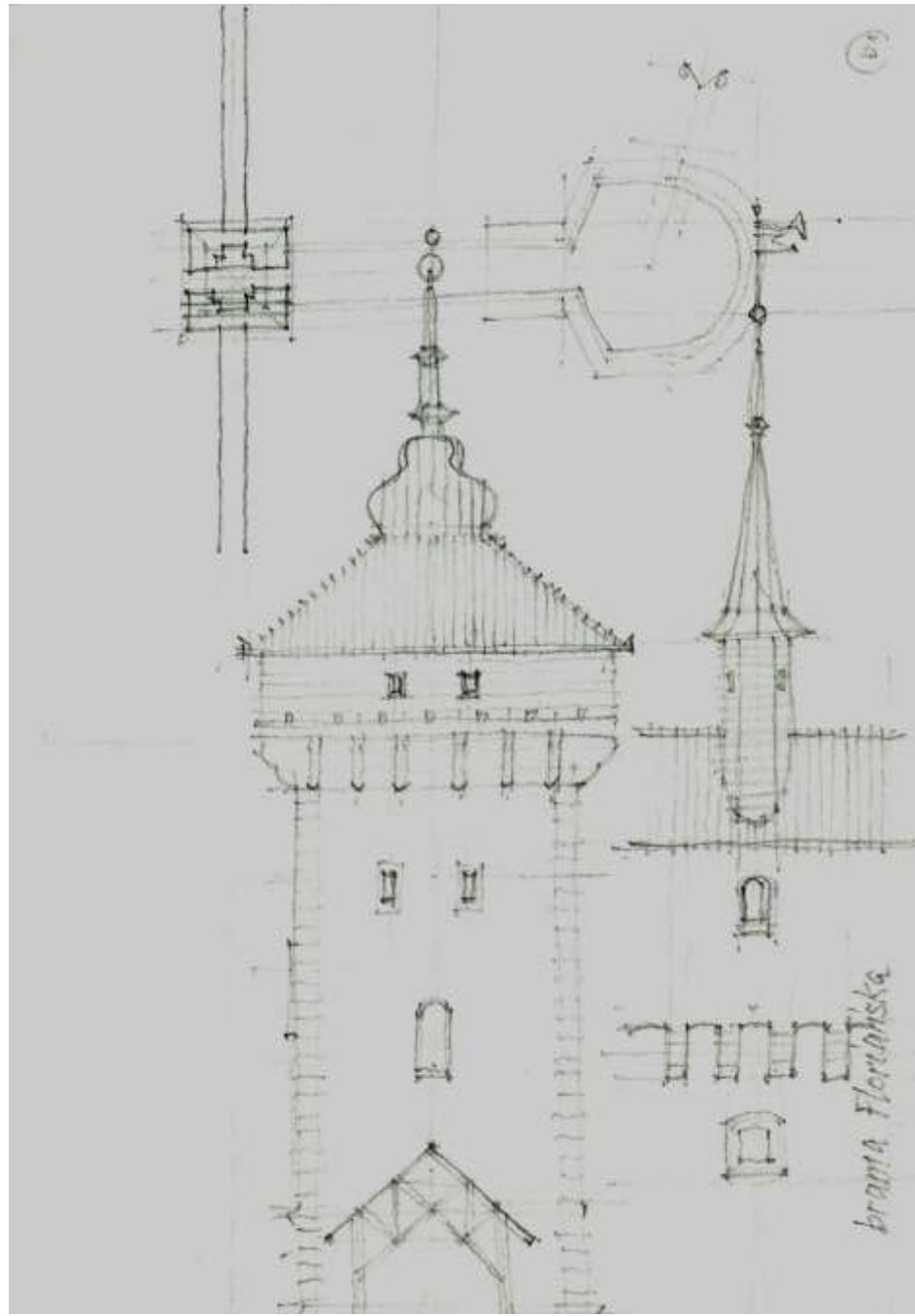
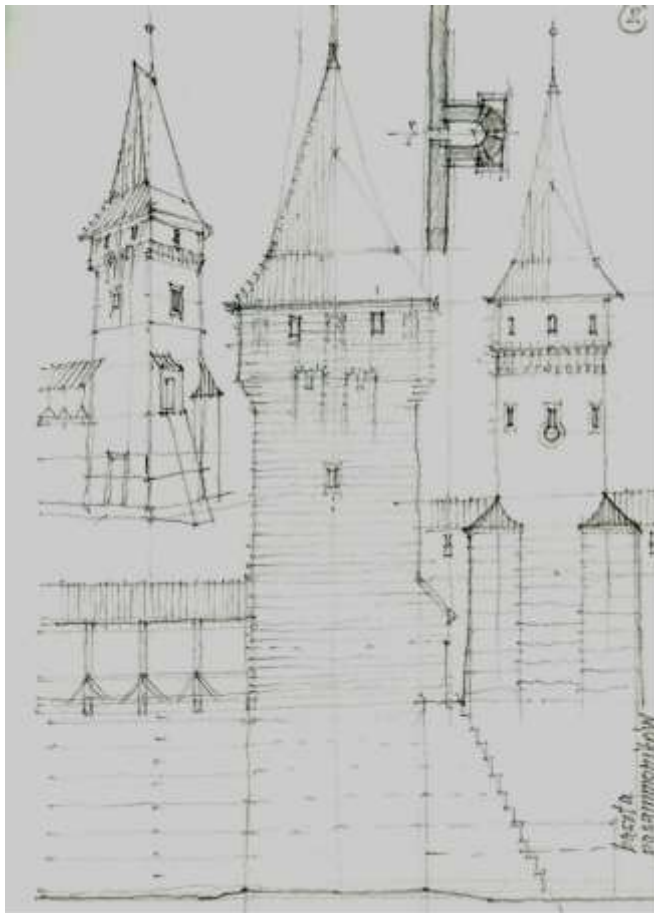


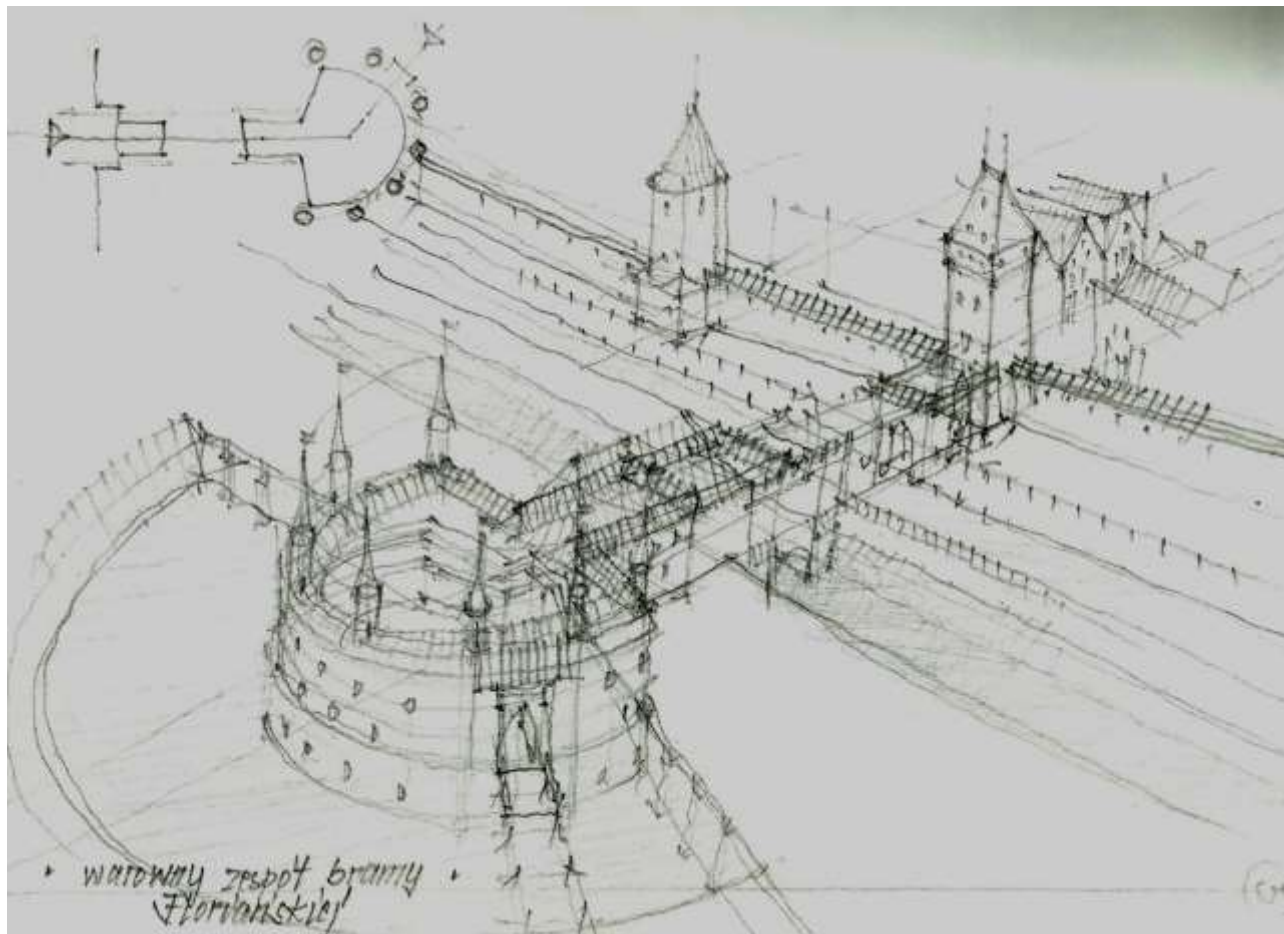
triforium w fasadzie frontowej

6



brama Florariska kom. Kij W.



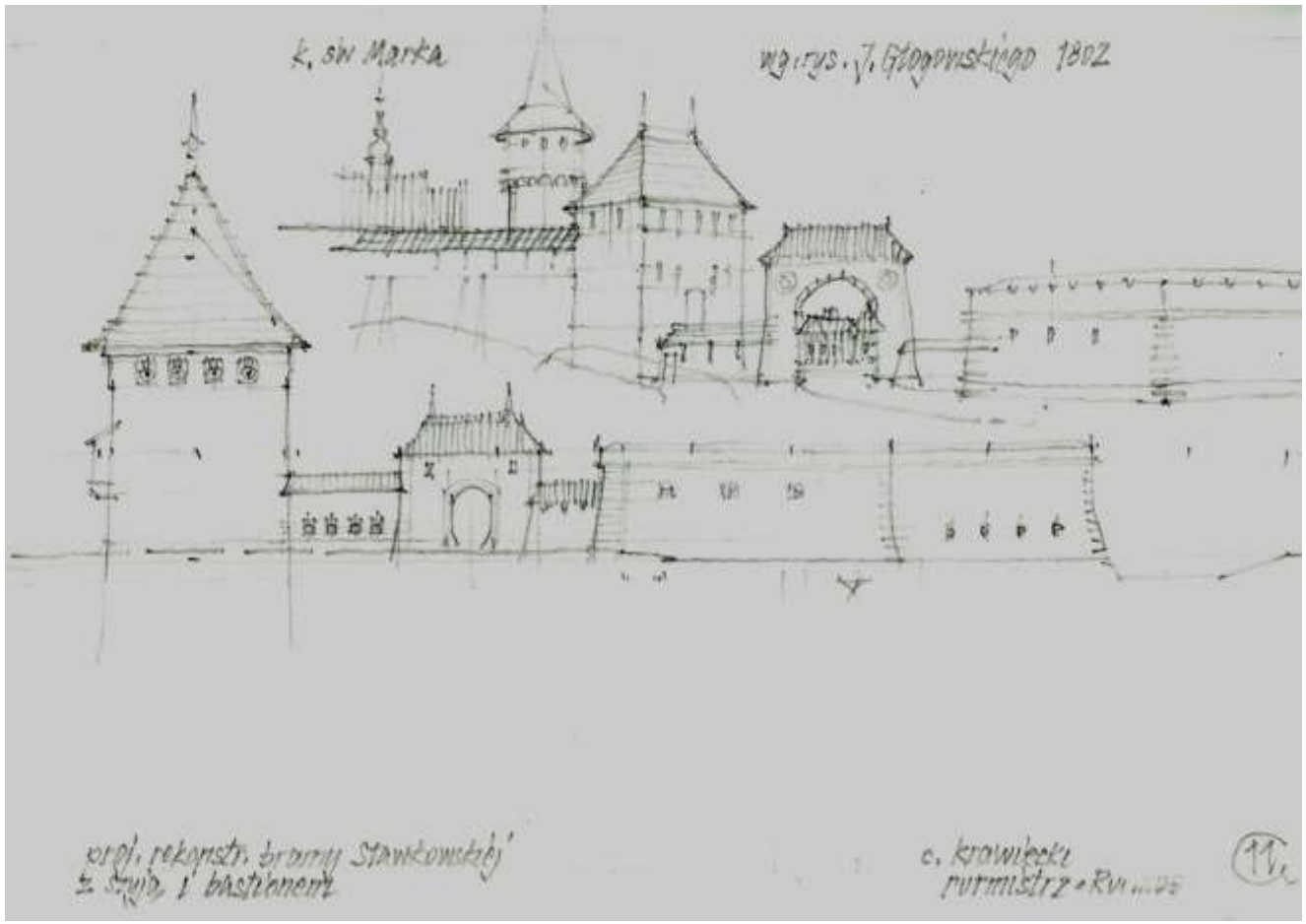


• wiatownia zespół bramny •
(Floriański)

(5)

k. św. Marka

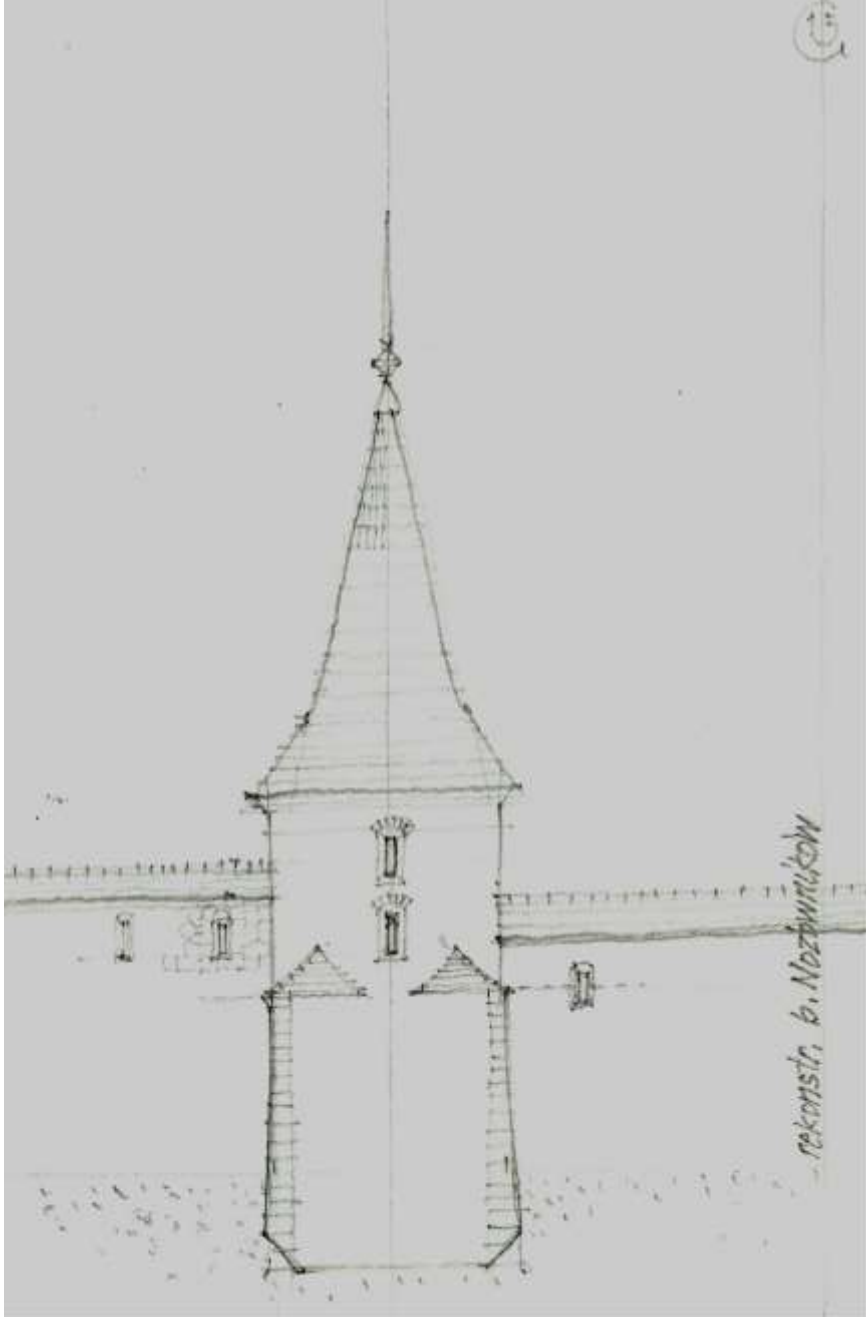
wz. rys. J. Głogowski 1802





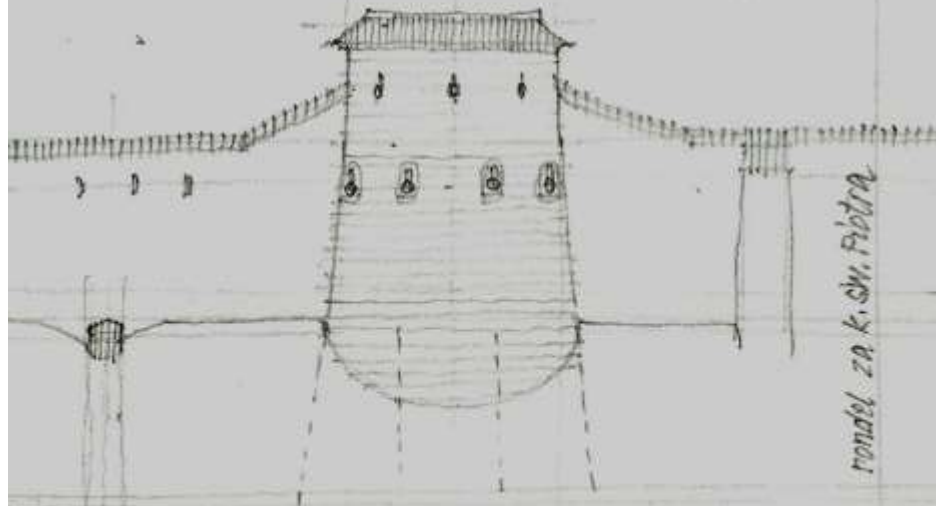
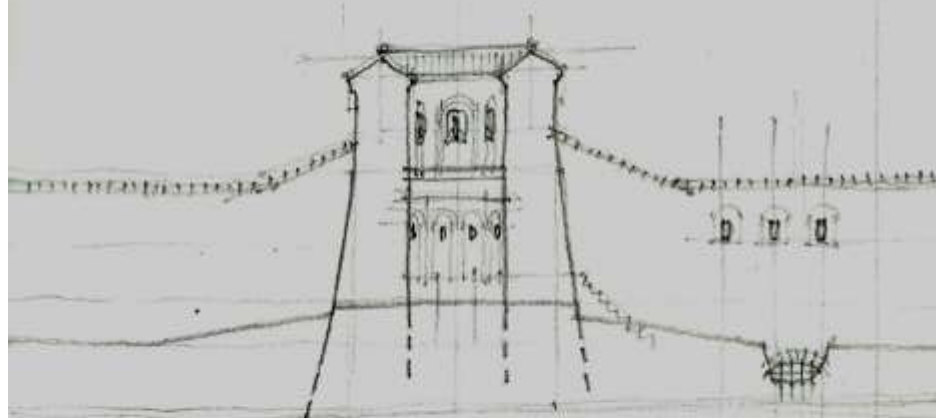
most ? belvard

12

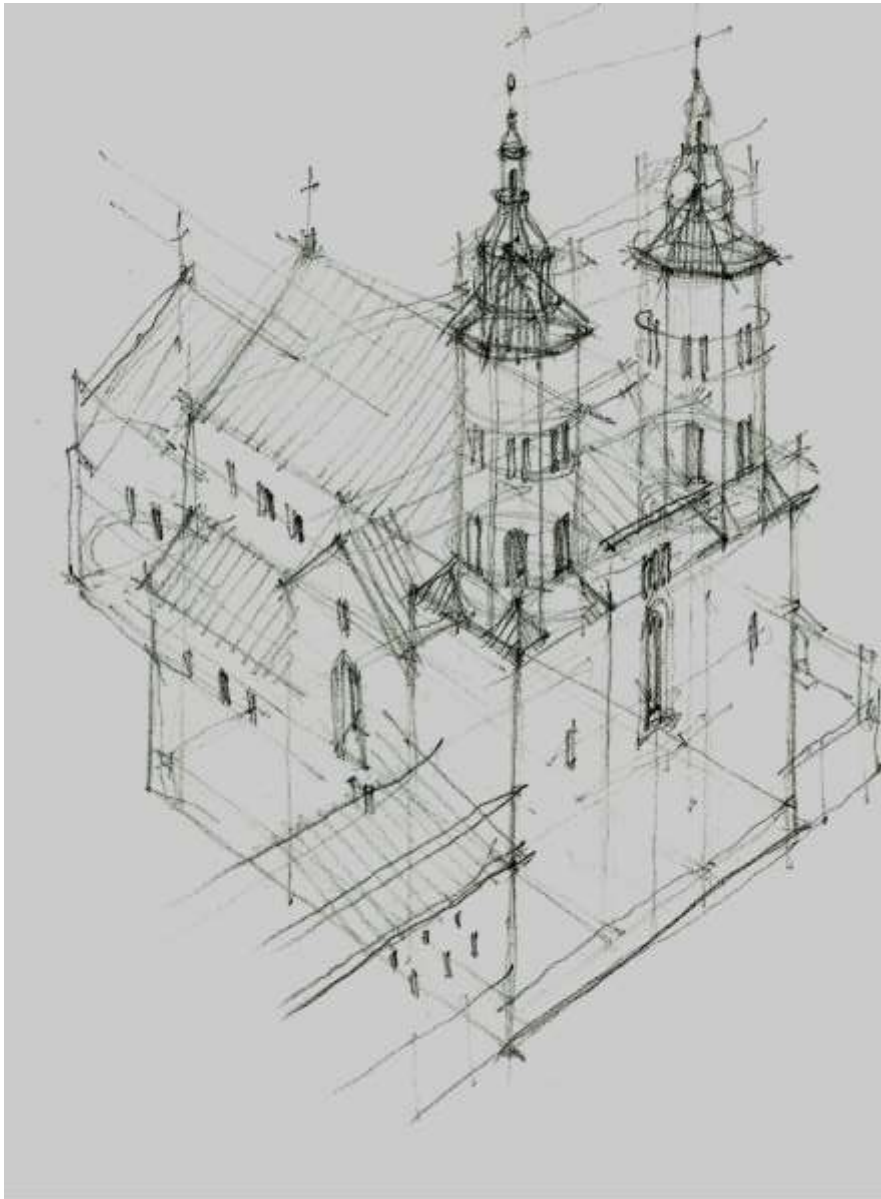


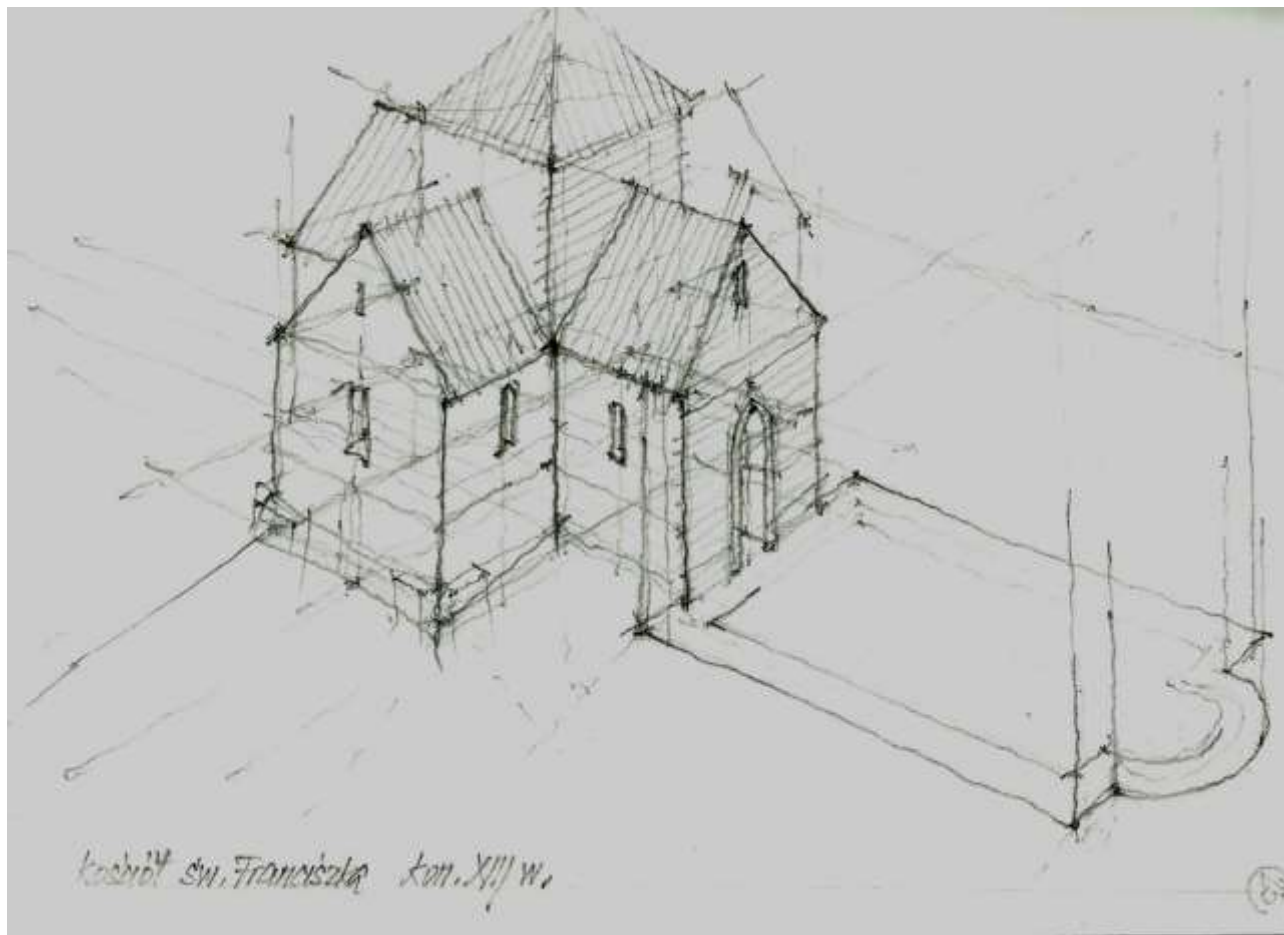
rekonstrukcja b. Nieszpilków

(H)



rondel za k. sv. Petra





Kościół św. Franciszka kon. XIII w.





Wieża kościoła św. Mikołaja Archaniela i św. Stanisława Biskupa
Klasztor pp. Paulinów Na Skotce

4



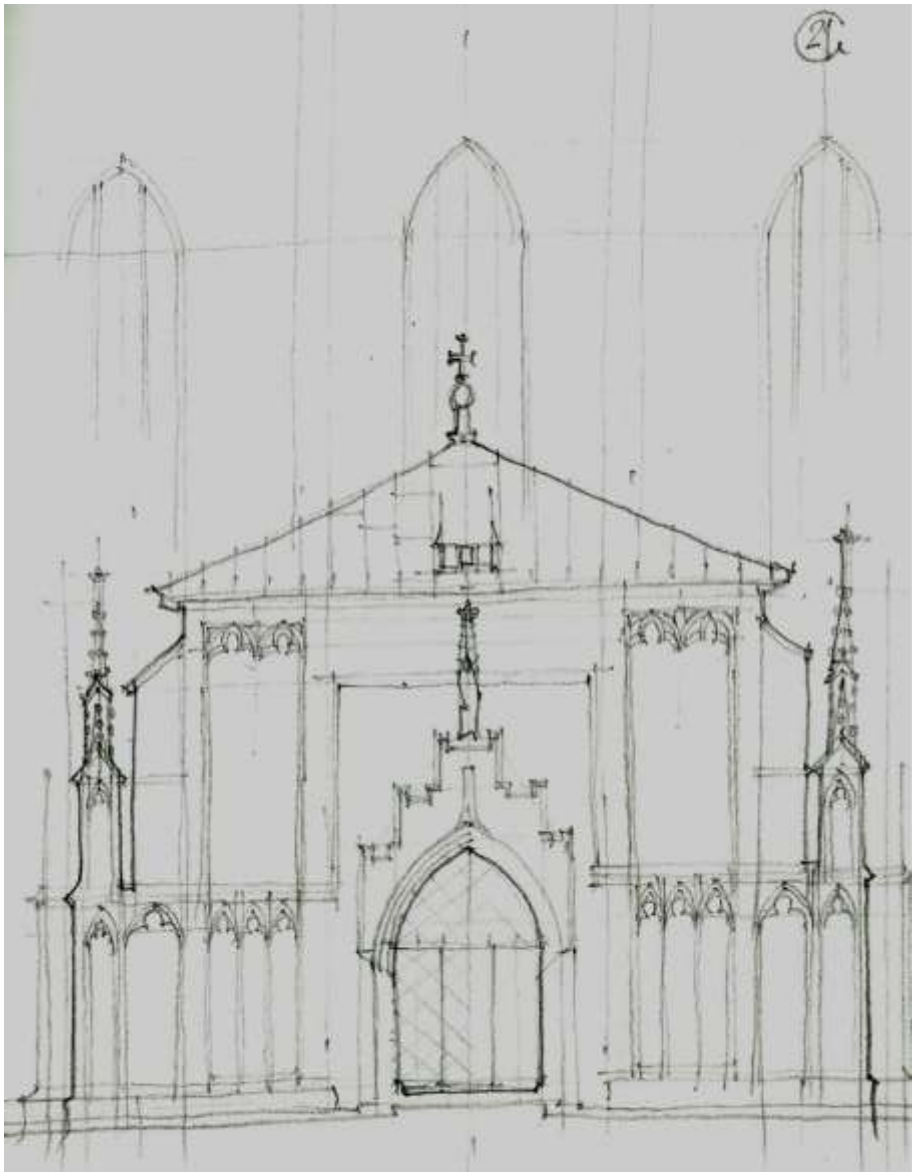
• wieża ratuszowa •

1

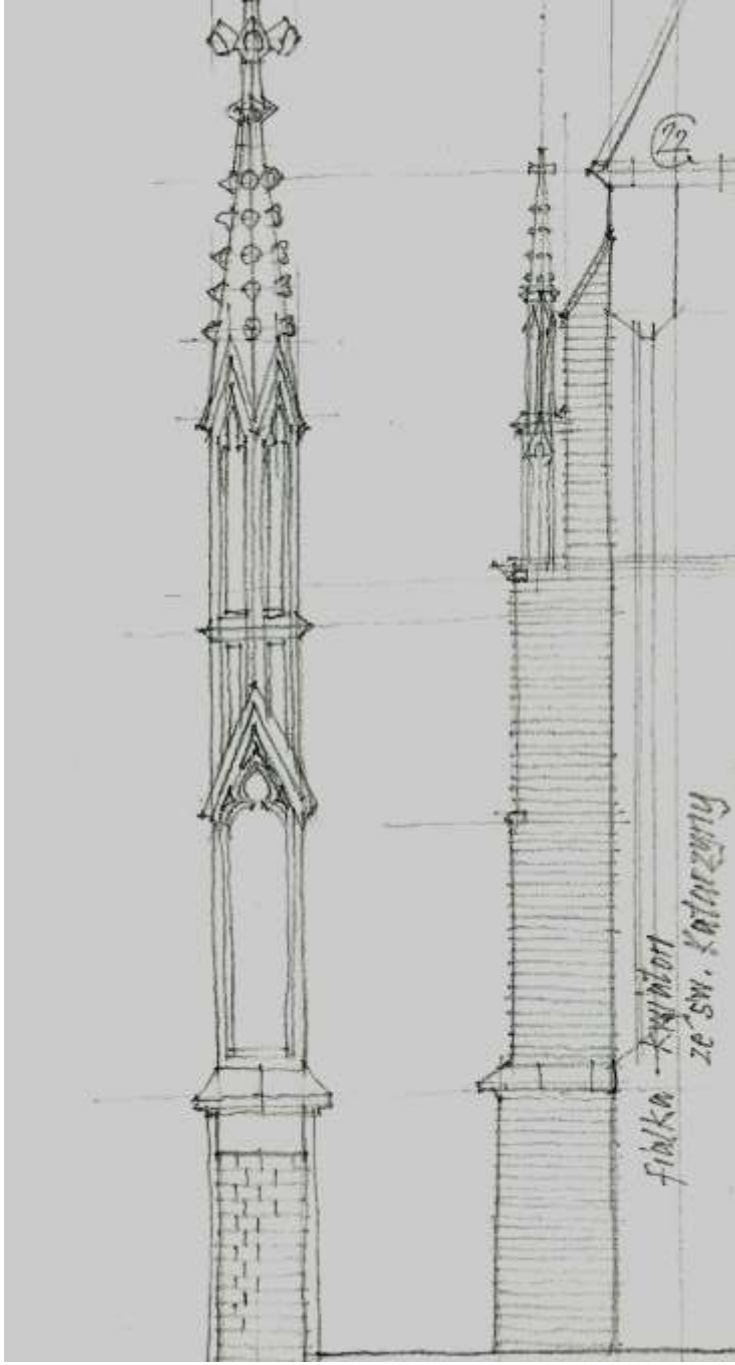


transept
"Frankenberg"

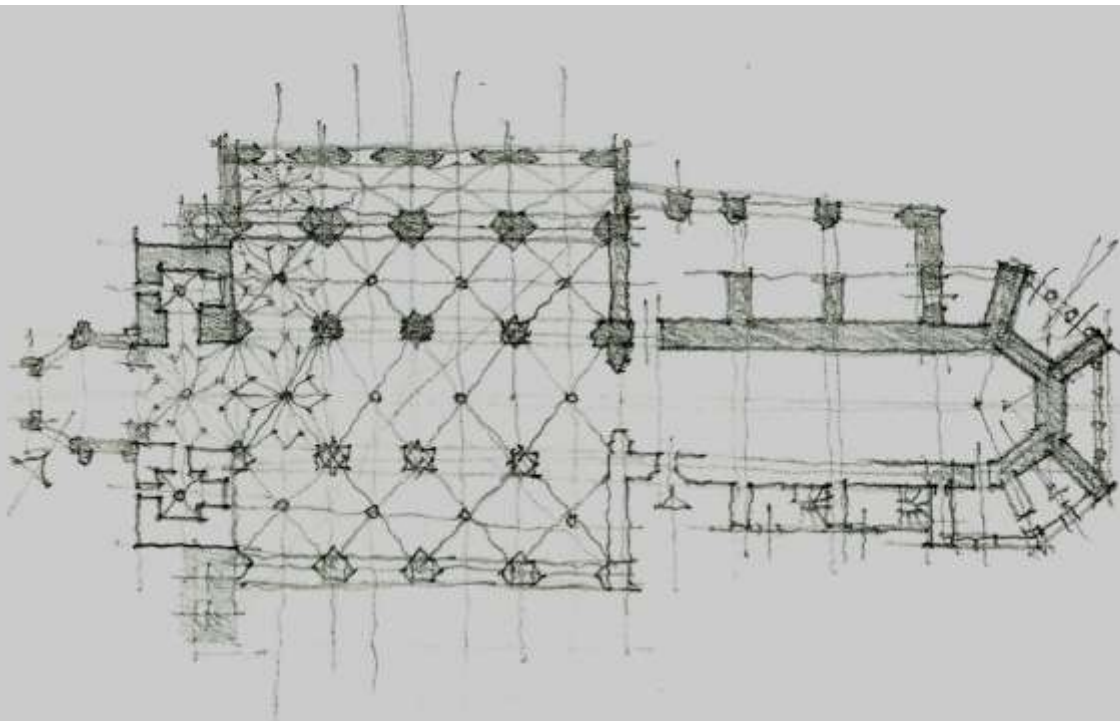
26



południowa kreszta kościoła św. Katarzyny

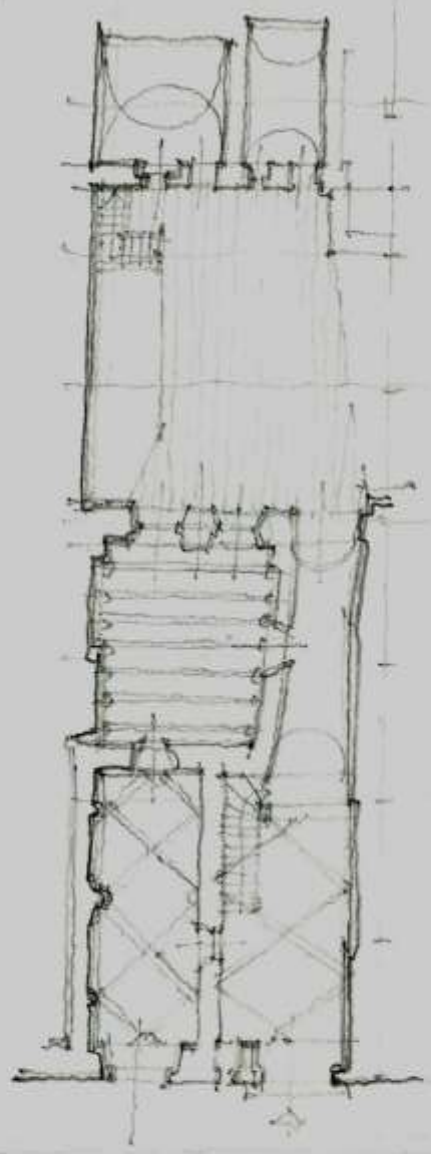


fiolka - krynica
ze sw. Katarzyny



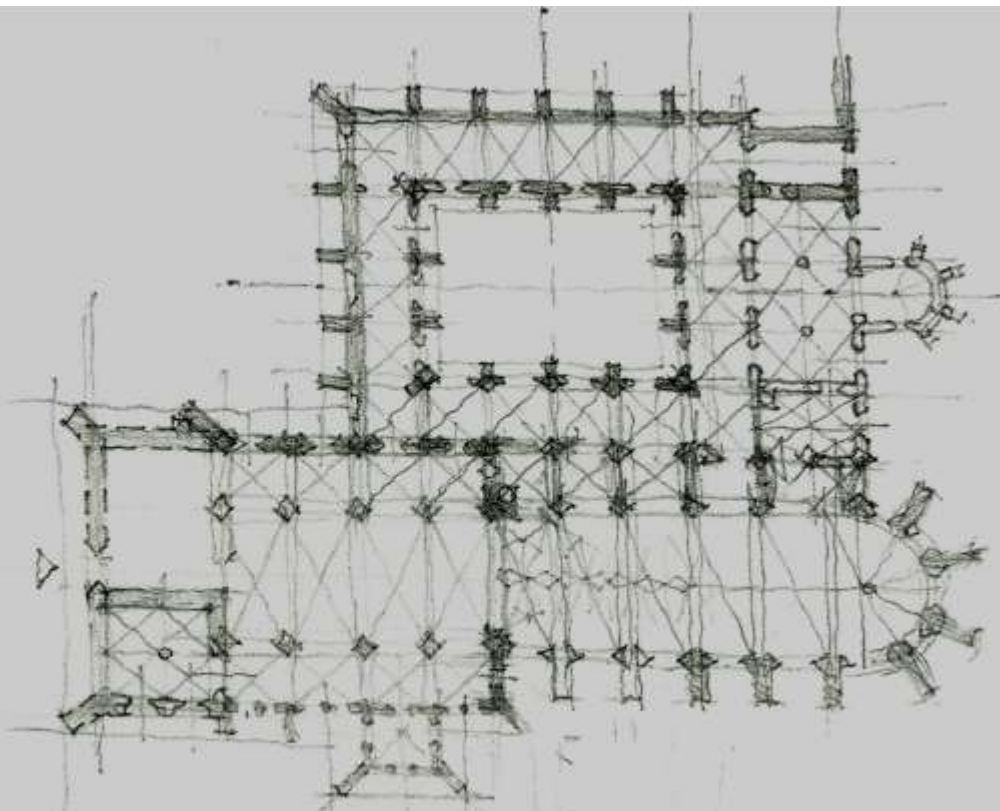
plan kosinota Mariborkega

126



reut. kamienicy ul. Stawkowska 7

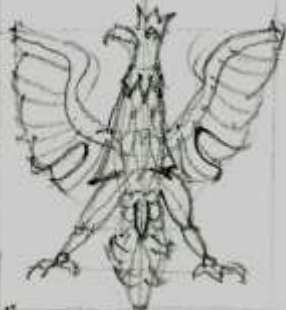




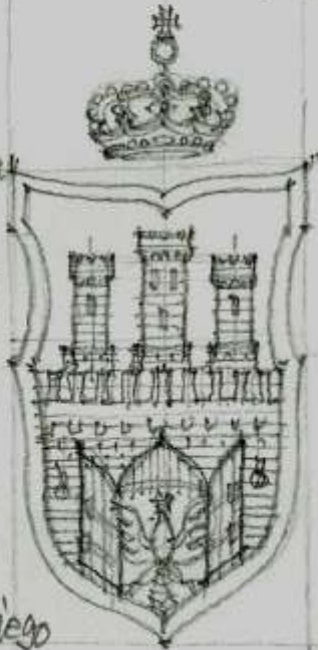
kościół św. Katarzyny i klasztor augustiański XIV i XV w.



Książa Bolesława



1570
Kazimierza Wielkiego



Wład. Jagielly
1434

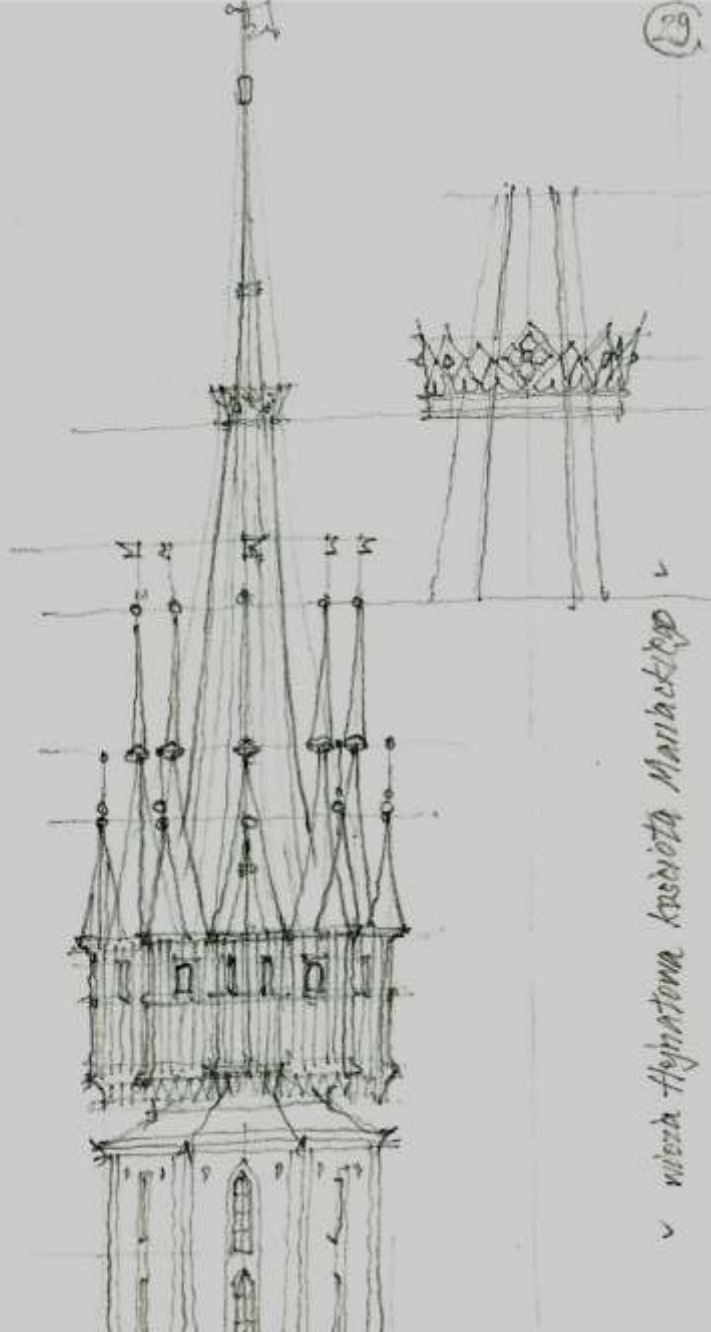


Zygmunta Augusta
1548



1673
Jana II Sobieskiego

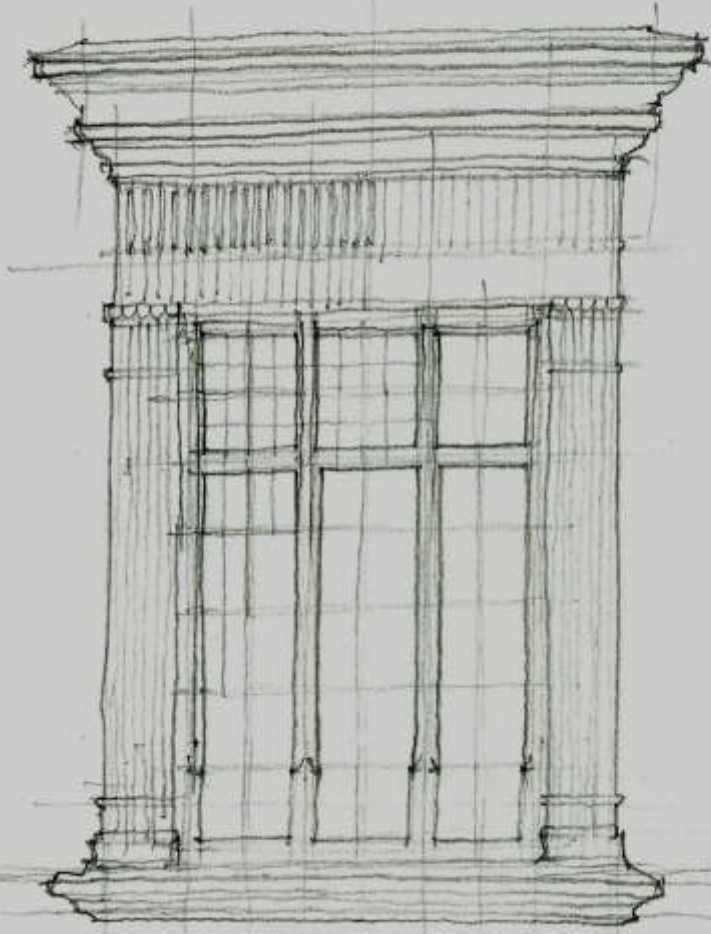
herb miasta królewskiego Krakowa



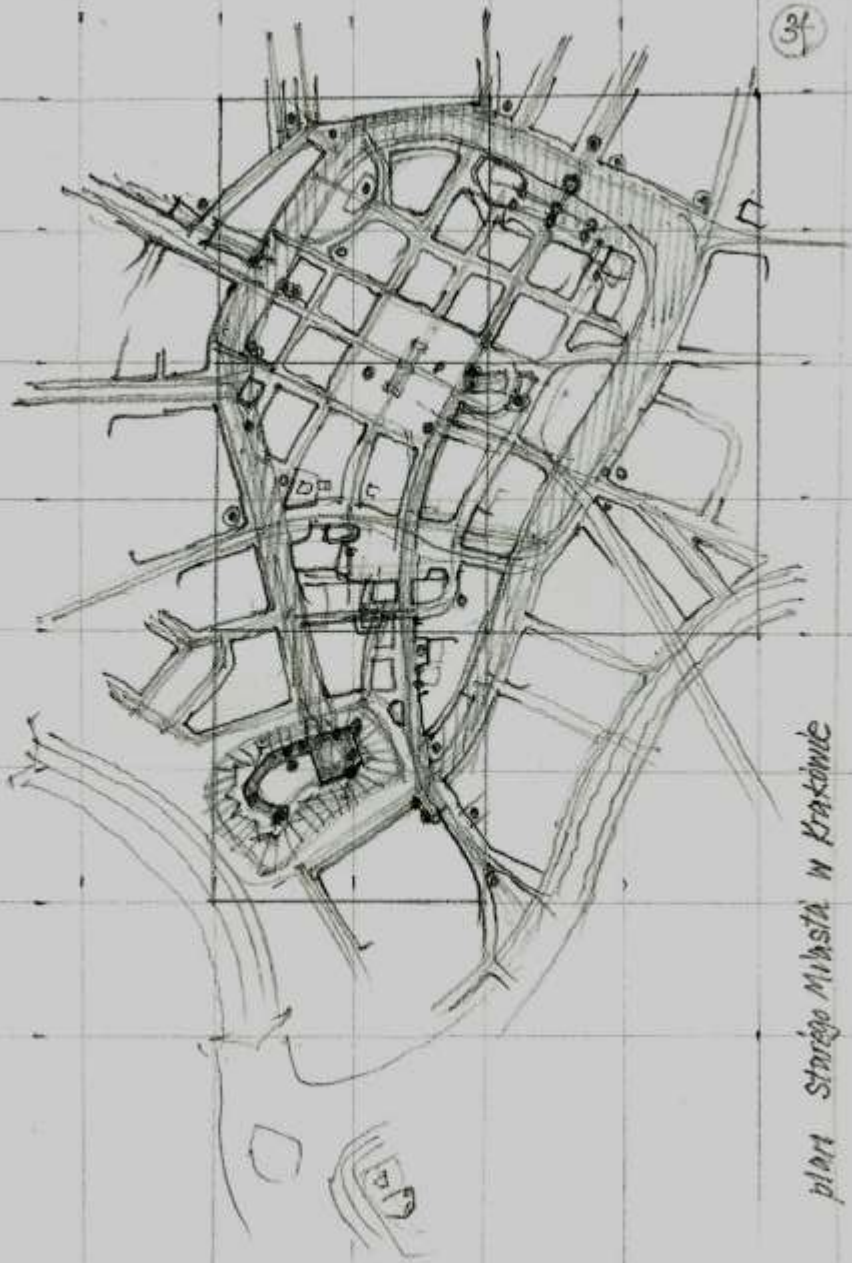
v wieża i wieżyczka kościoła Mariackiego v

32

obramienie okna w Zamku Krolewskim
na Wawelu 1530 r

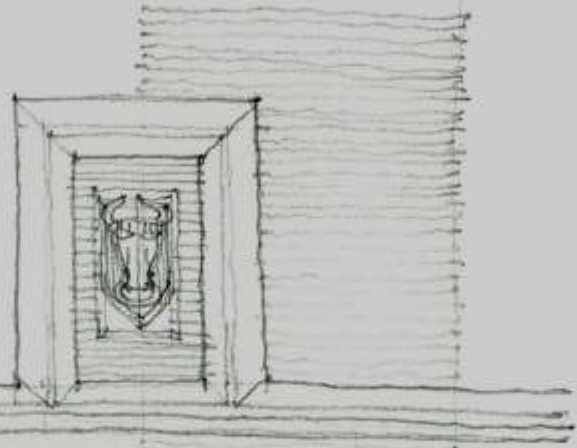
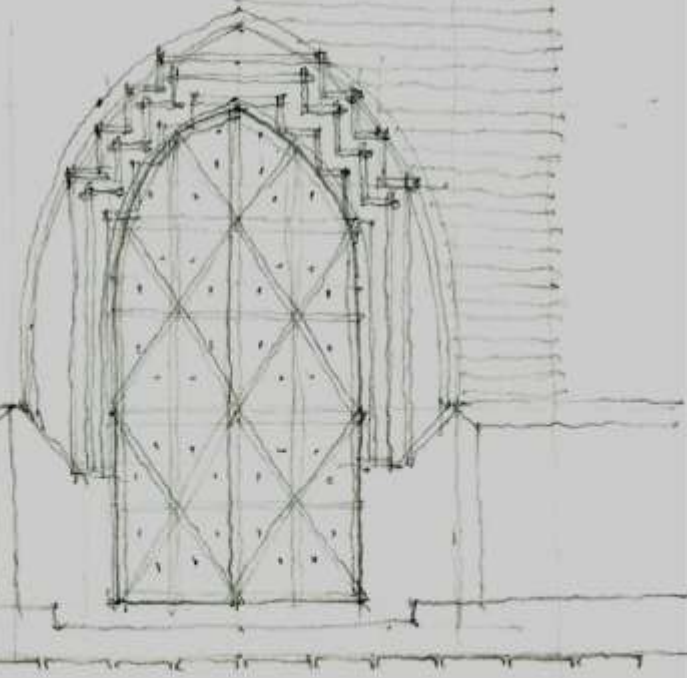


3f



plan Starego Miasta w Krakowie

„Здание в стиле классицизма в Казани“
„Здание в стиле классицизма в Казани“



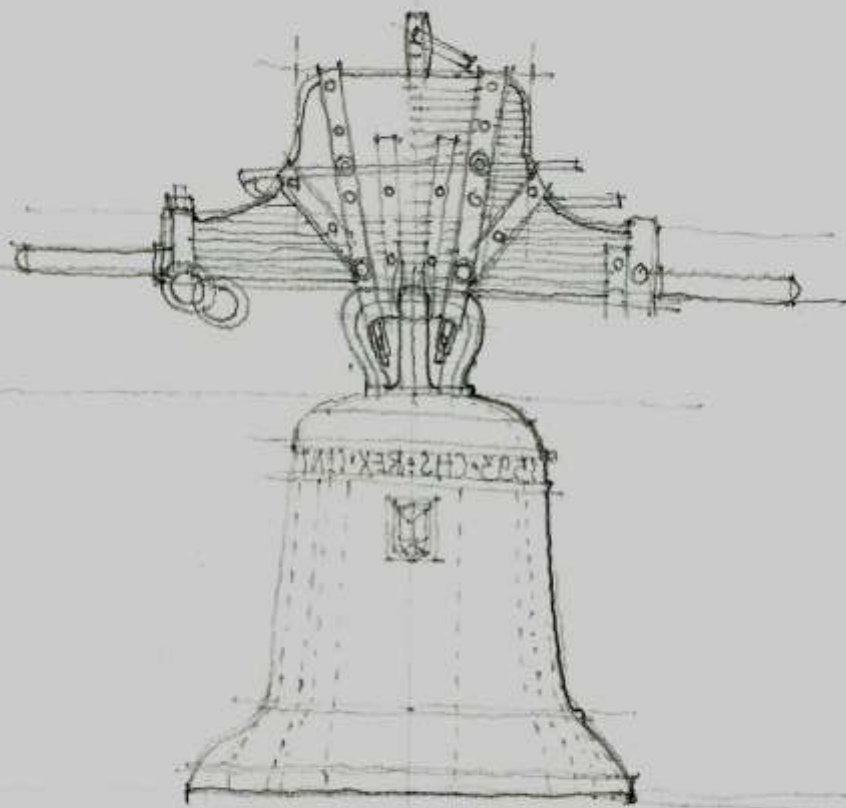


Wieża Zegarowa na Kwadrat





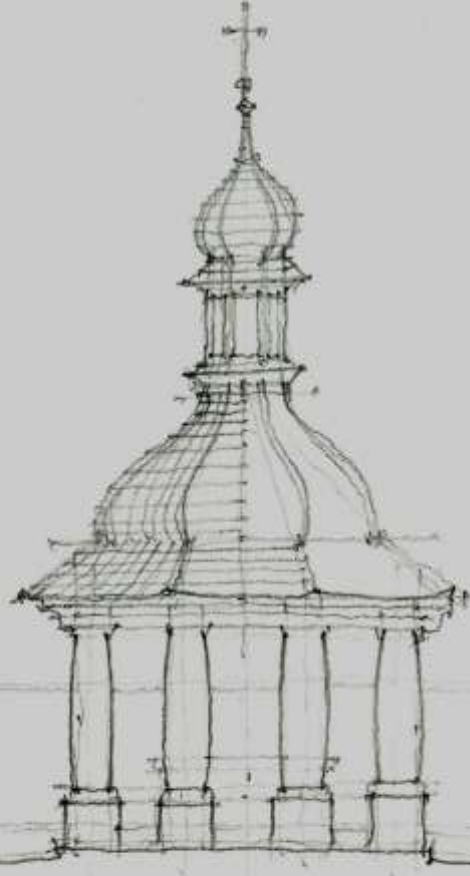
portal wejściowy do kolegiaty
św. Anny



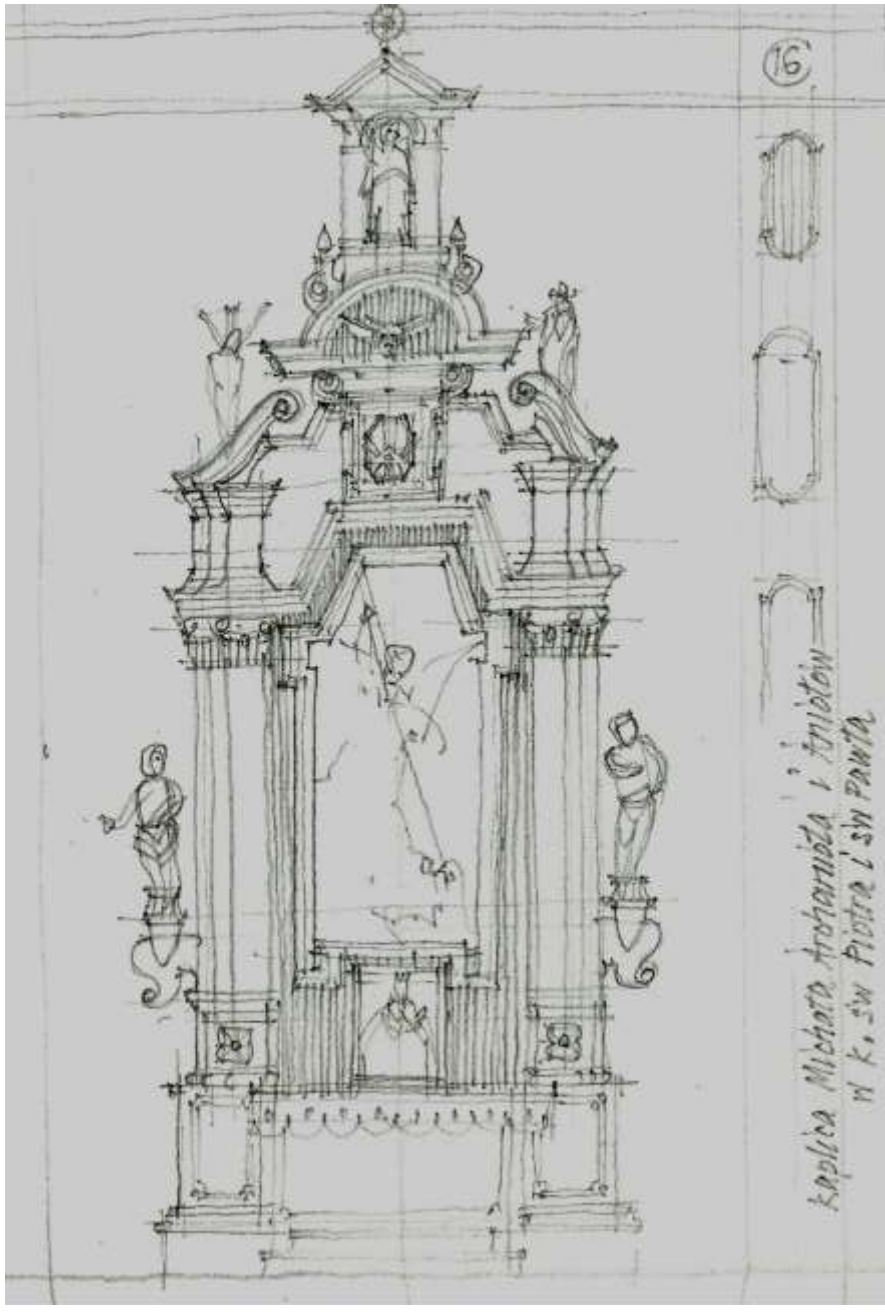
dział w 1902 w formie 5-tytu



kościół w zespole kościelnym w Rudawie 1783



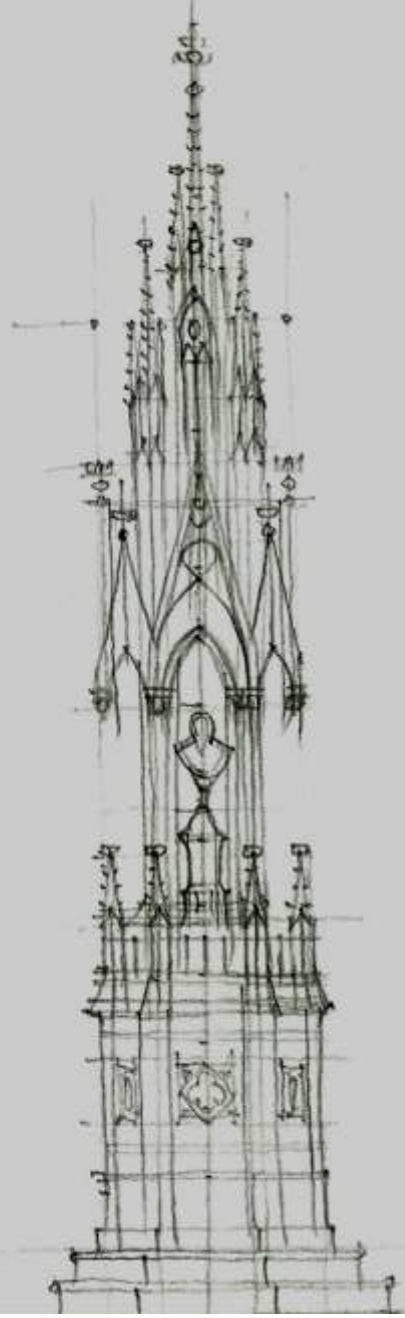
skocznia klasztorna w Czermnej, 1644-51



16

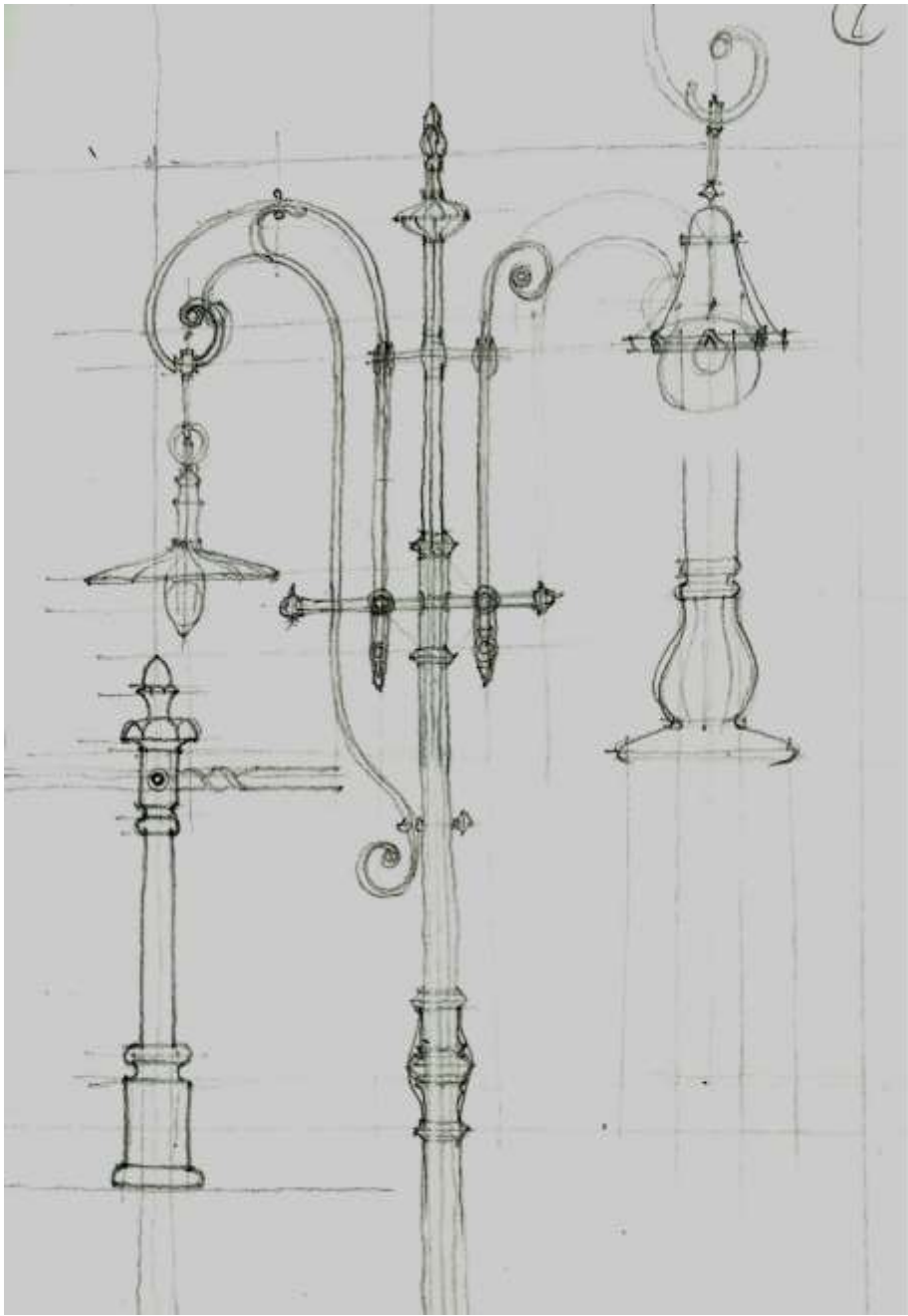


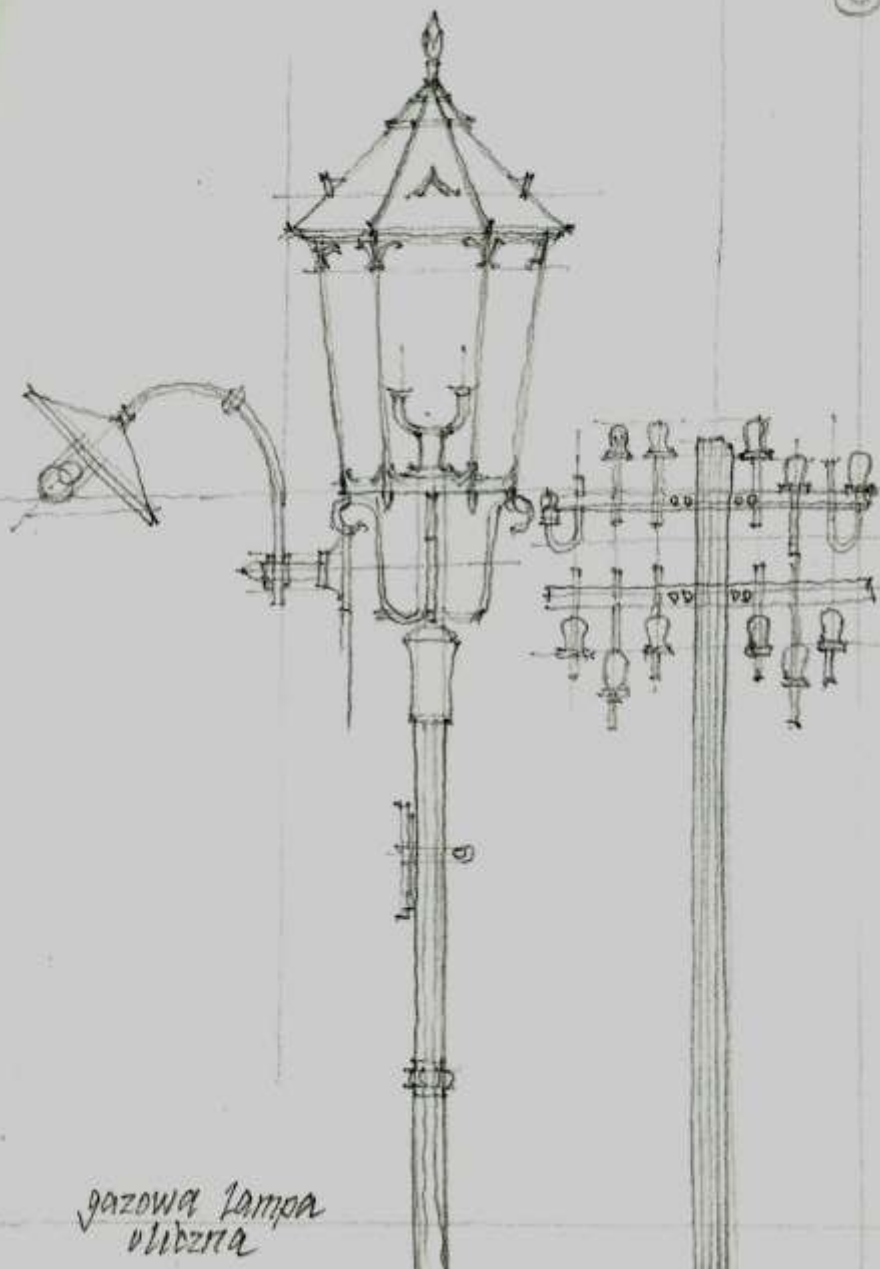
Kaplica Michoła Archanioła i Aniołów
w k. św. Piotra i św. Pawła



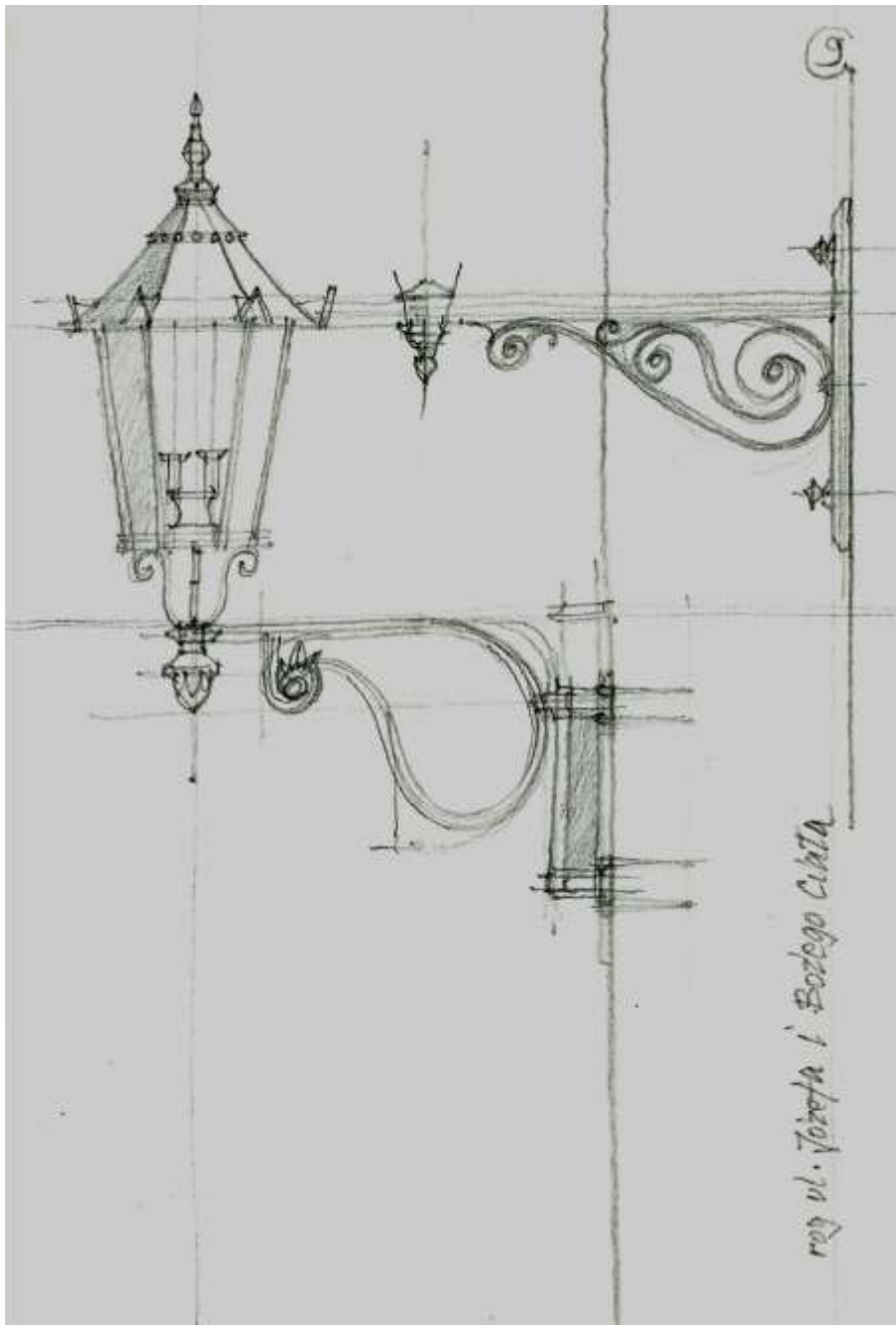
pomnik z popielcem Tadeusza Rejtana
pl. Asnyka

(10)





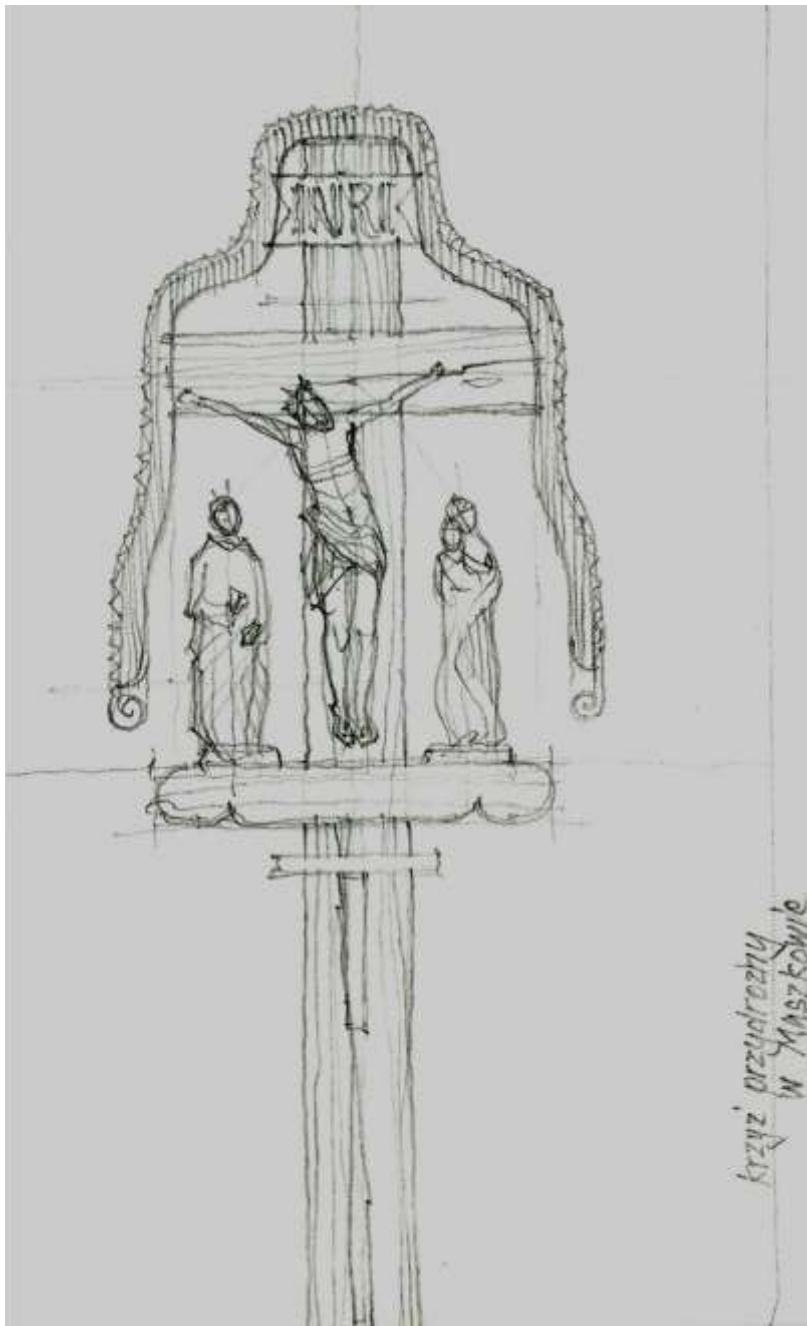
gazowa lampa
widzina



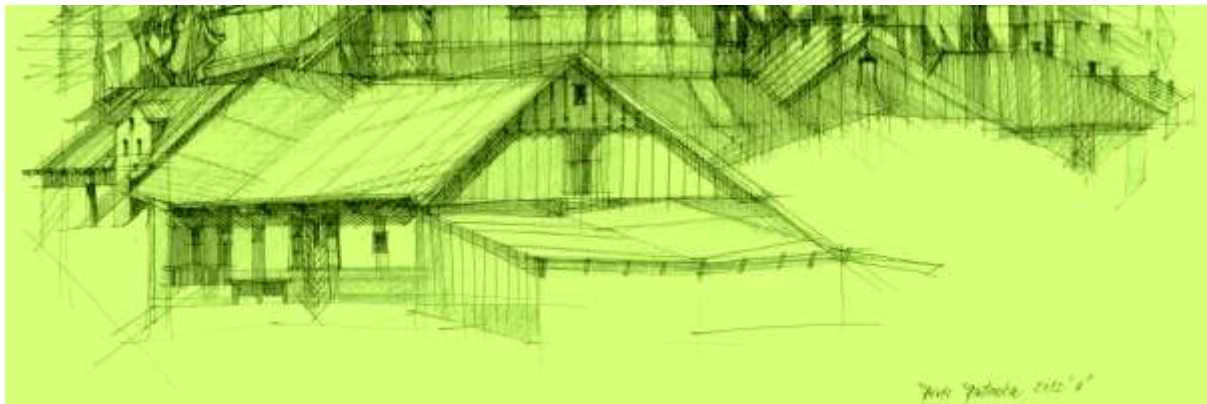
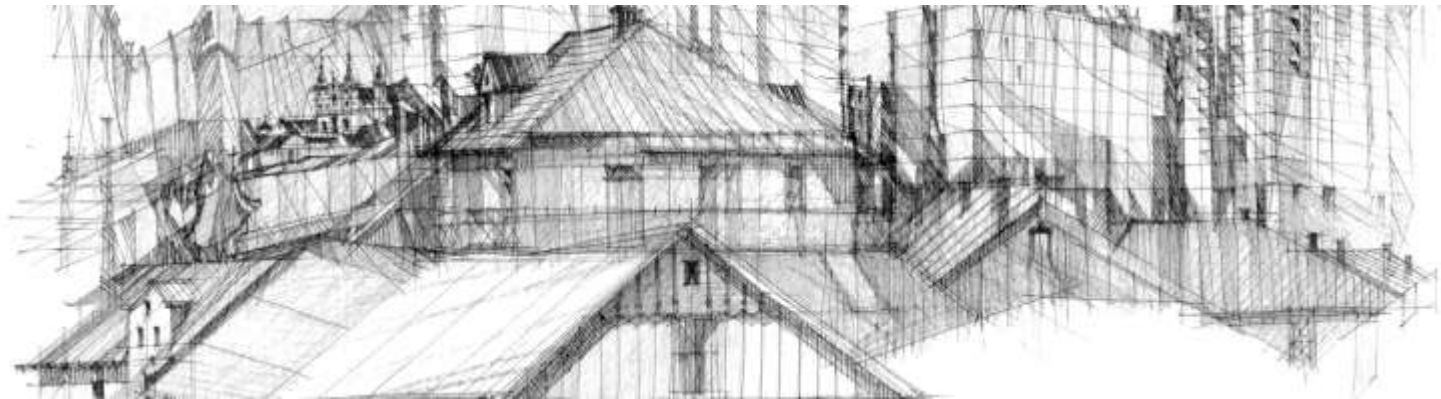
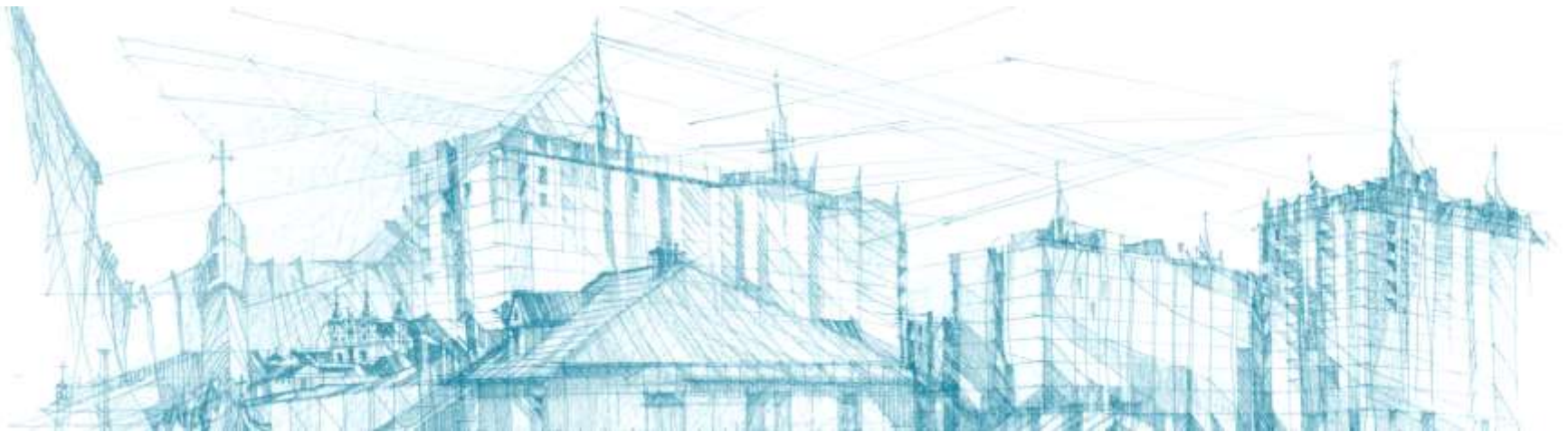
roz ul. Jozefa i Bozego Ciata

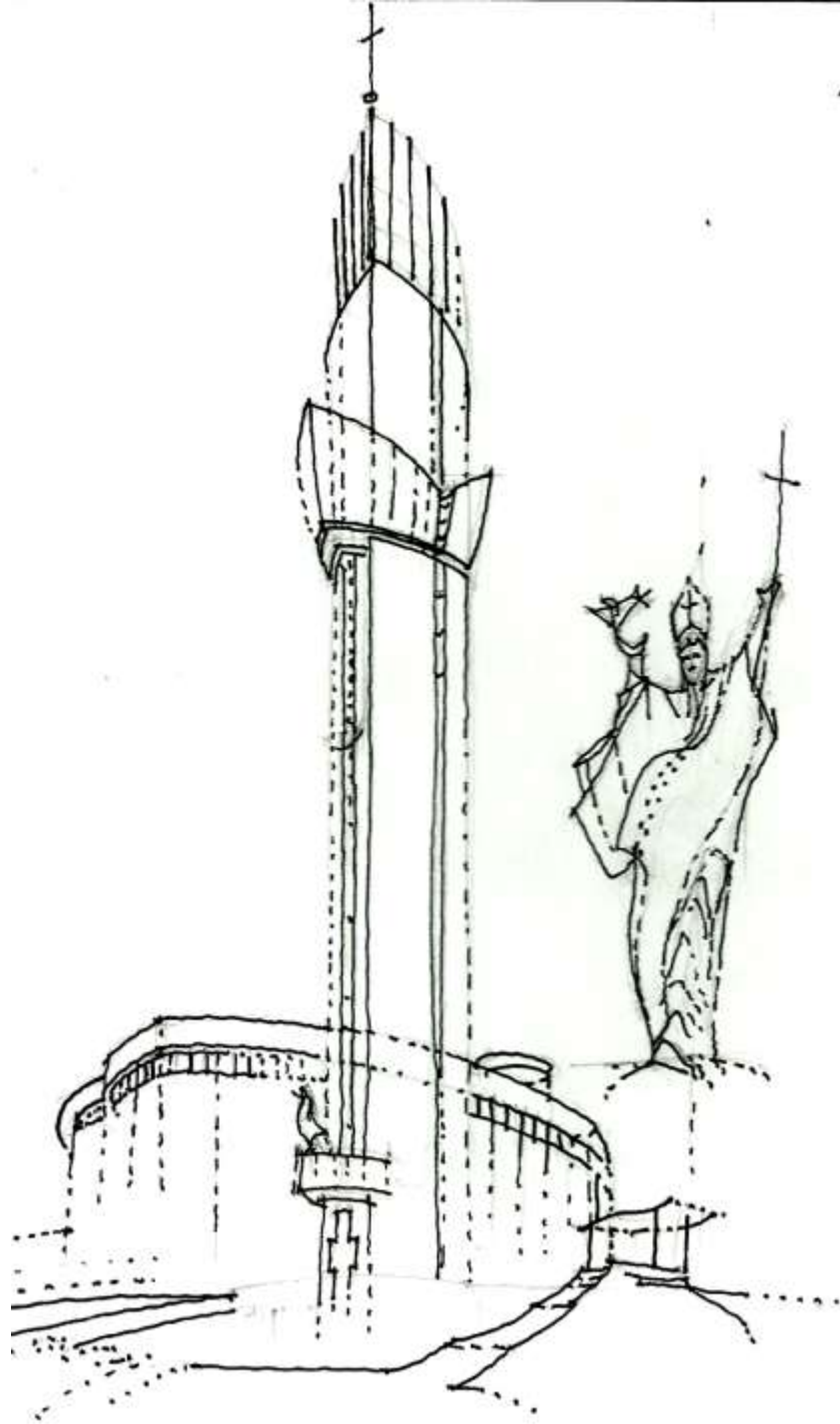


"Boża Męka" w 1650
Pierzotkowice - Dębnik

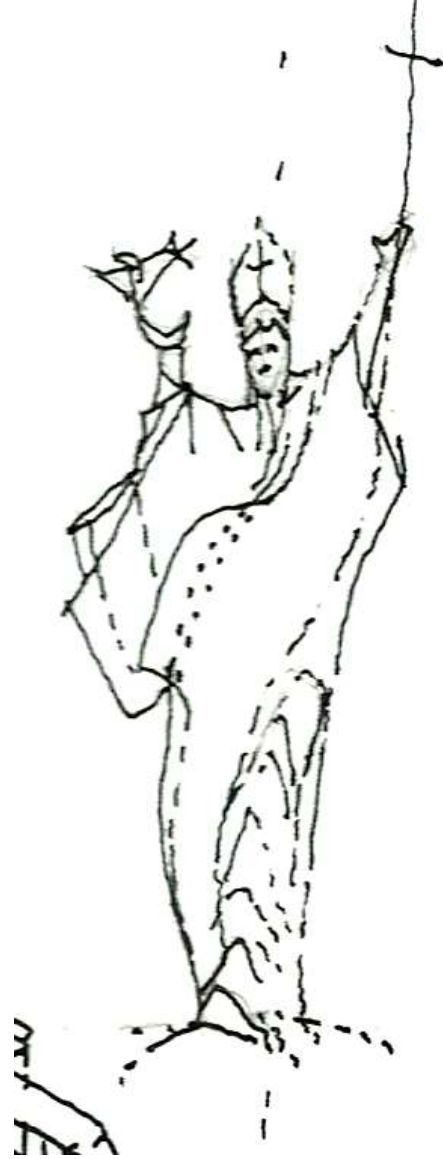


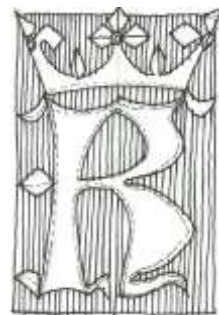
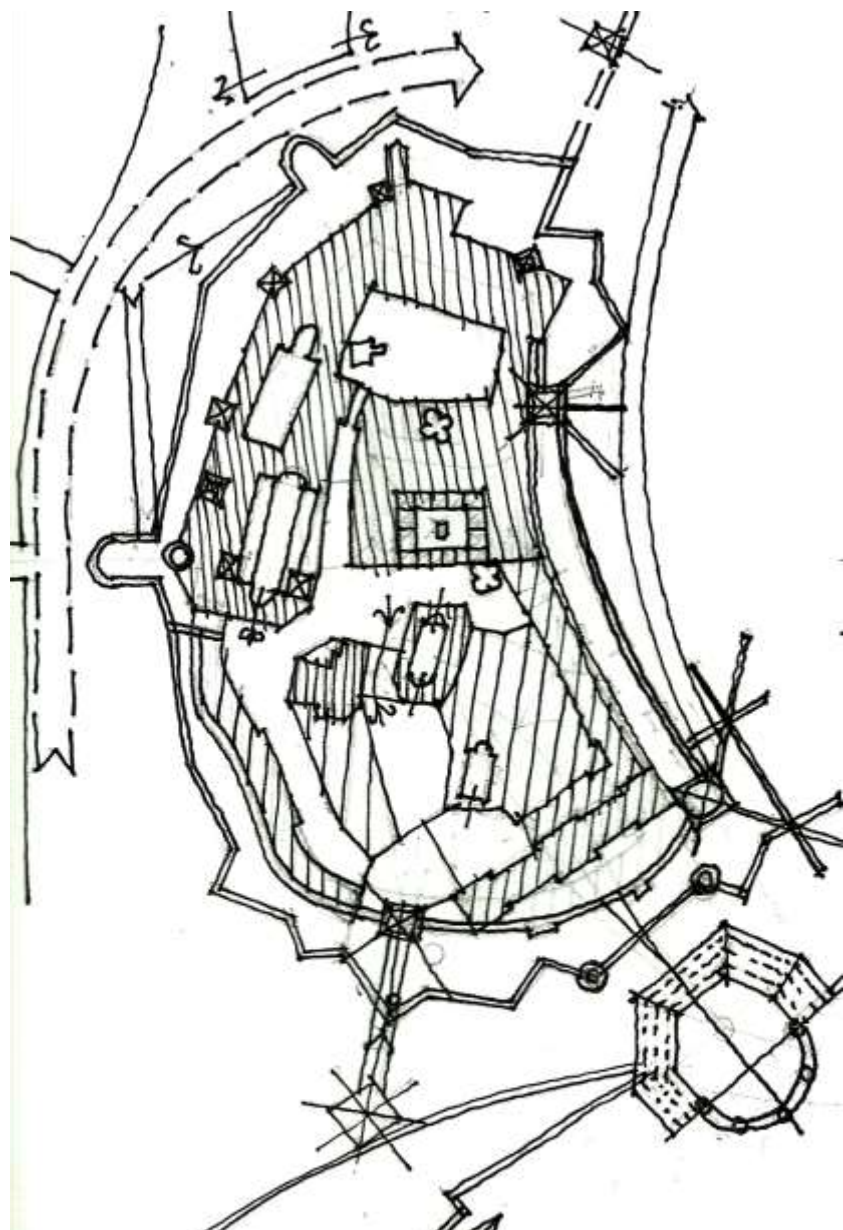
krzyż przedrożny
w Maszkowie



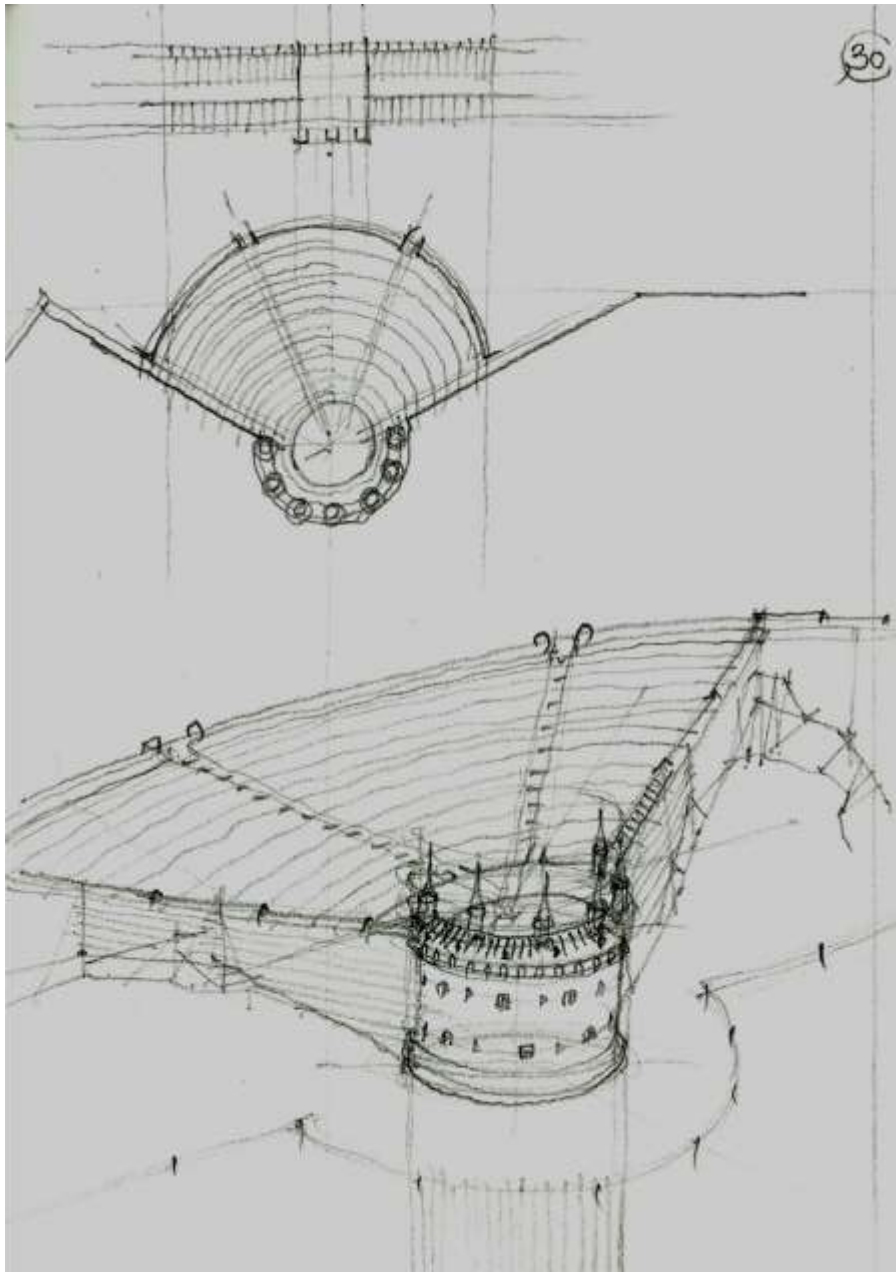


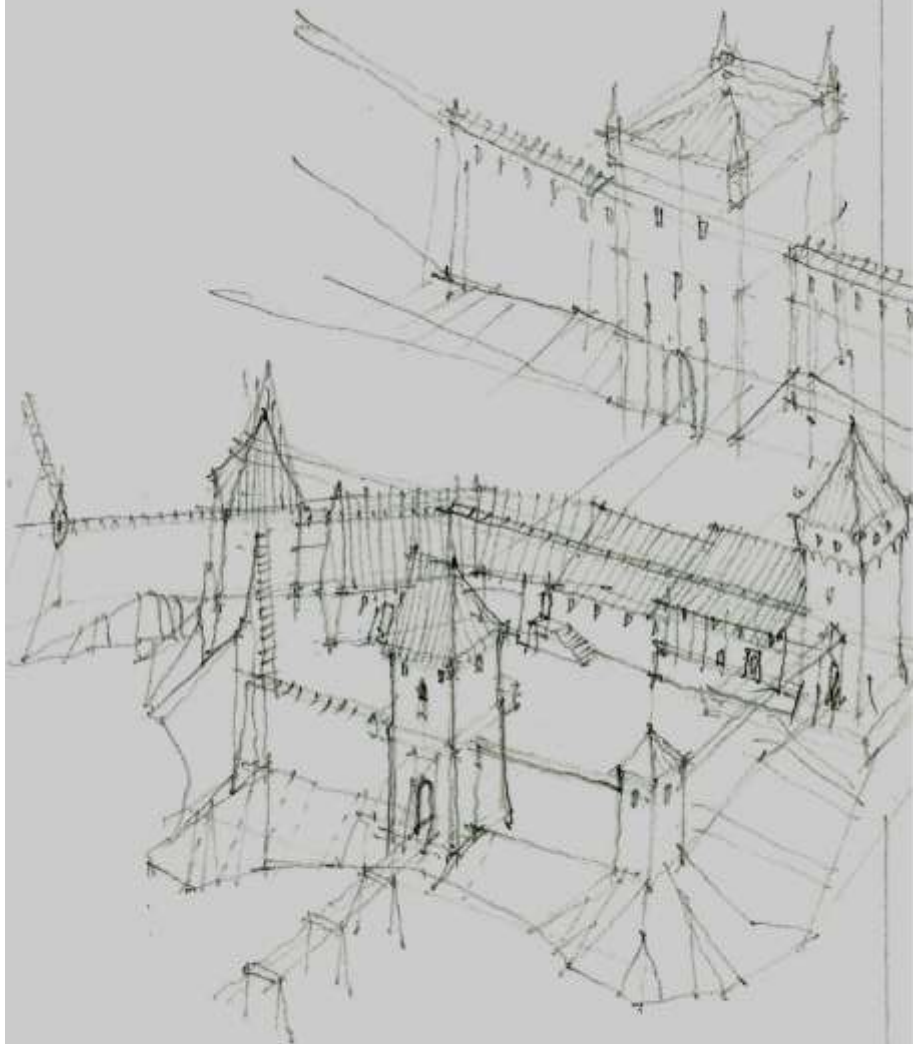
- Sanktuarium Miłosierdzia Bożego na tagiewnikach -



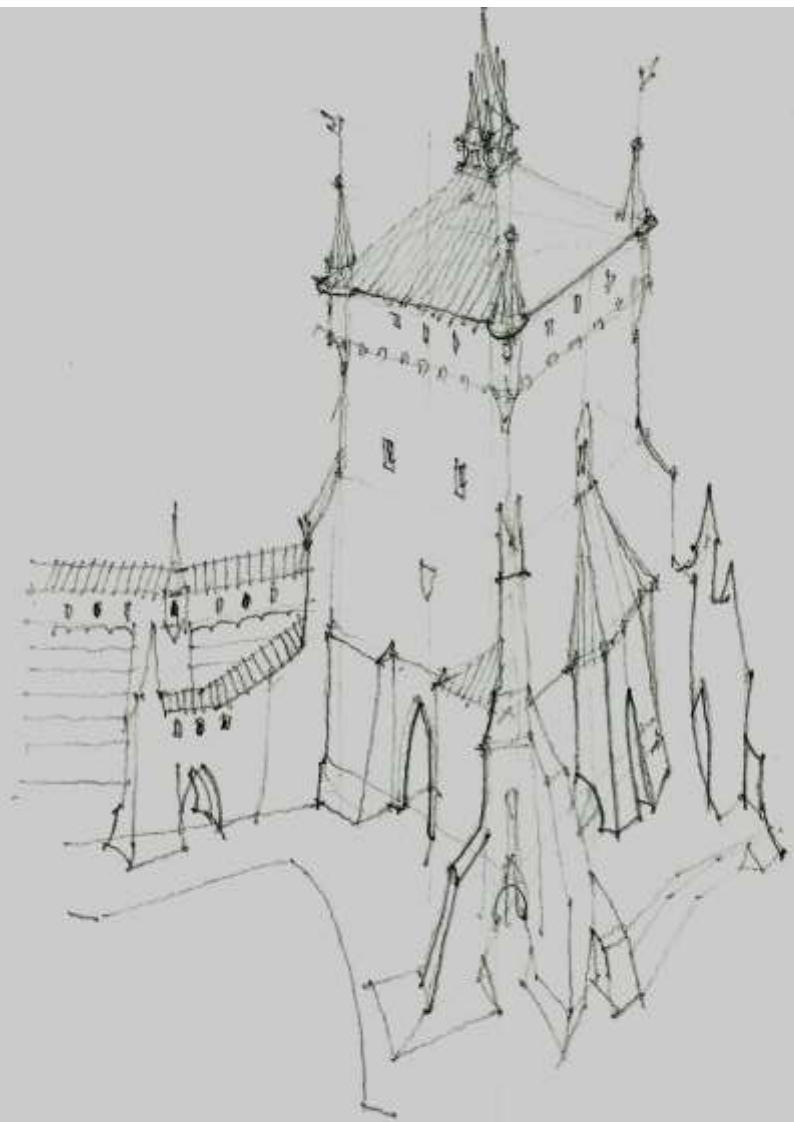


fantazje wawelskie : dansker, teatr, przystanek w. smok, brama Grodzka, dolny zamek



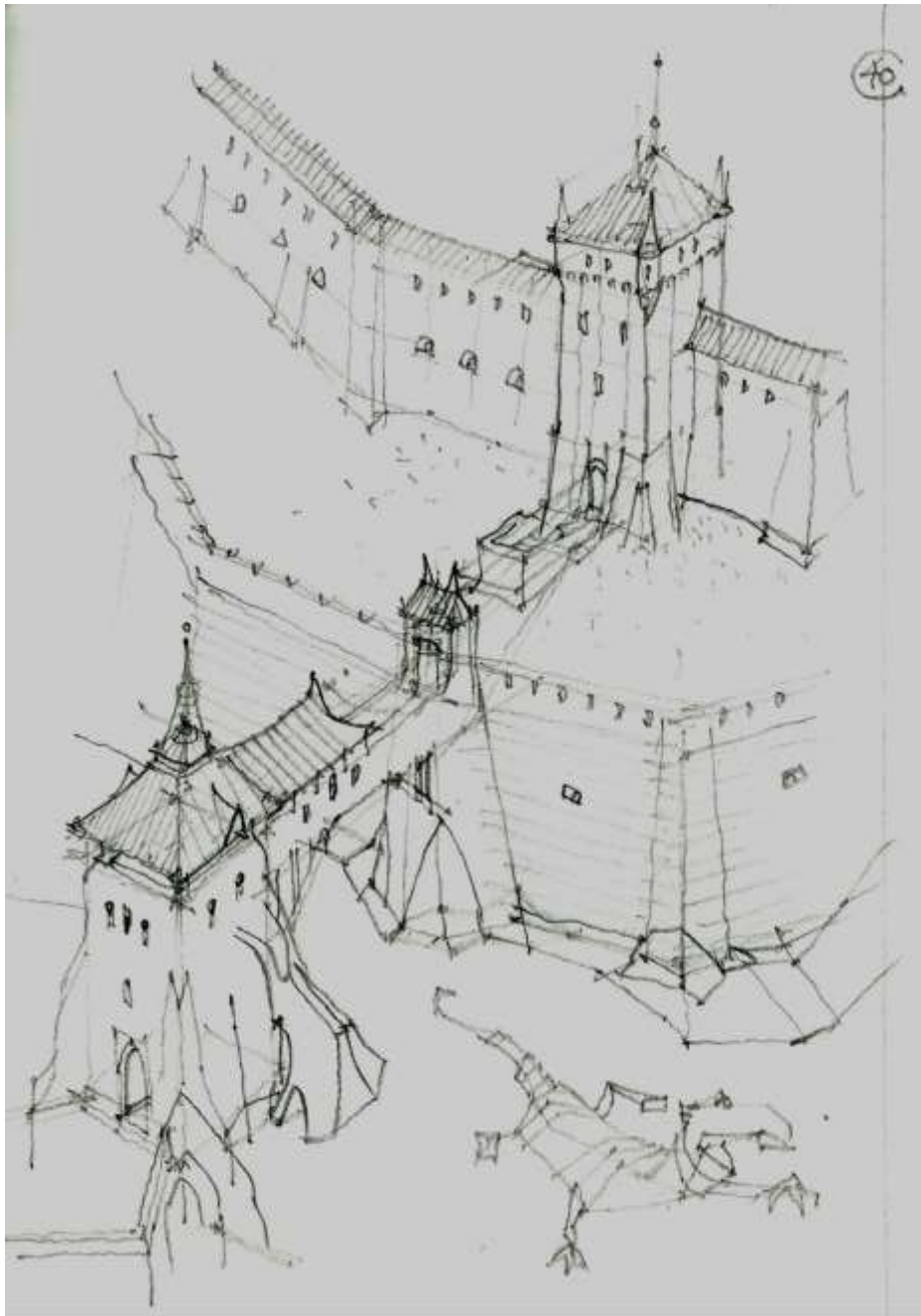


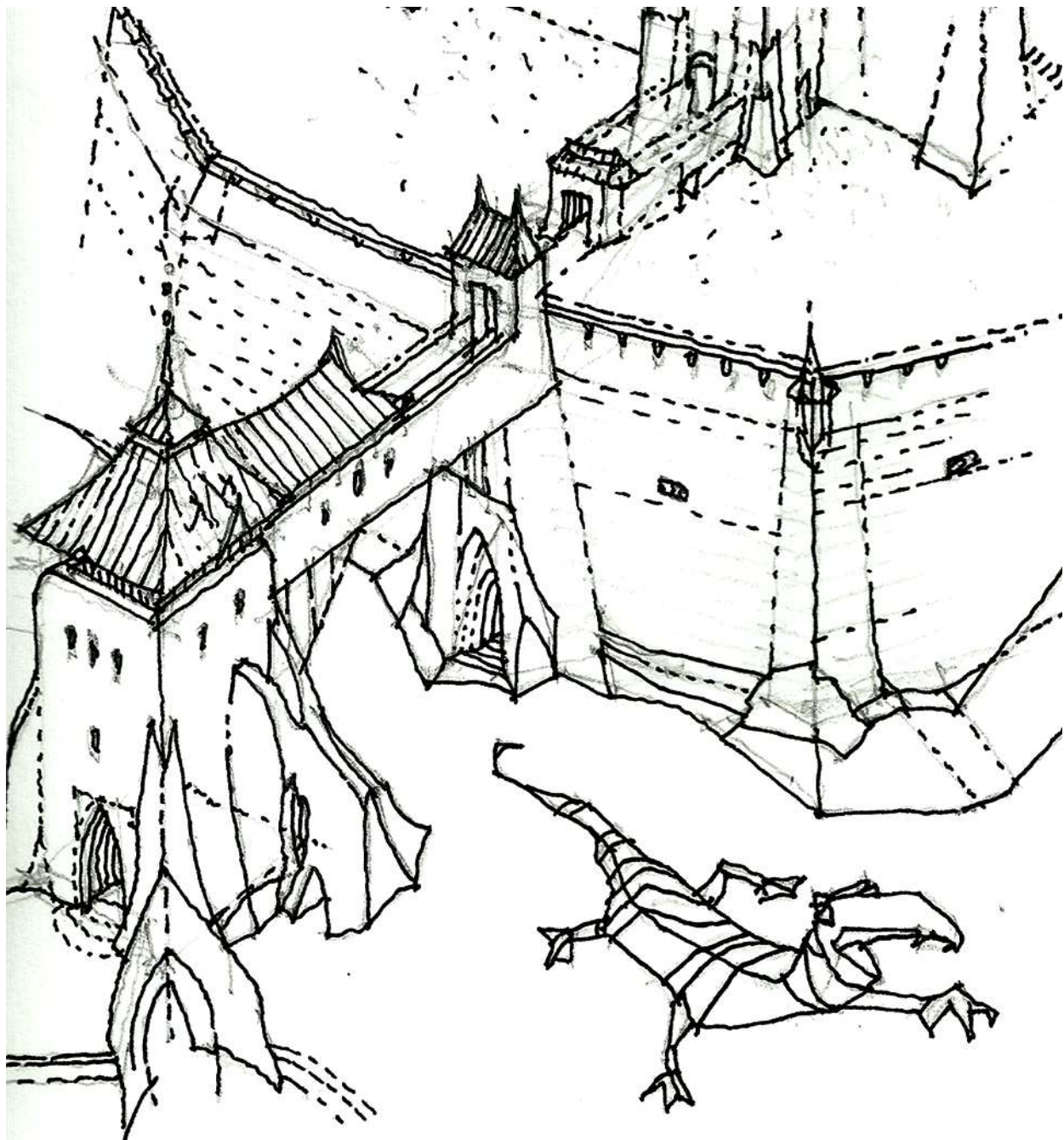
"grind stedtz"

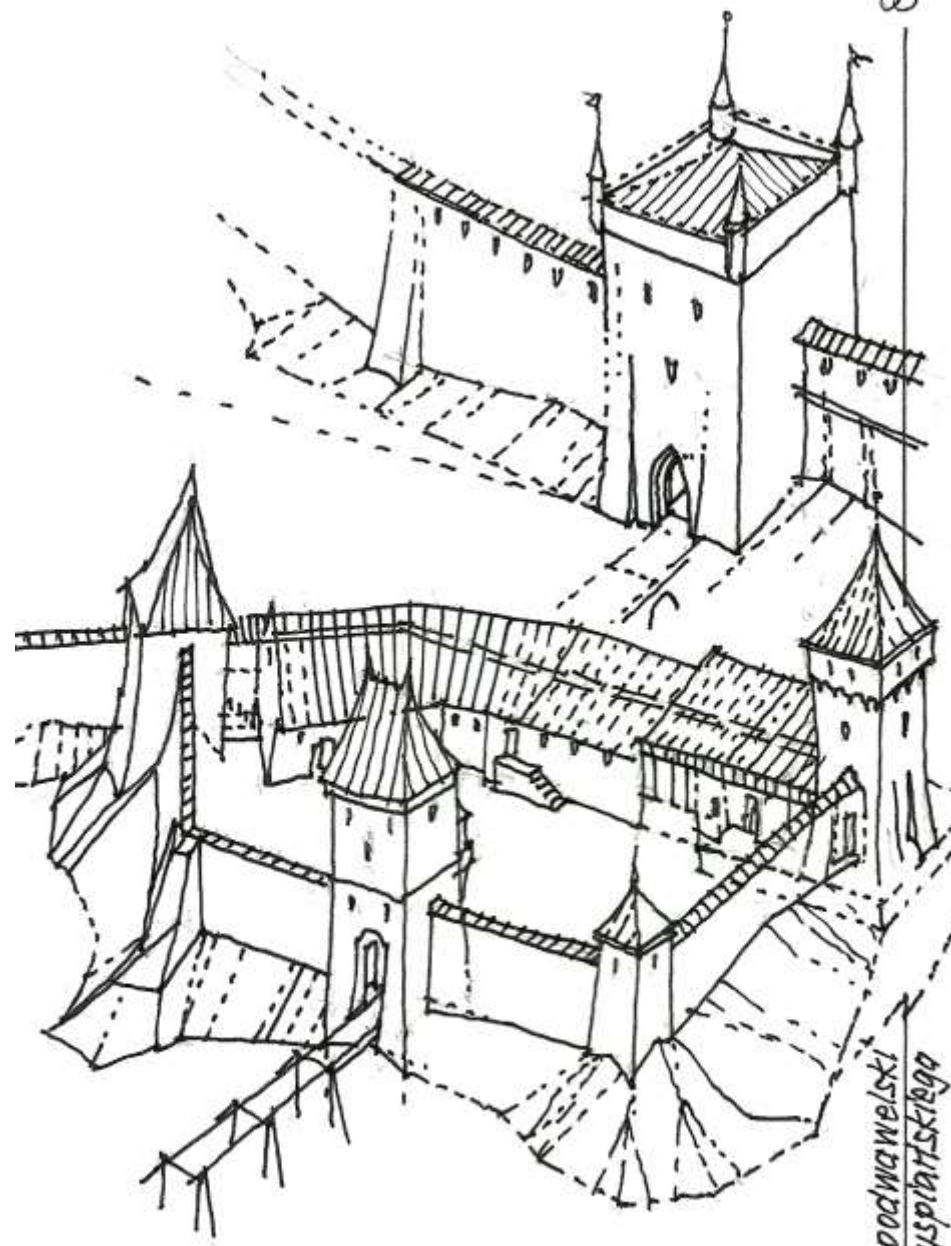
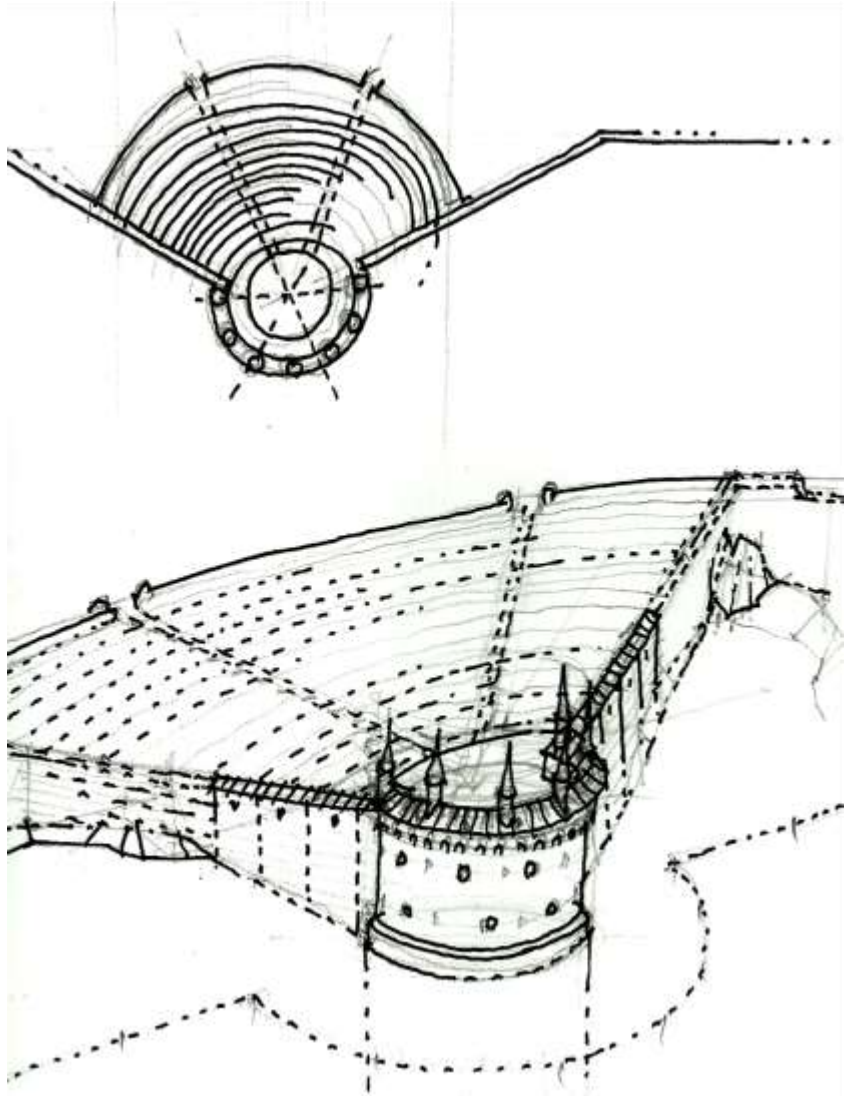


39

przebudowa baszty Santomińskiej

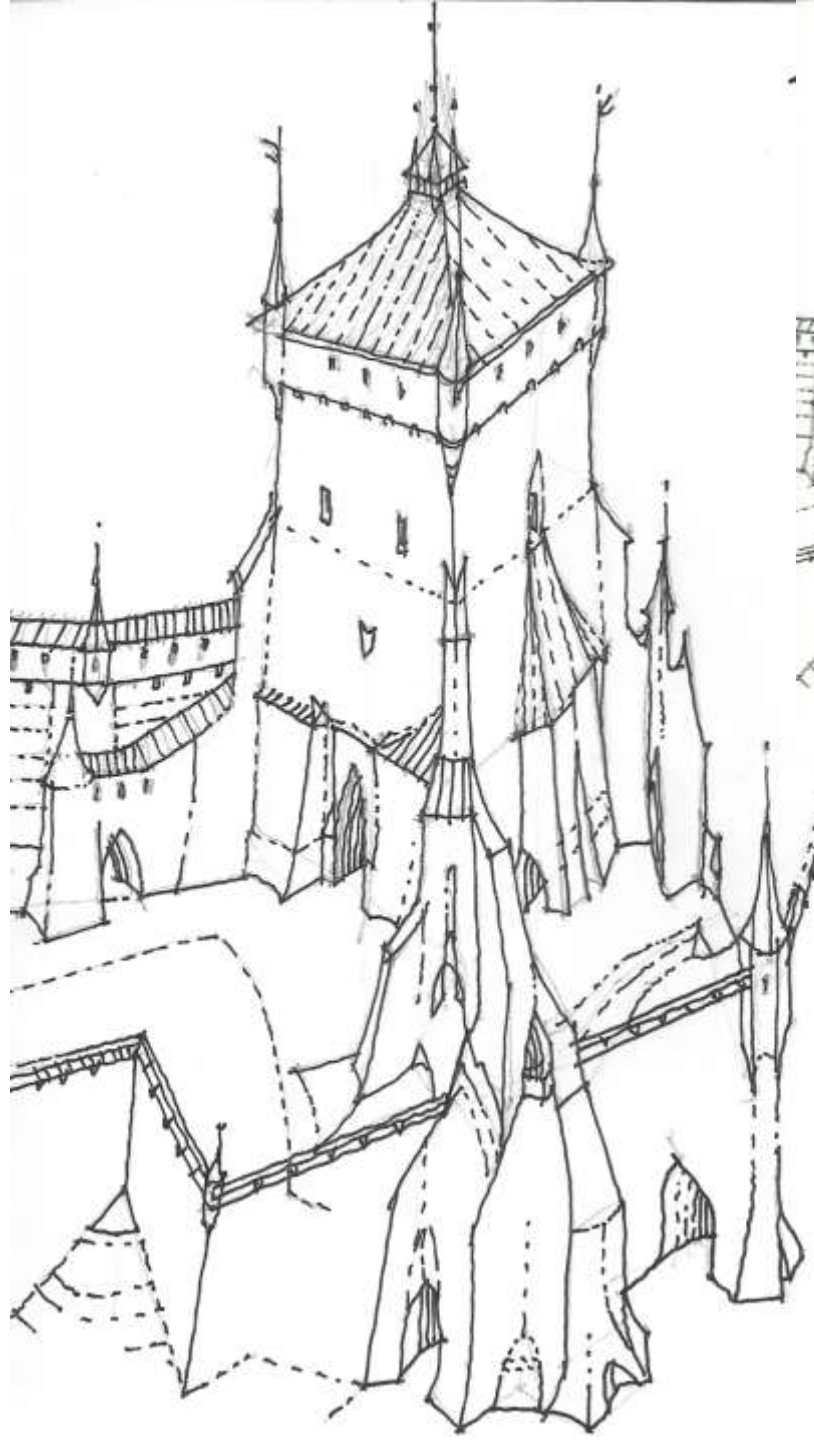






" gródek " wg. St. Wyspiańskiego

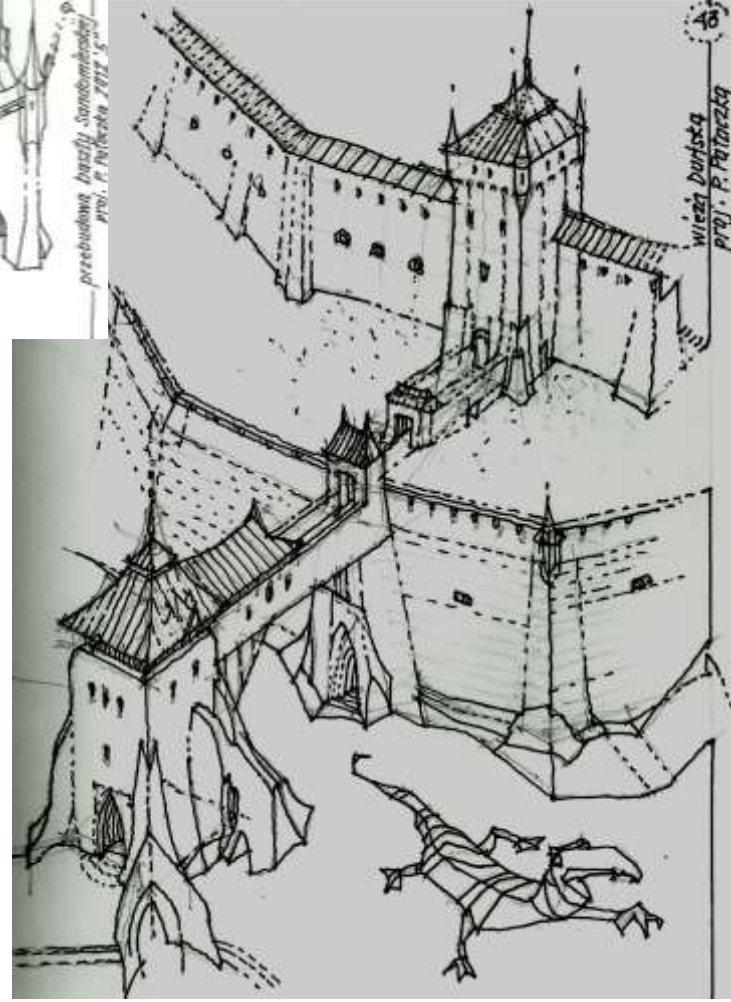
gródek podwawelski
wg. S. Wyspiańskiego



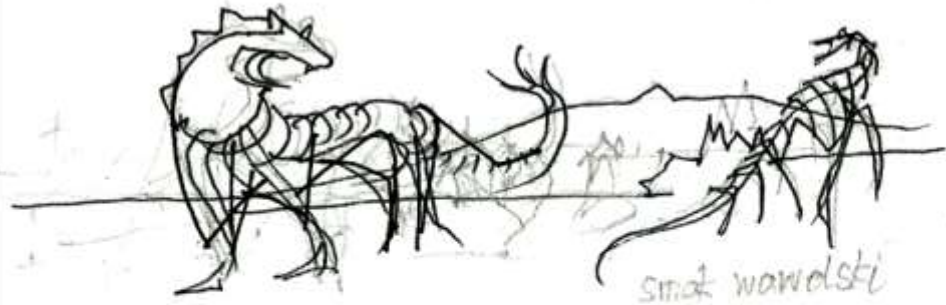
przebudowa baszty Sandomierskiej
 proj. P. Pałaczką 2012 '5"



przebudowa baszty Sandomierskiej
 PROJ. P. Pałaczką 2012 '5"



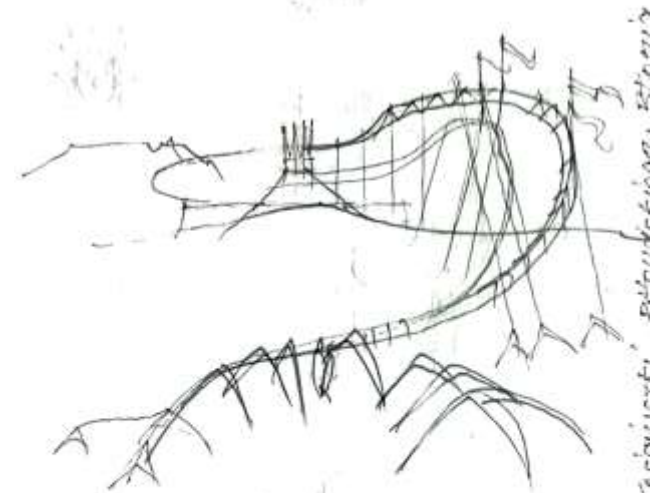
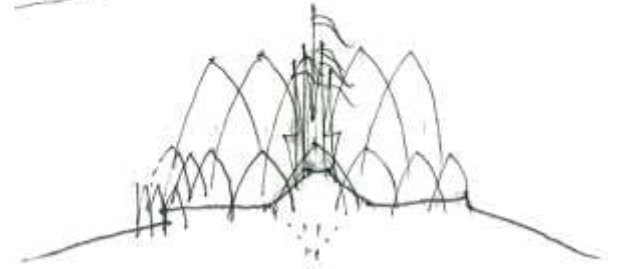
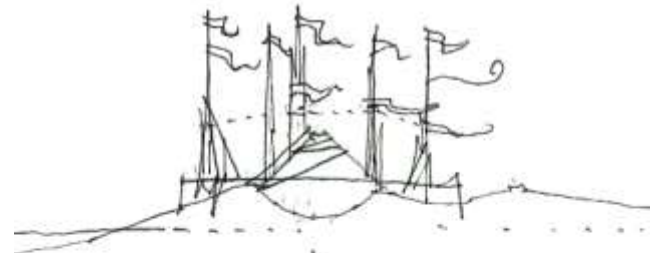
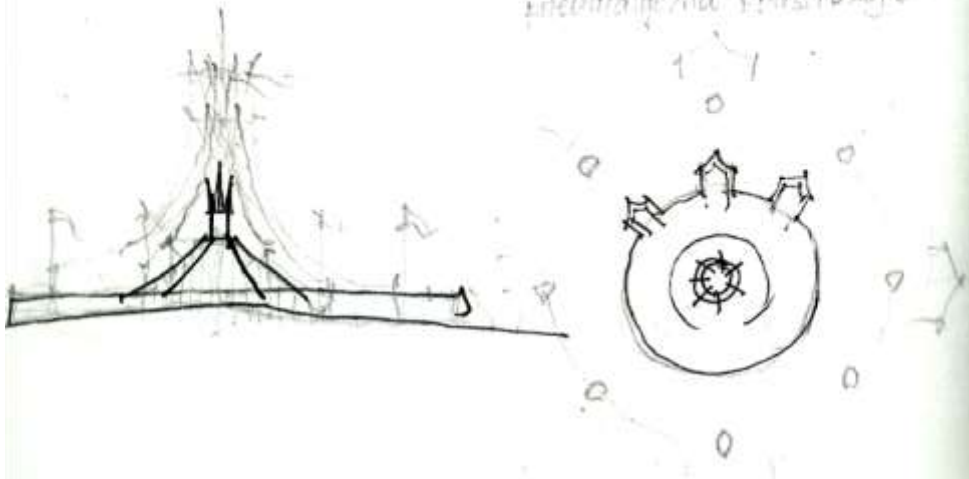
wieża Durliska
 PROJ. P. Pałaczką



smok wawelski



neumatyczna konstrukcja



konstrukcja pneumatyczna, Ballonobus, B. 1955

