

PIOTR PATOCZKA

Uwagi o rysowaniu wnętrz krajobrazowych

Wydanie drugie



podręcznik dla studentów wyższych szkół technicznych

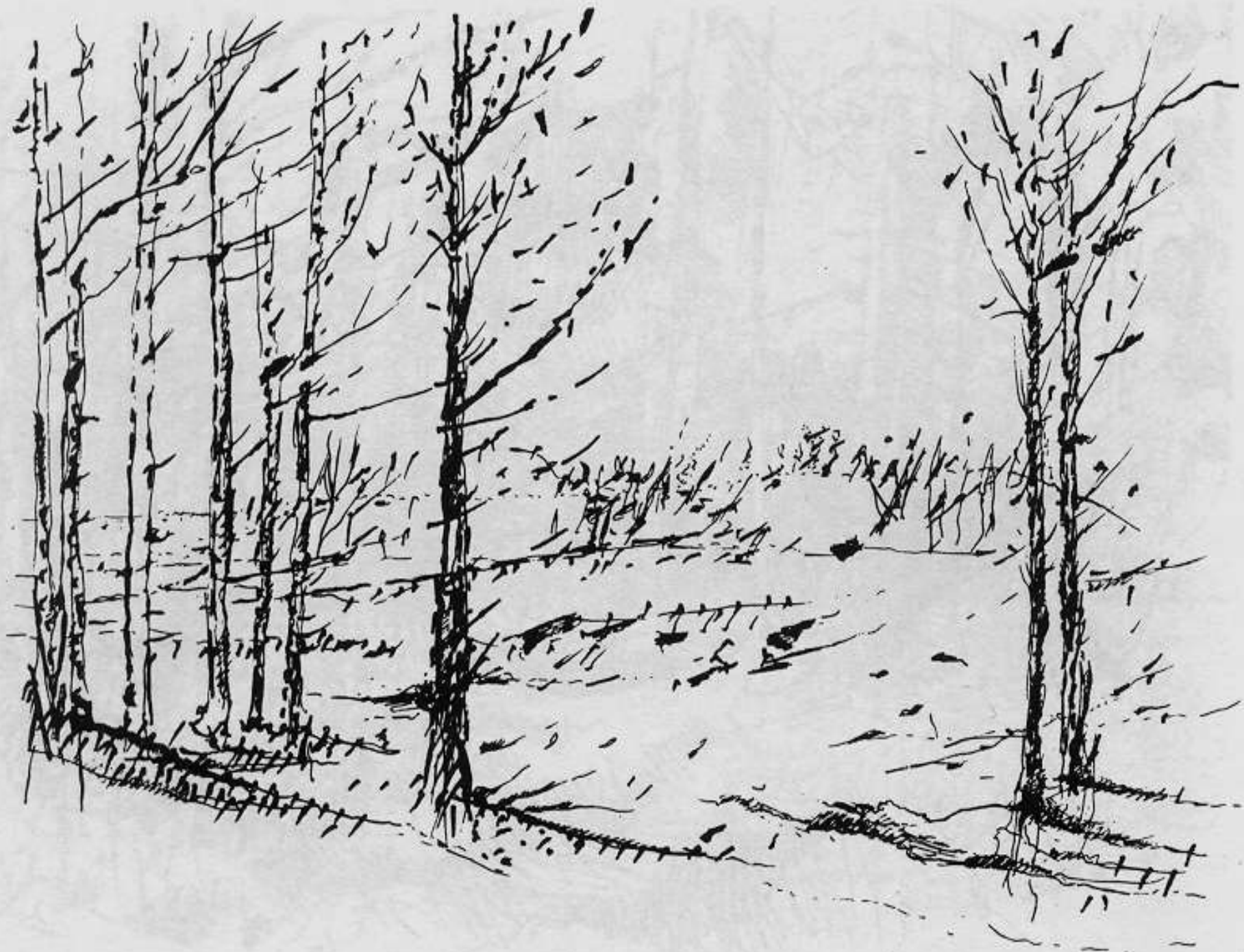
POLITECHNIKA KRAKOWSKA
im. Tadeusza Kościuszki

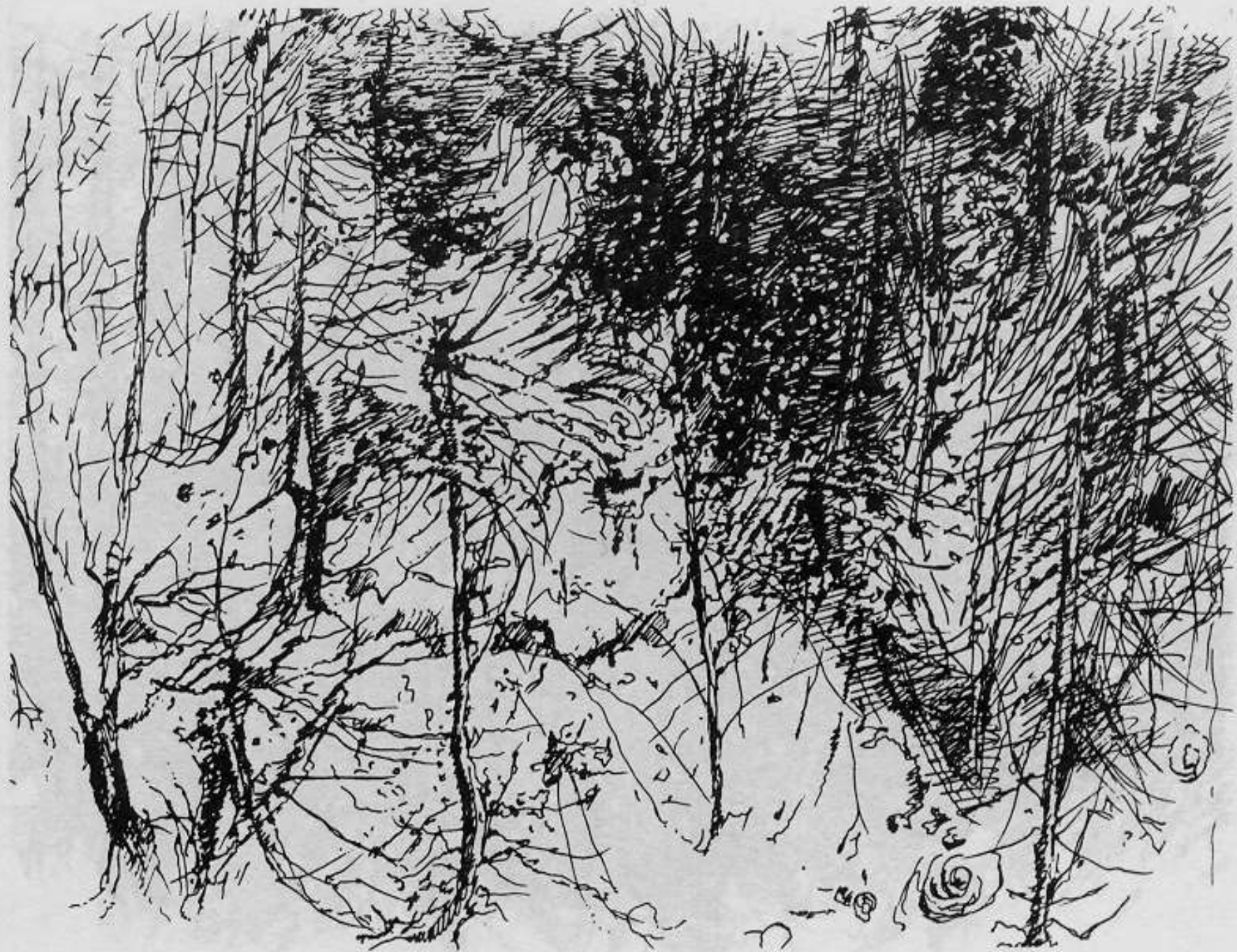


Kraków 1999









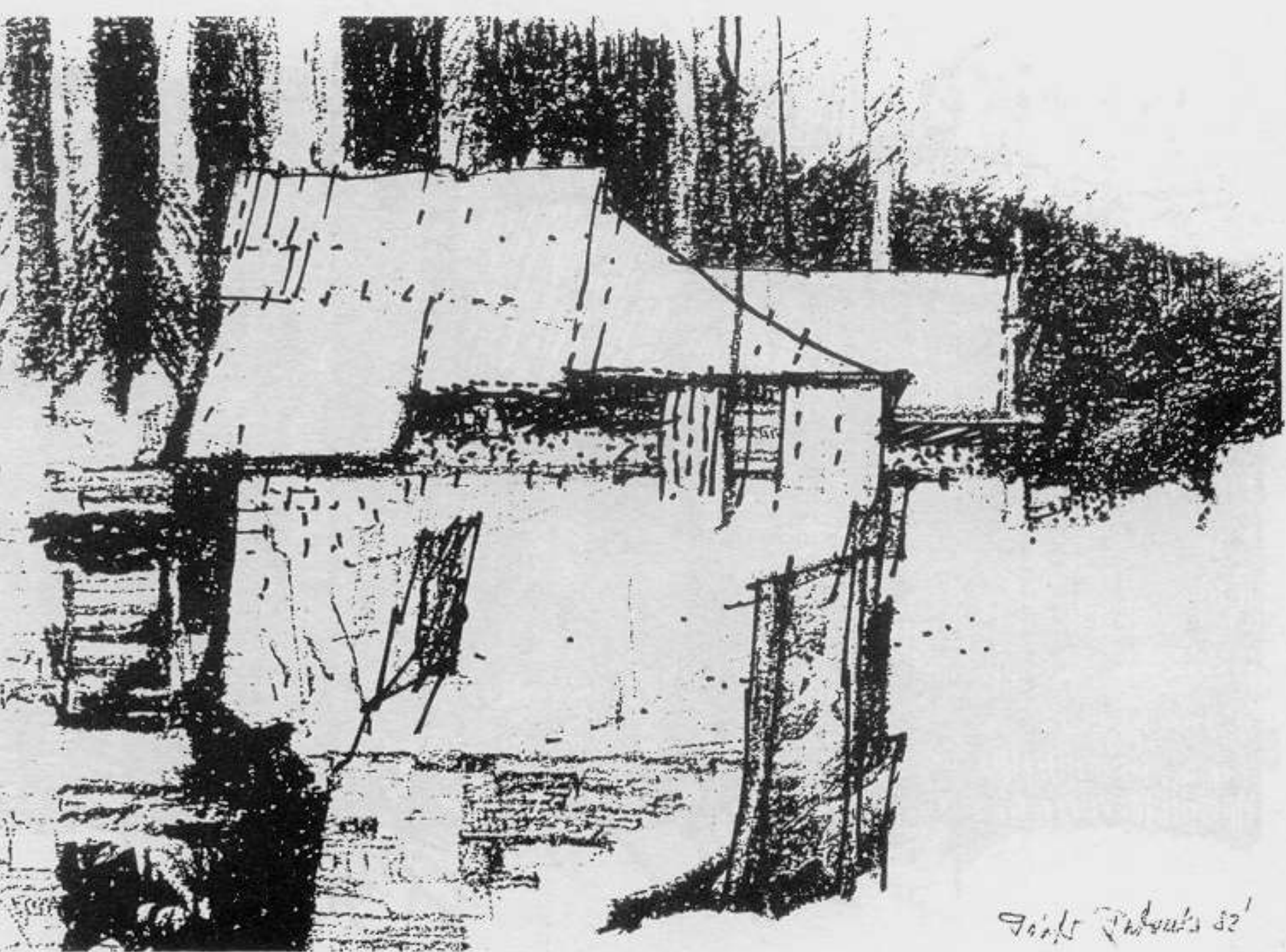




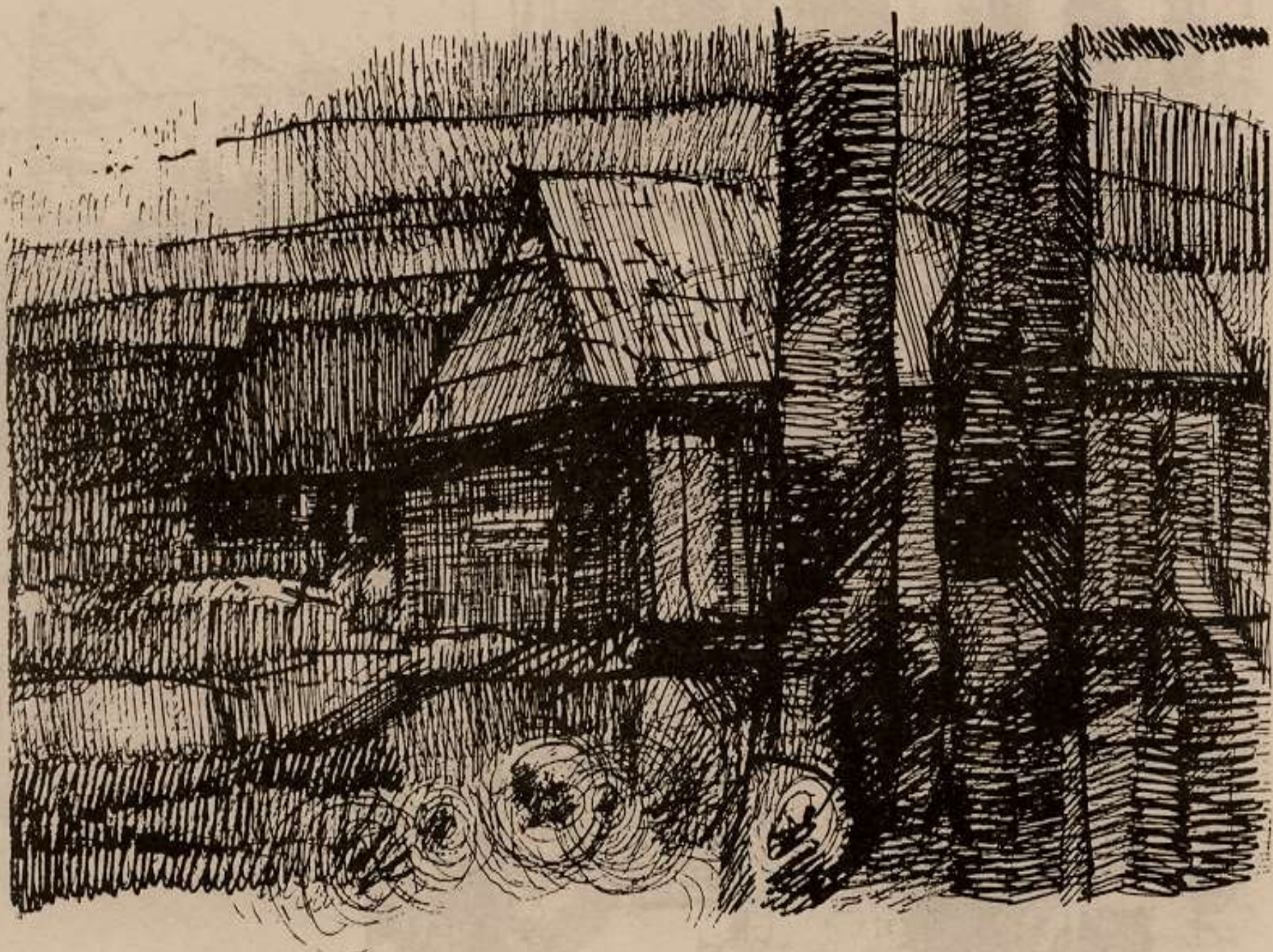


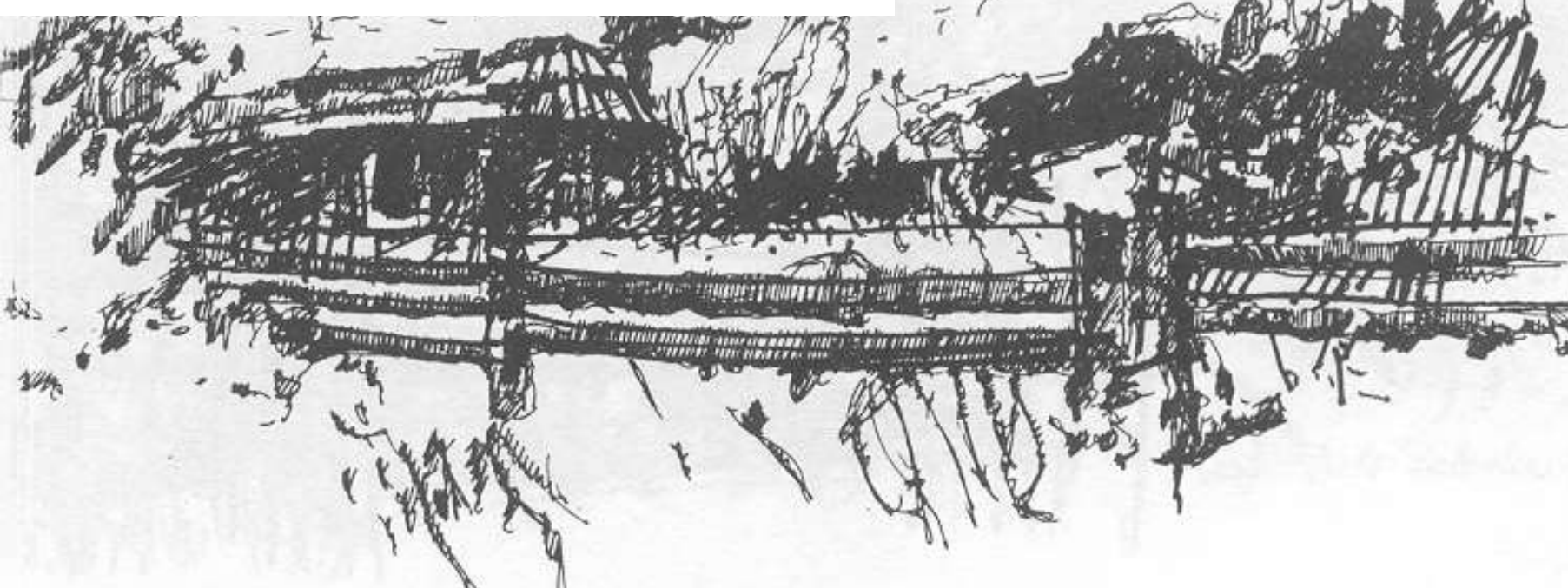
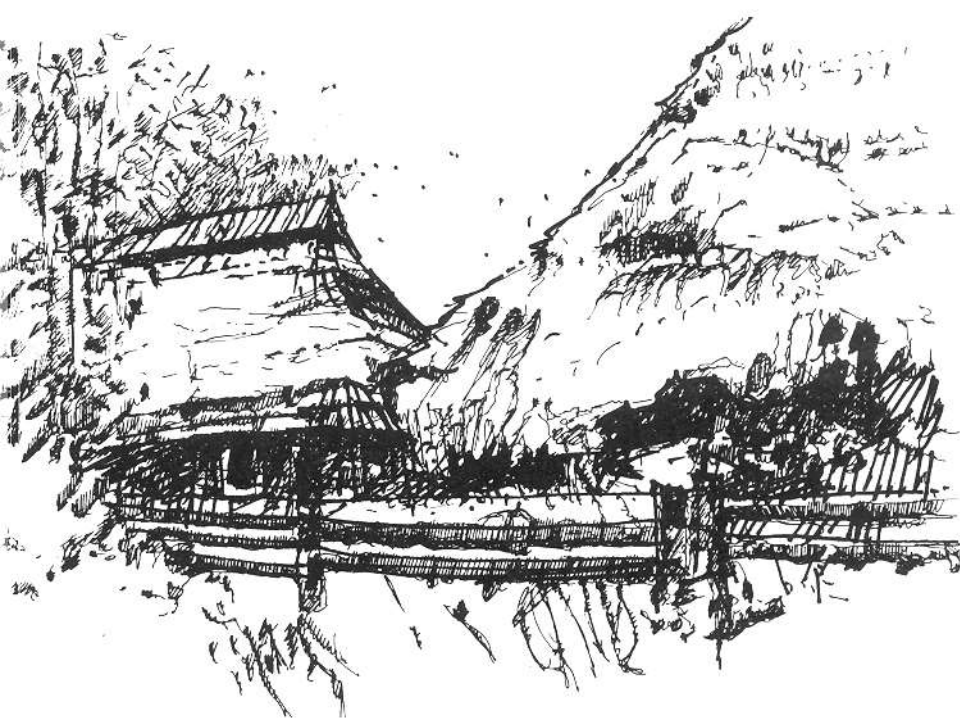


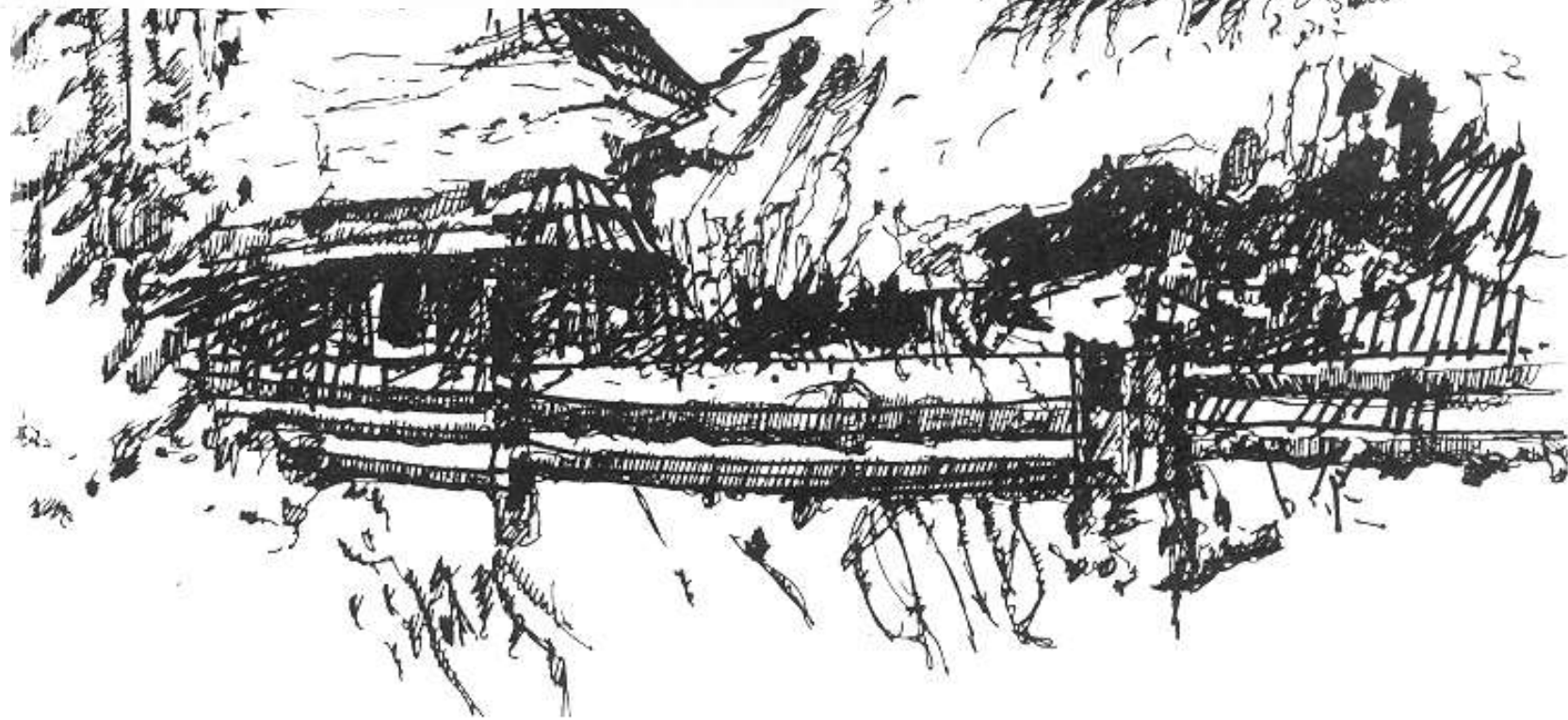
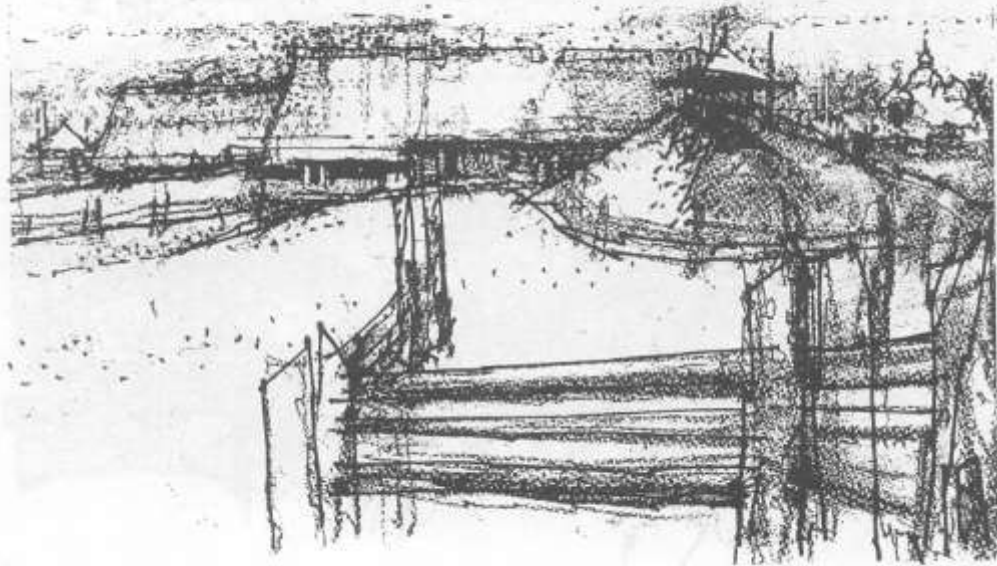


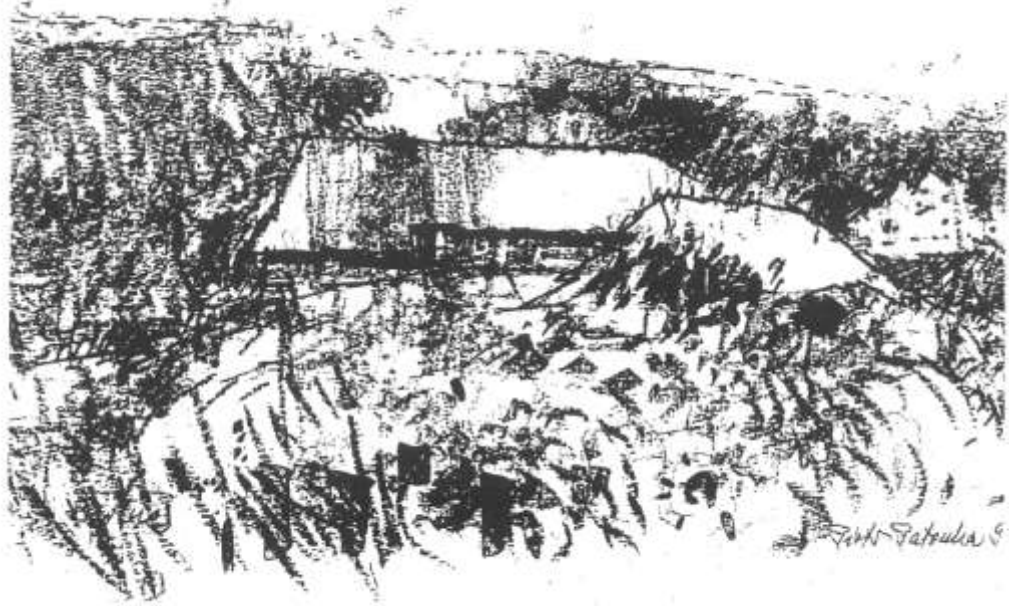


Point Roberts 52'







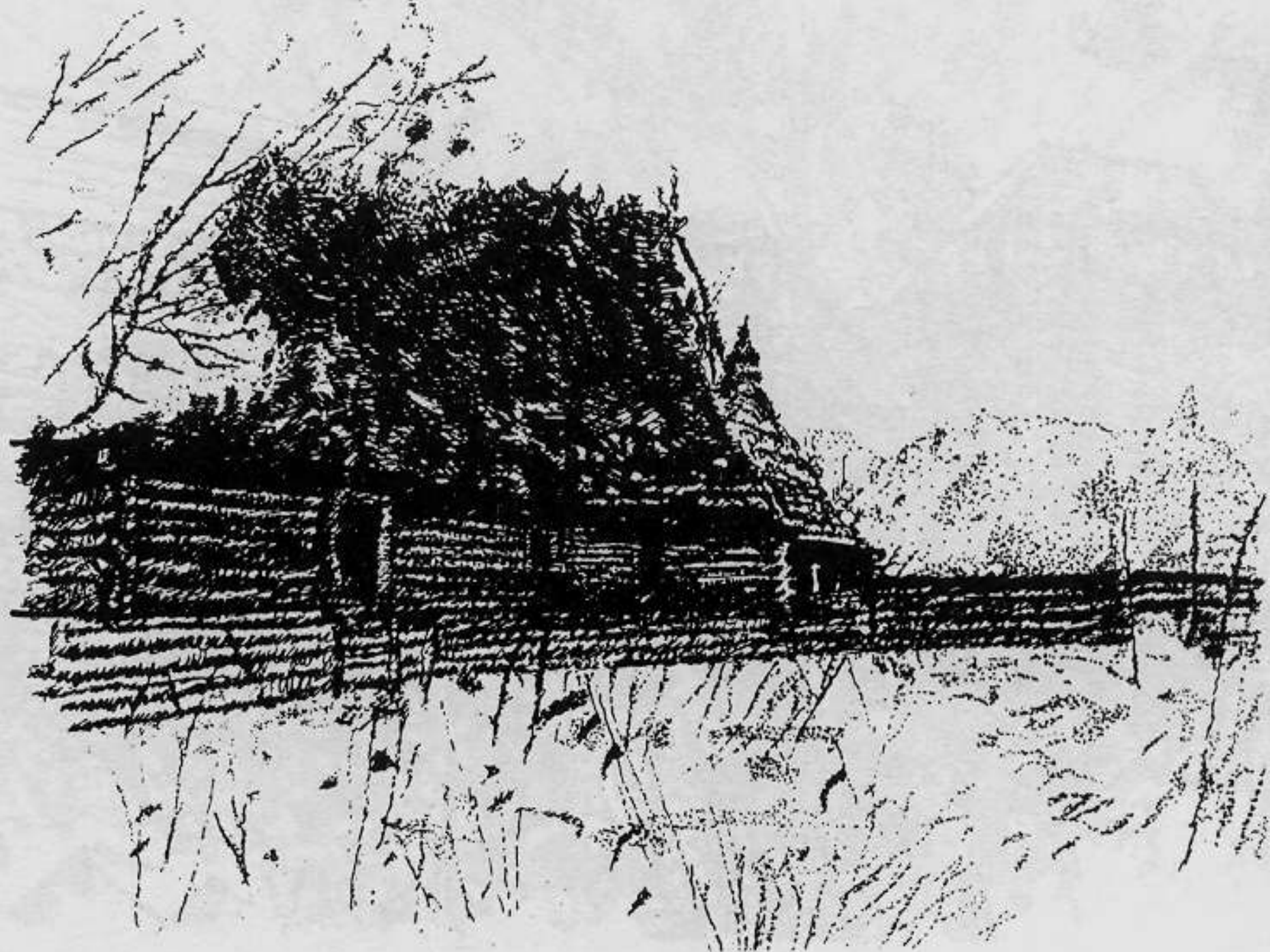


Tink Patoula ©

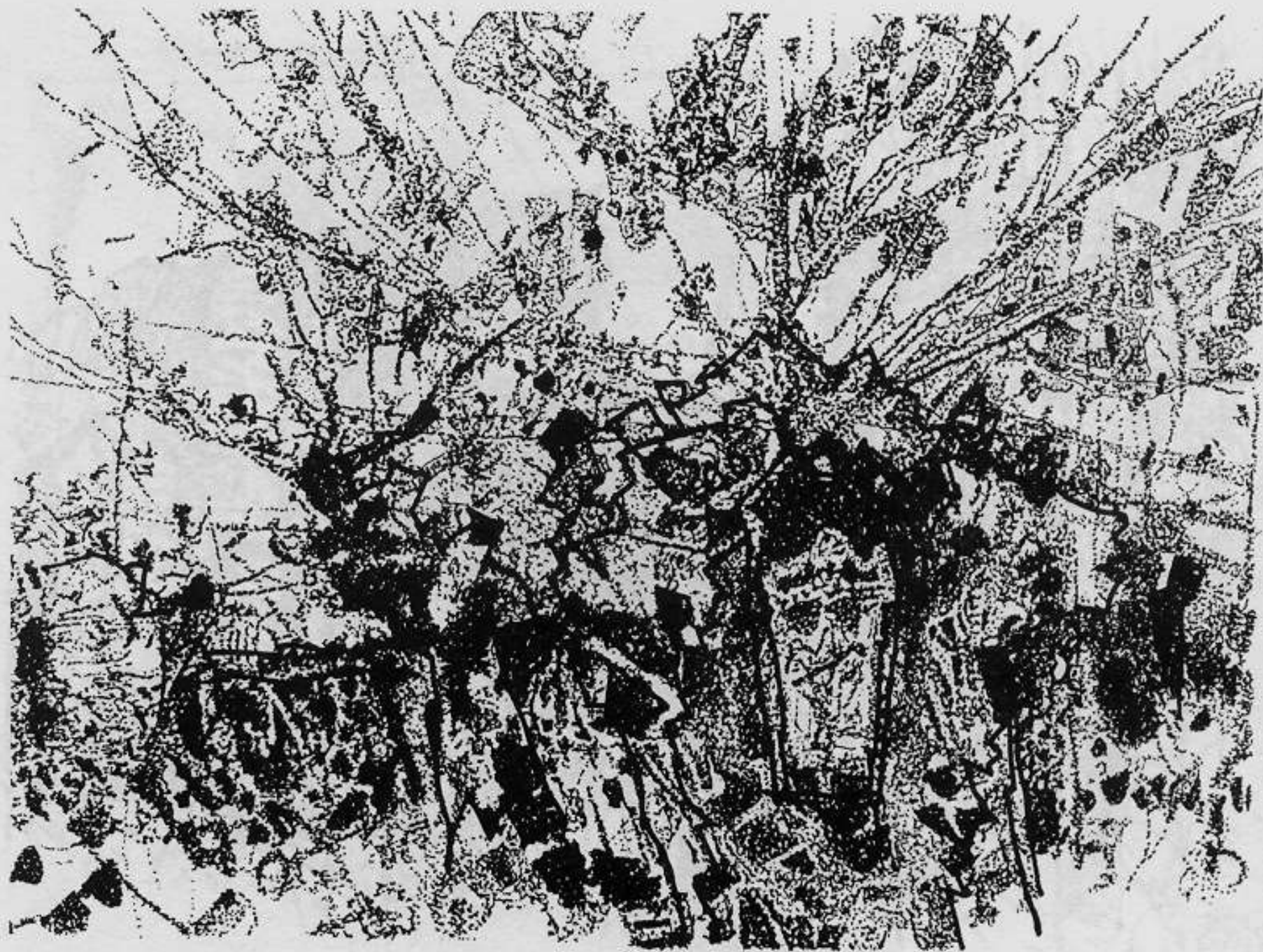


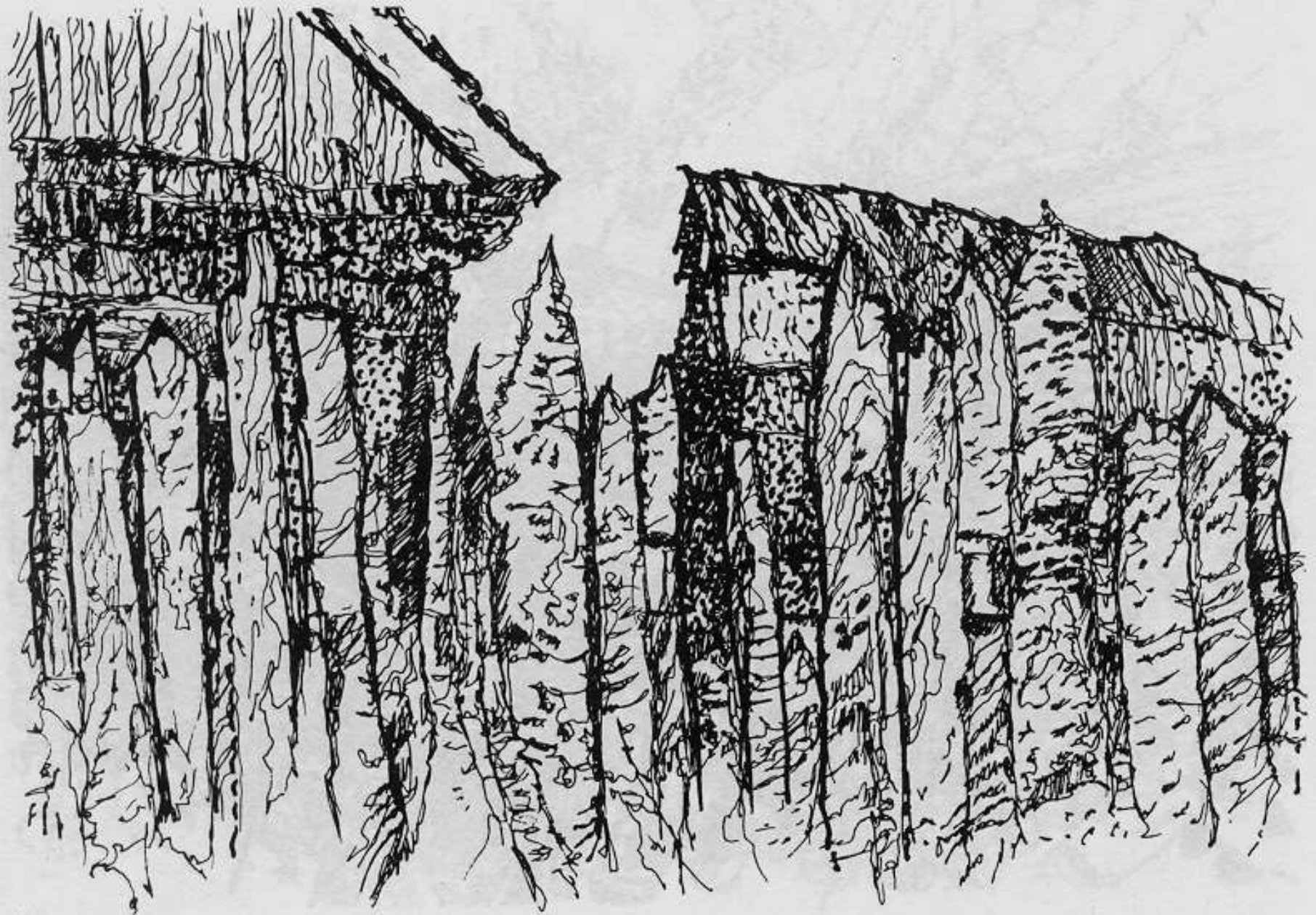
Tink Patoula ©

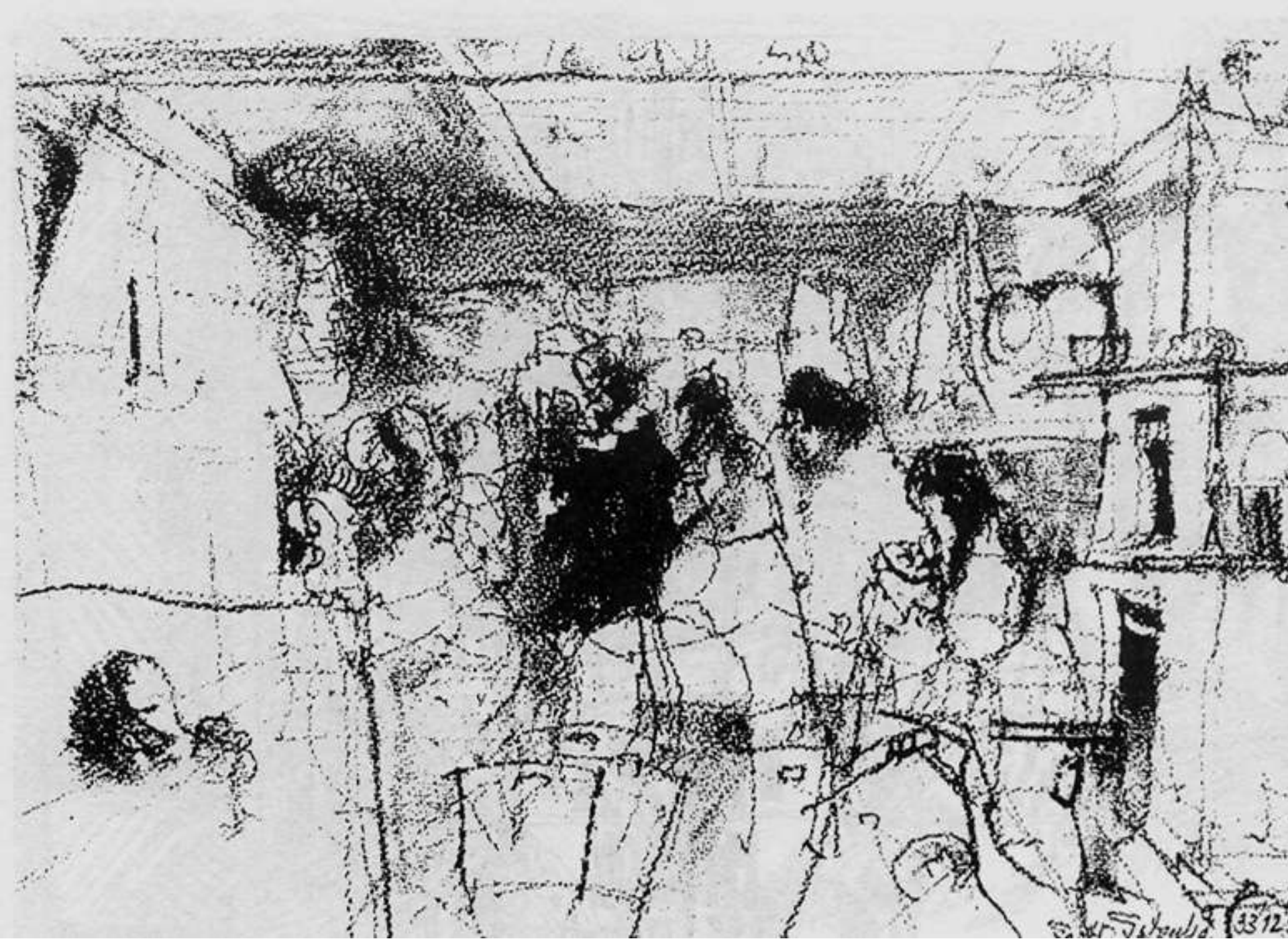


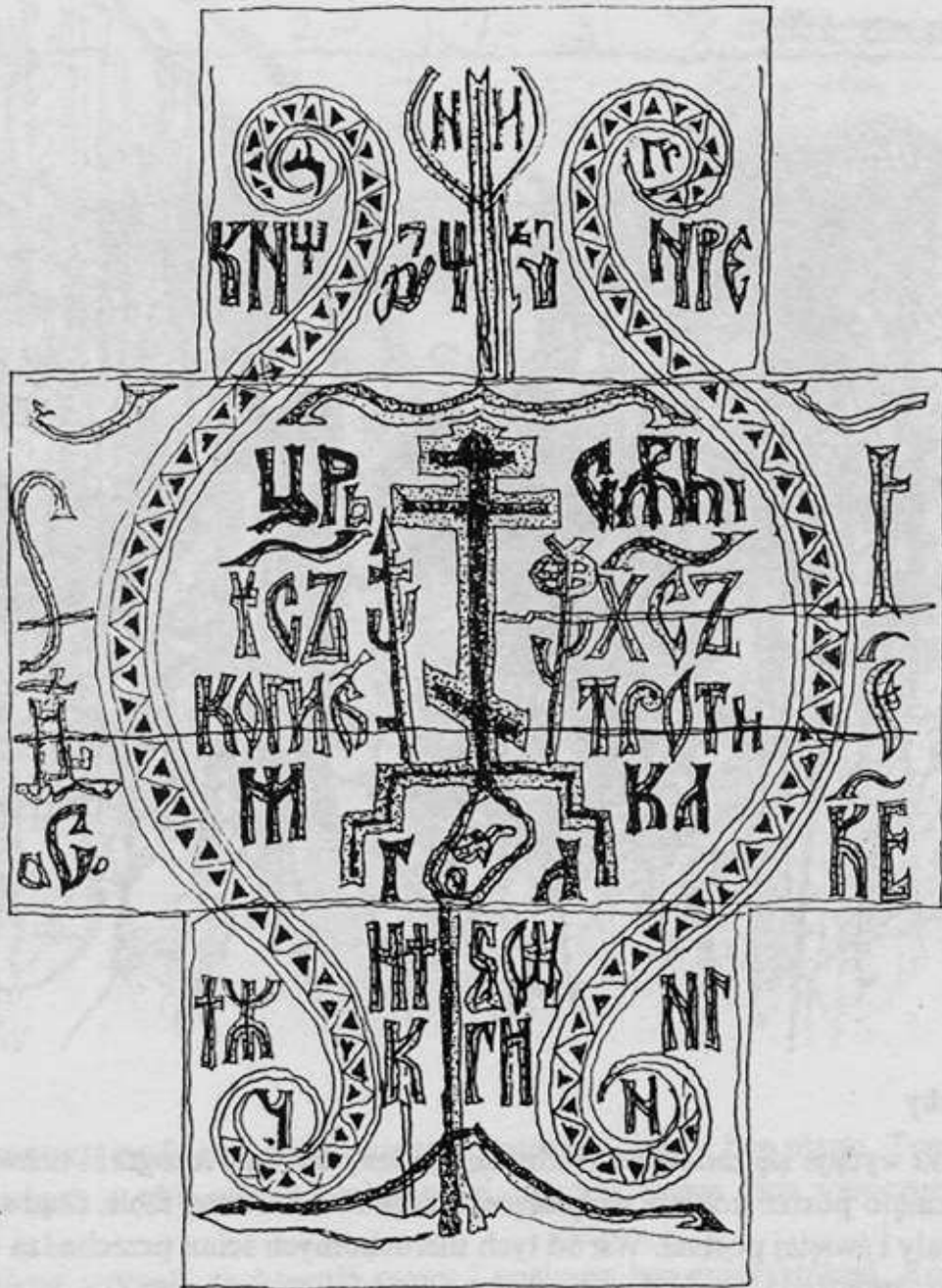




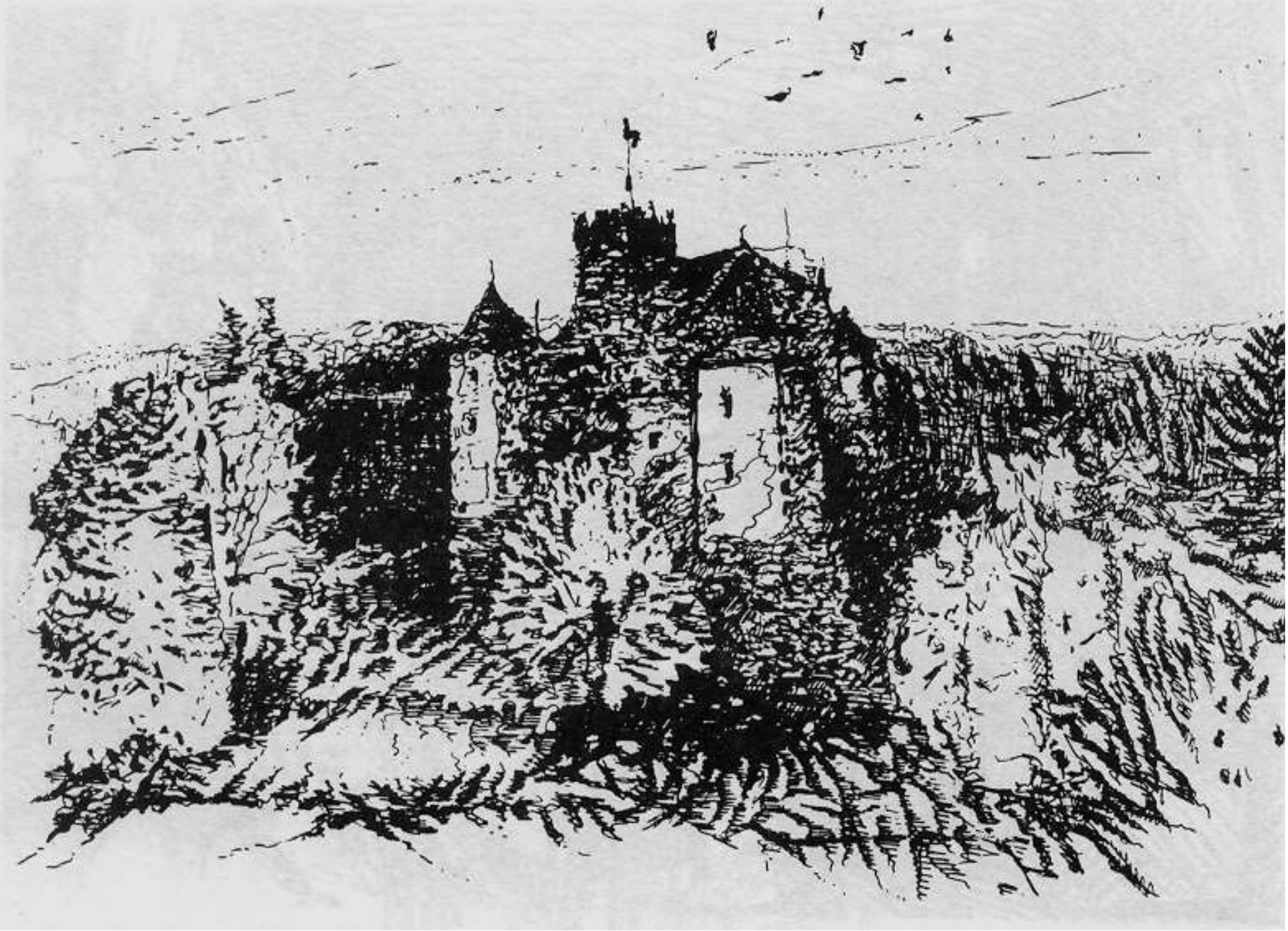


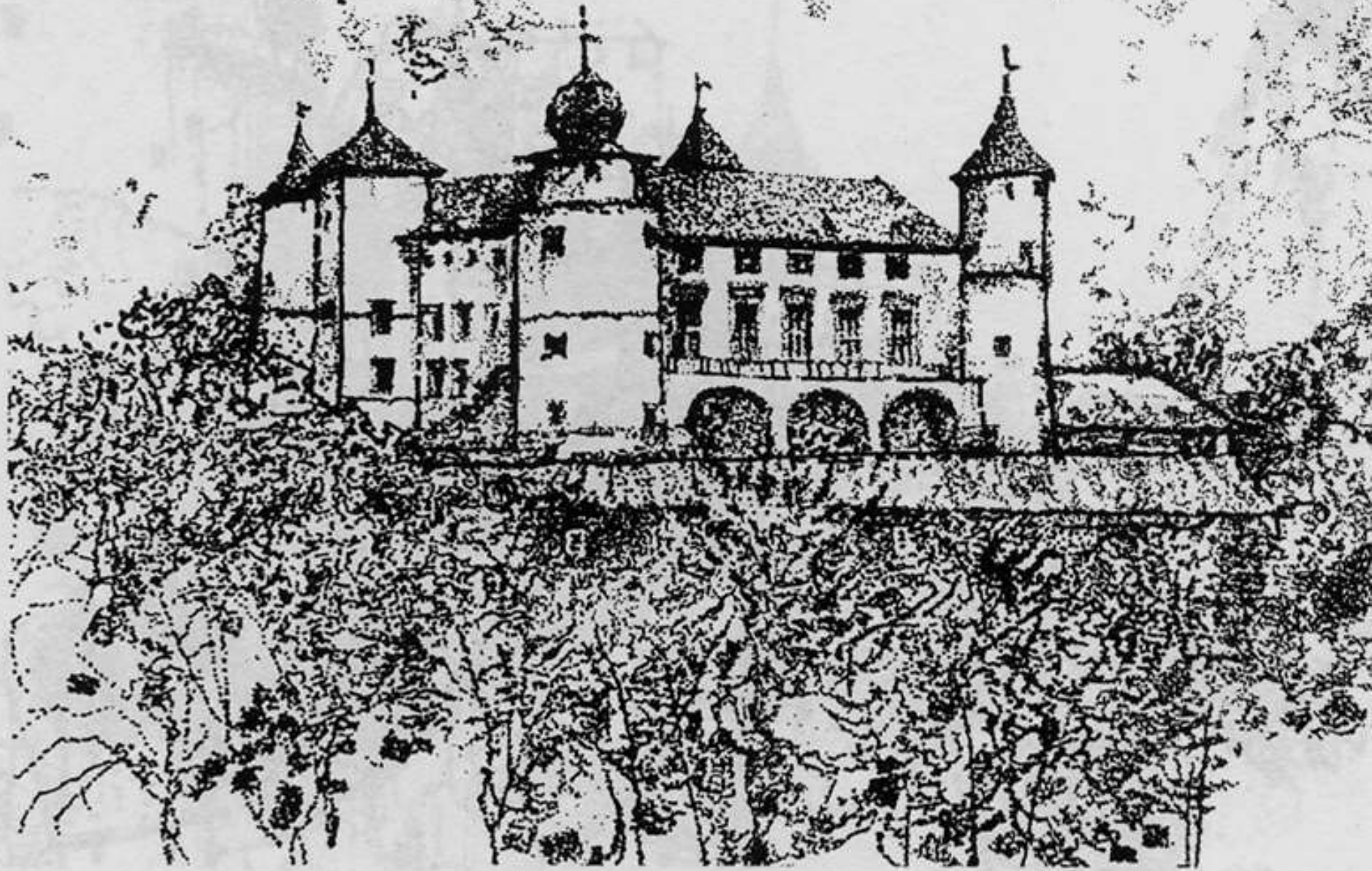


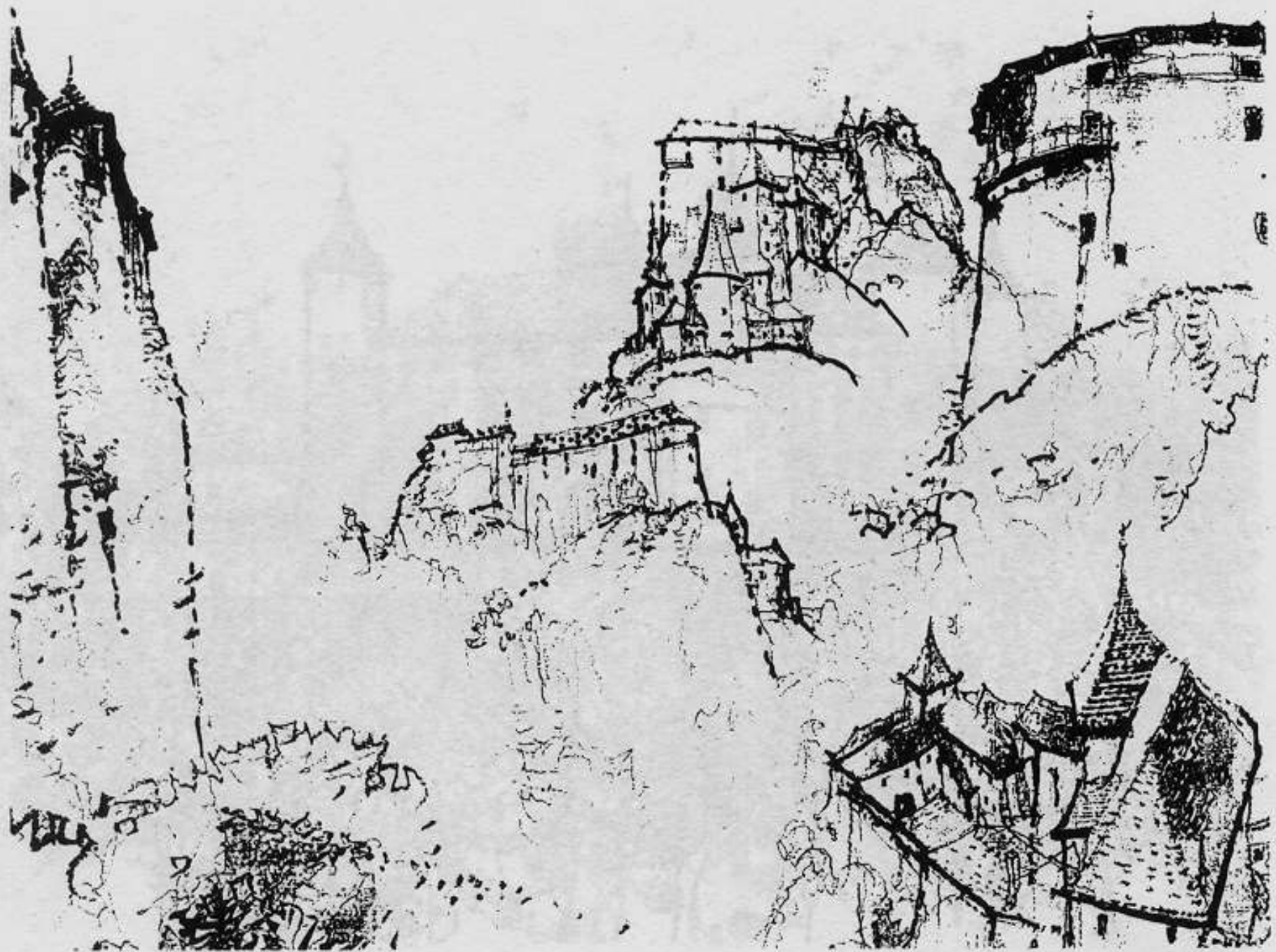


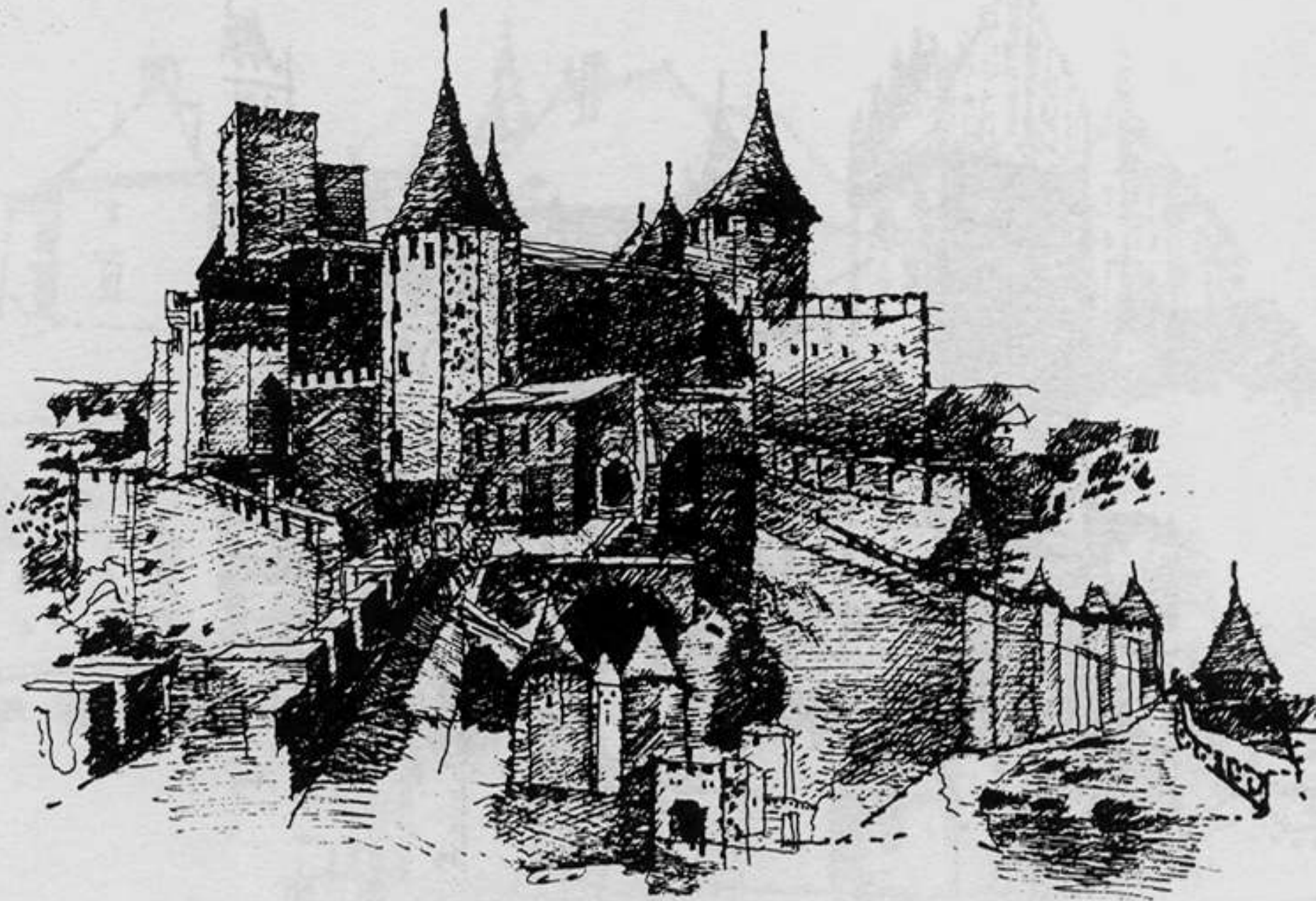


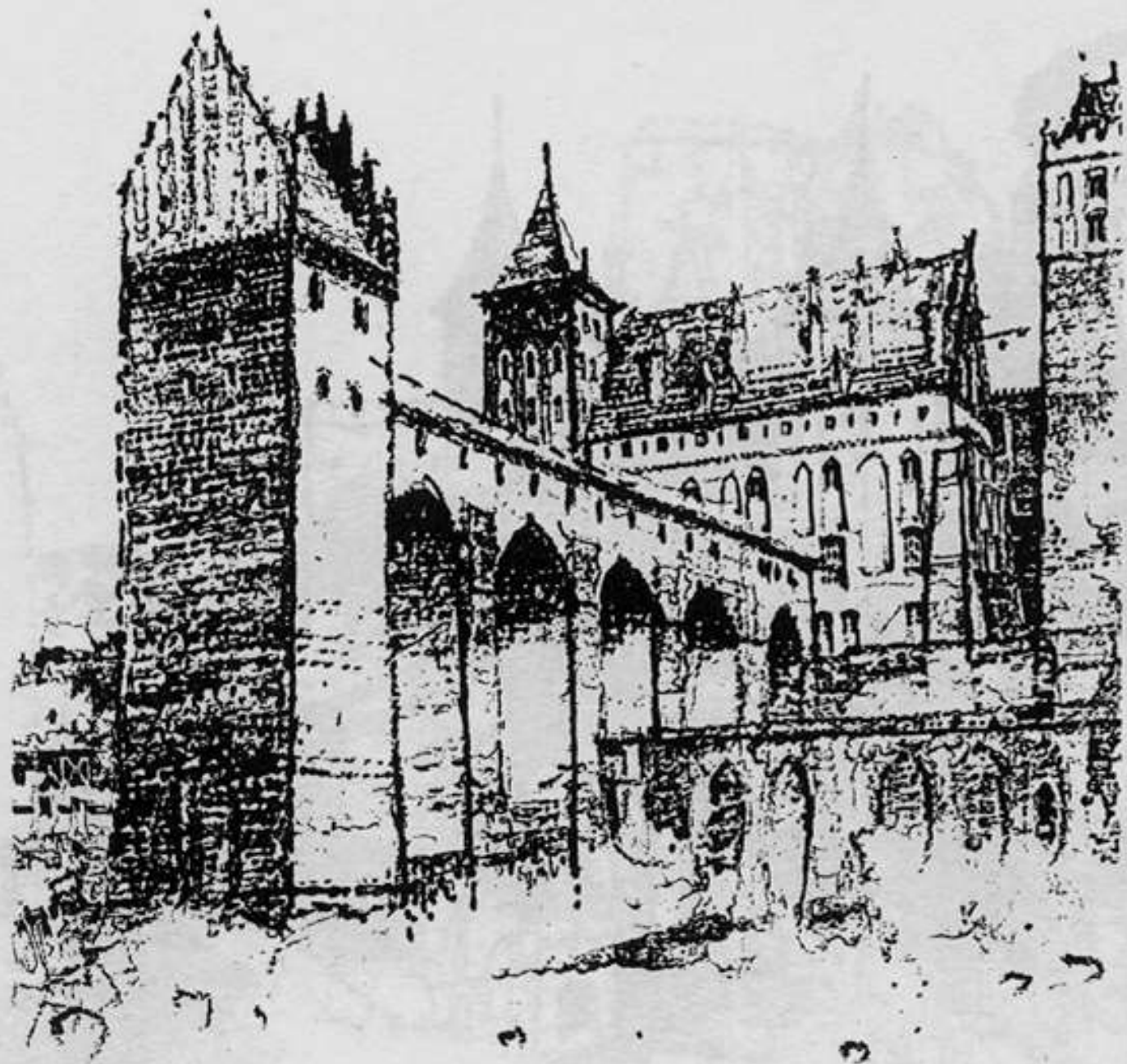


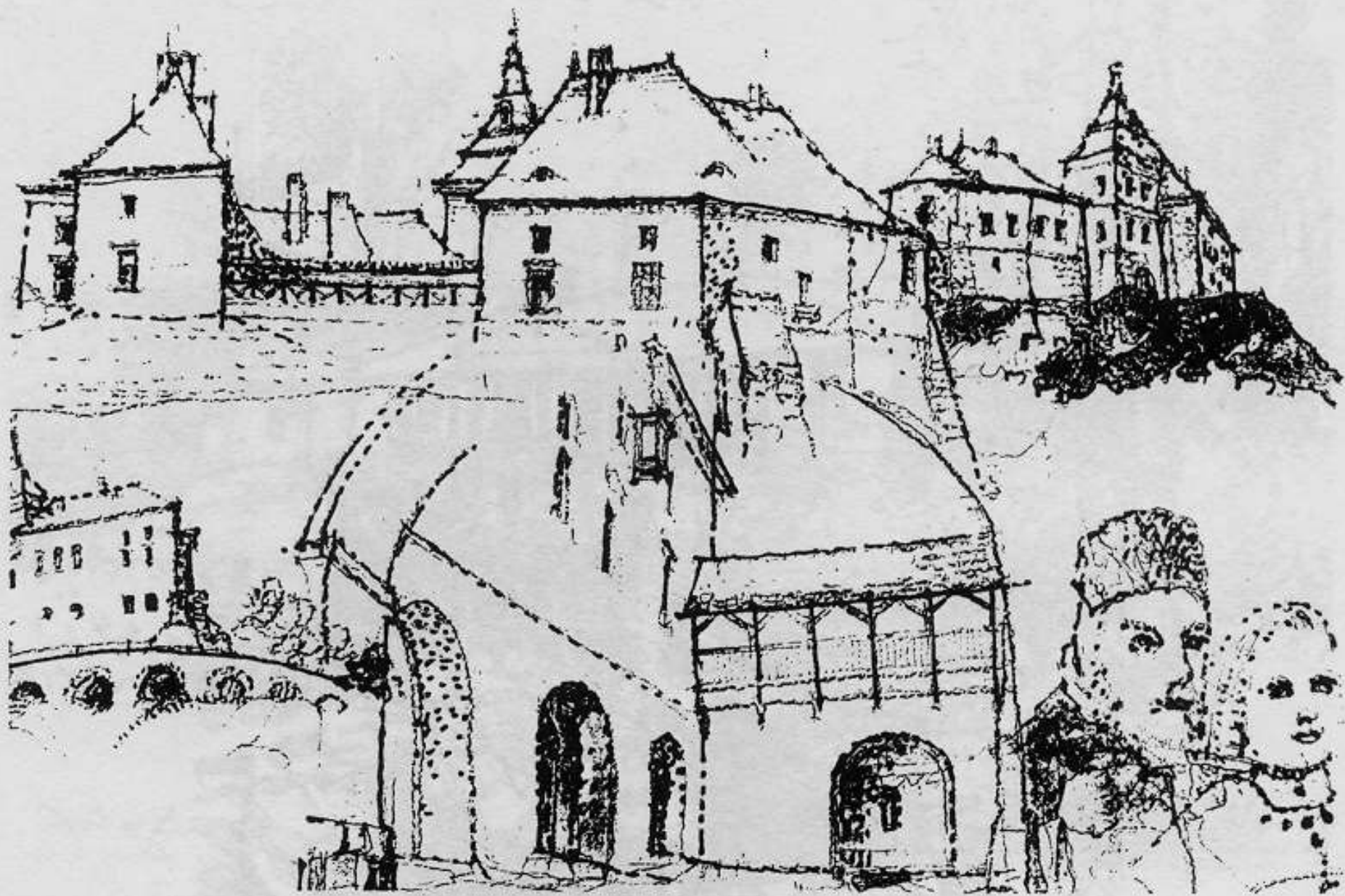


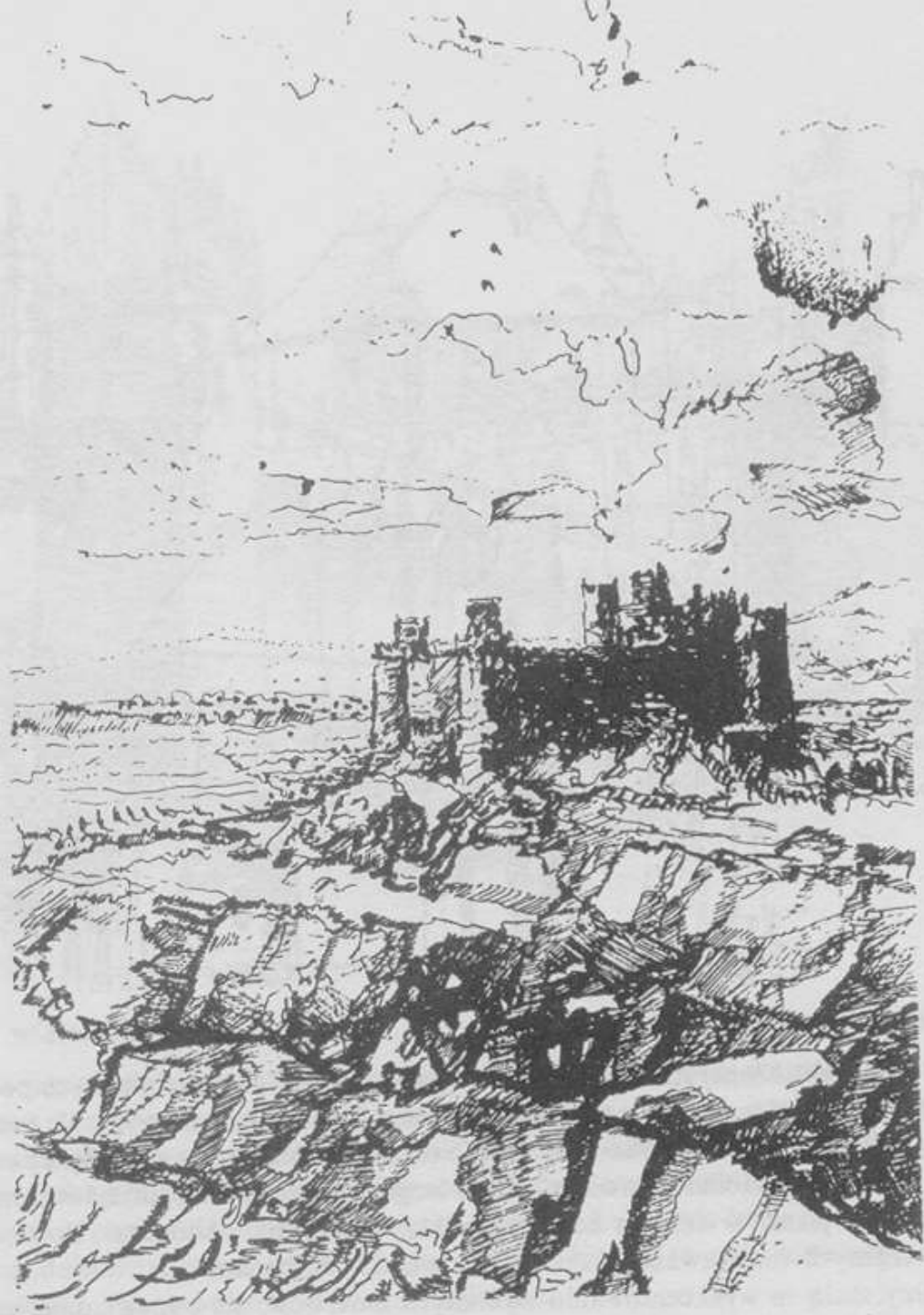




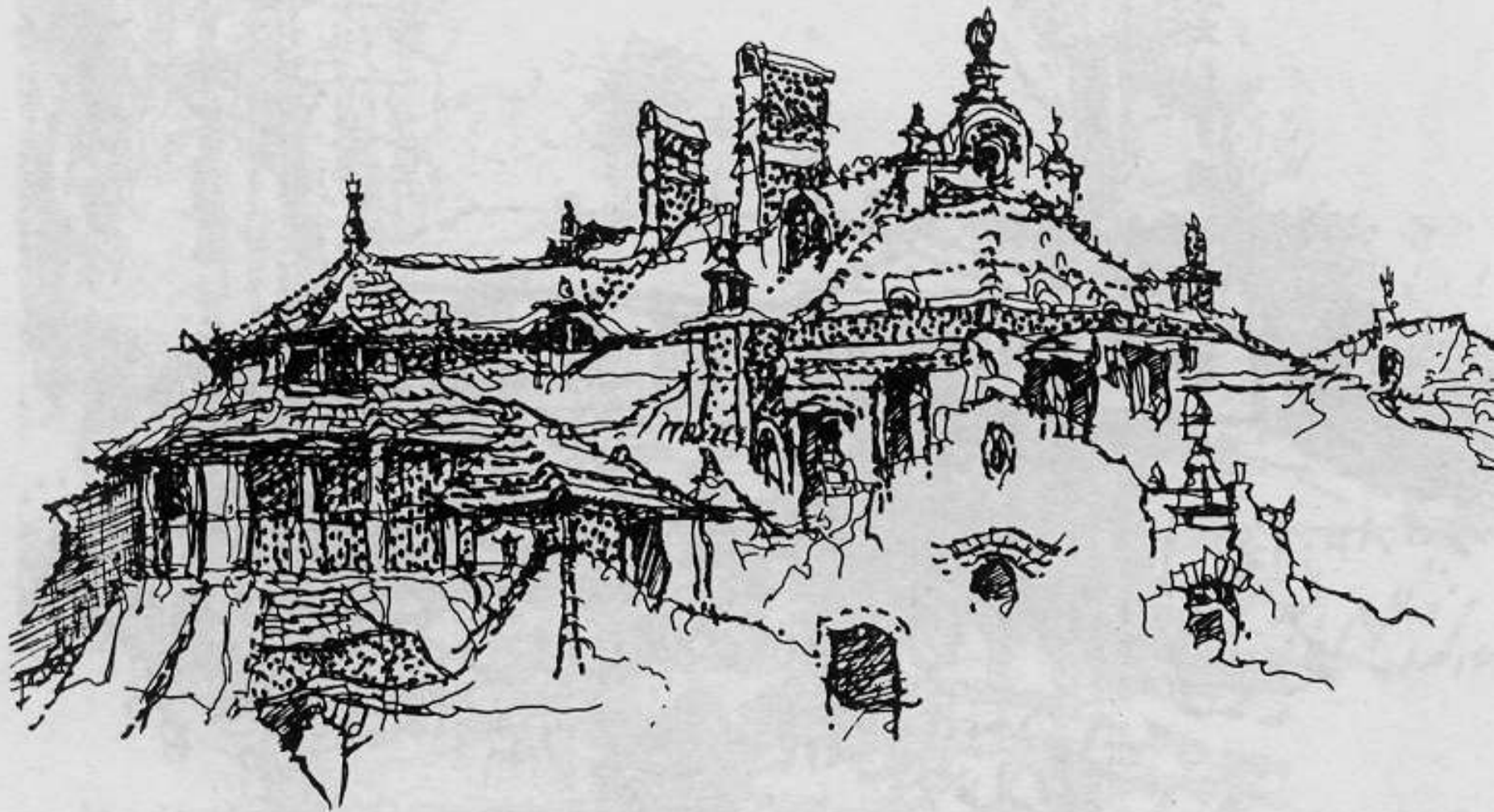








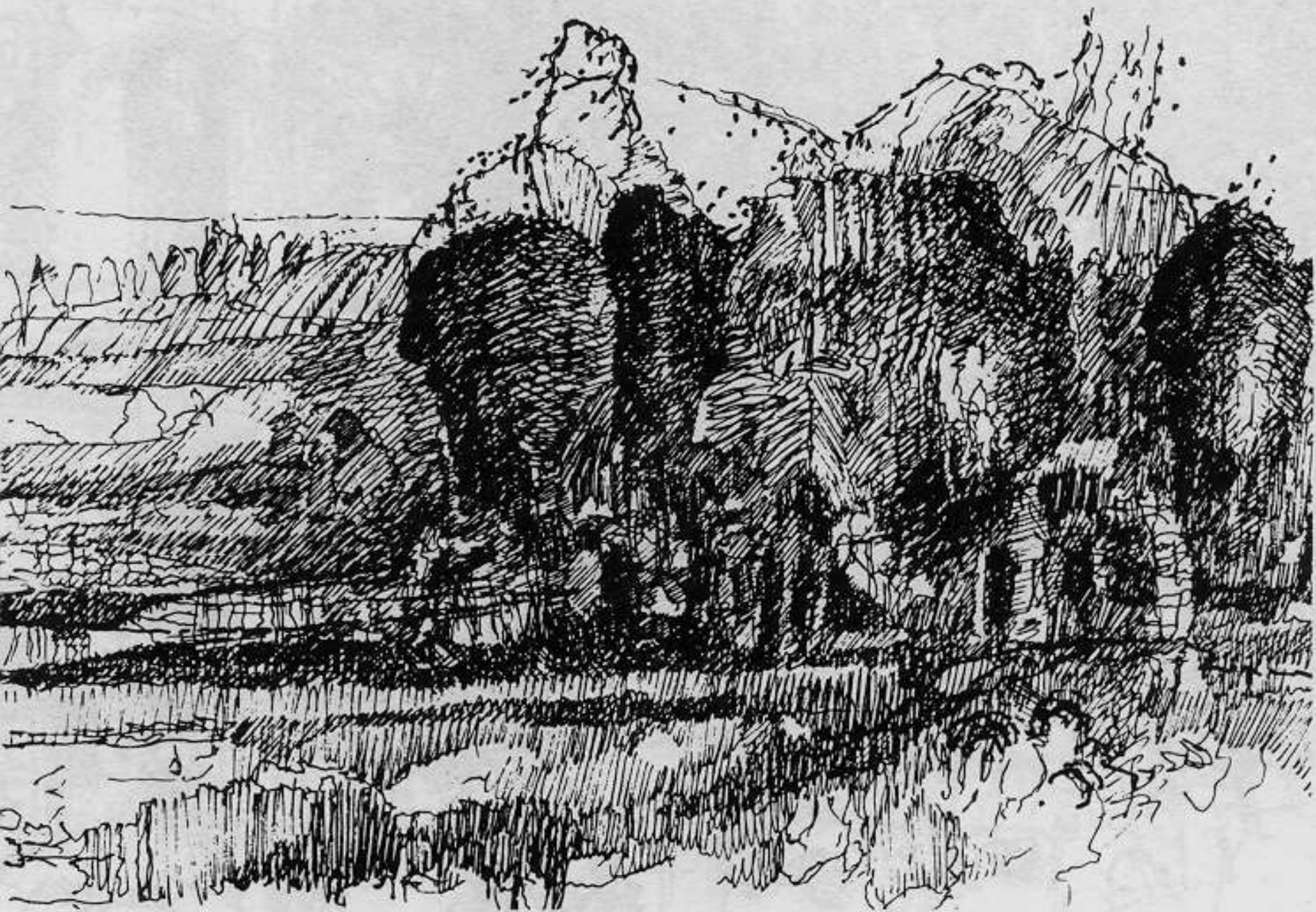


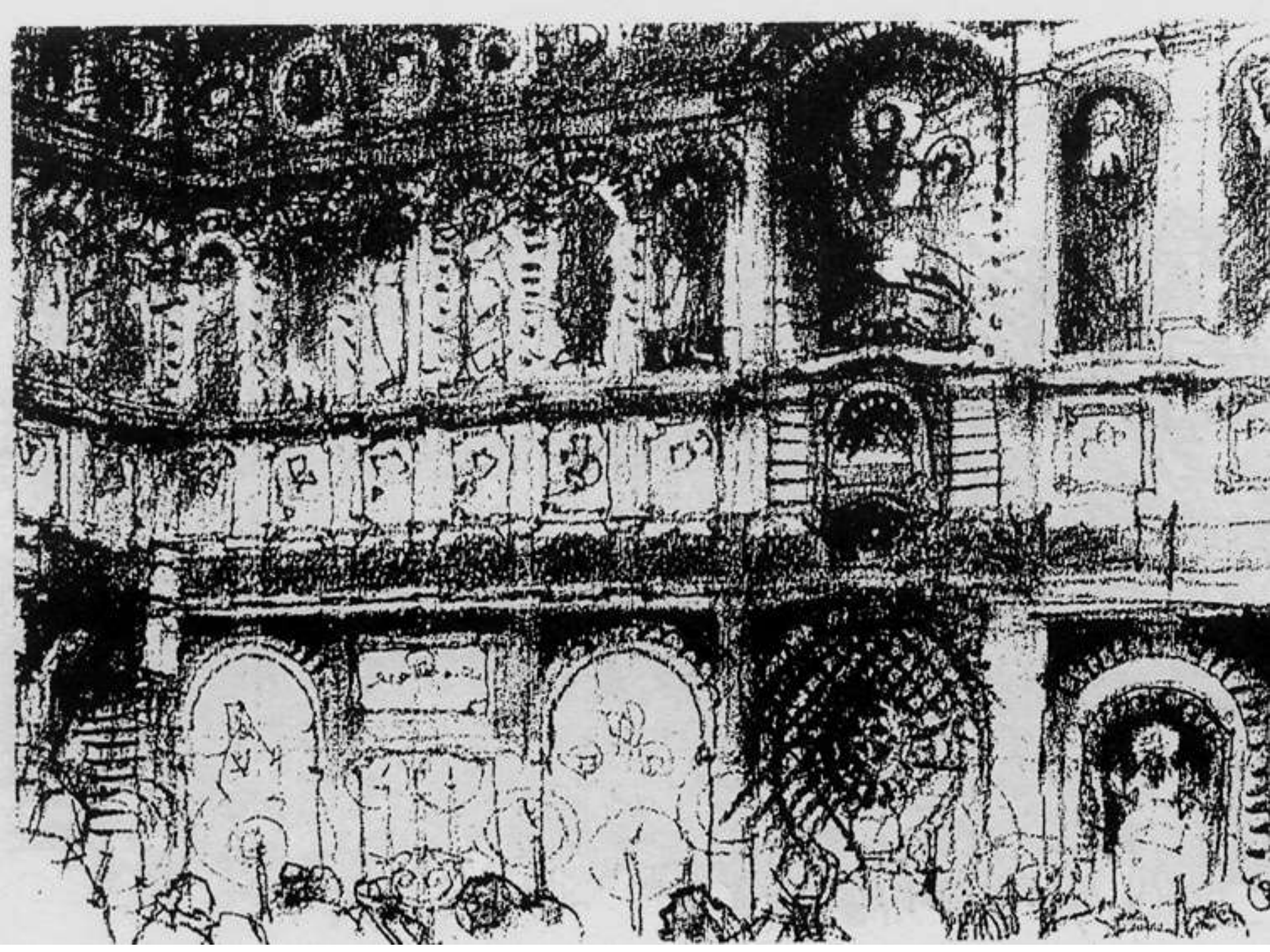


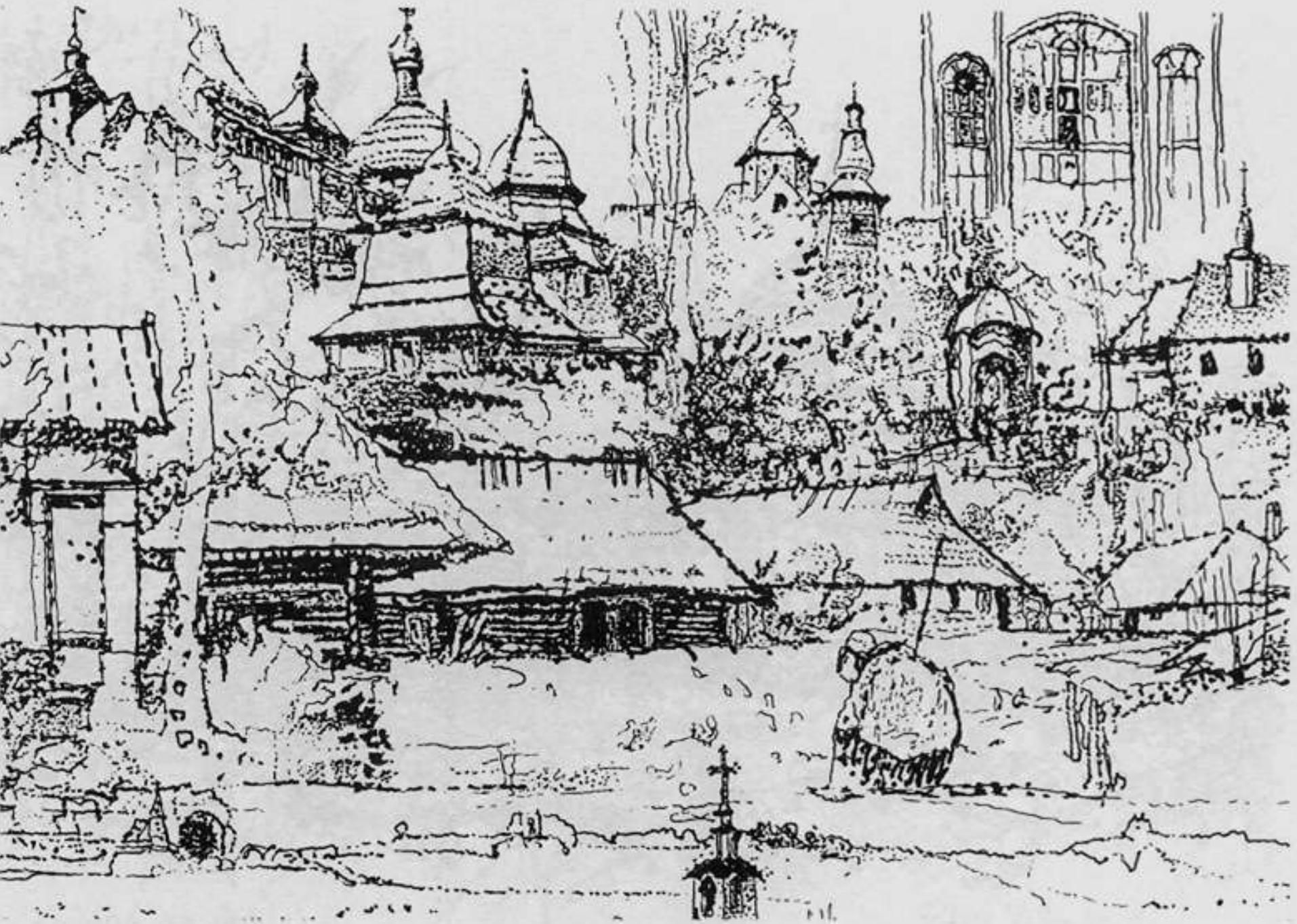


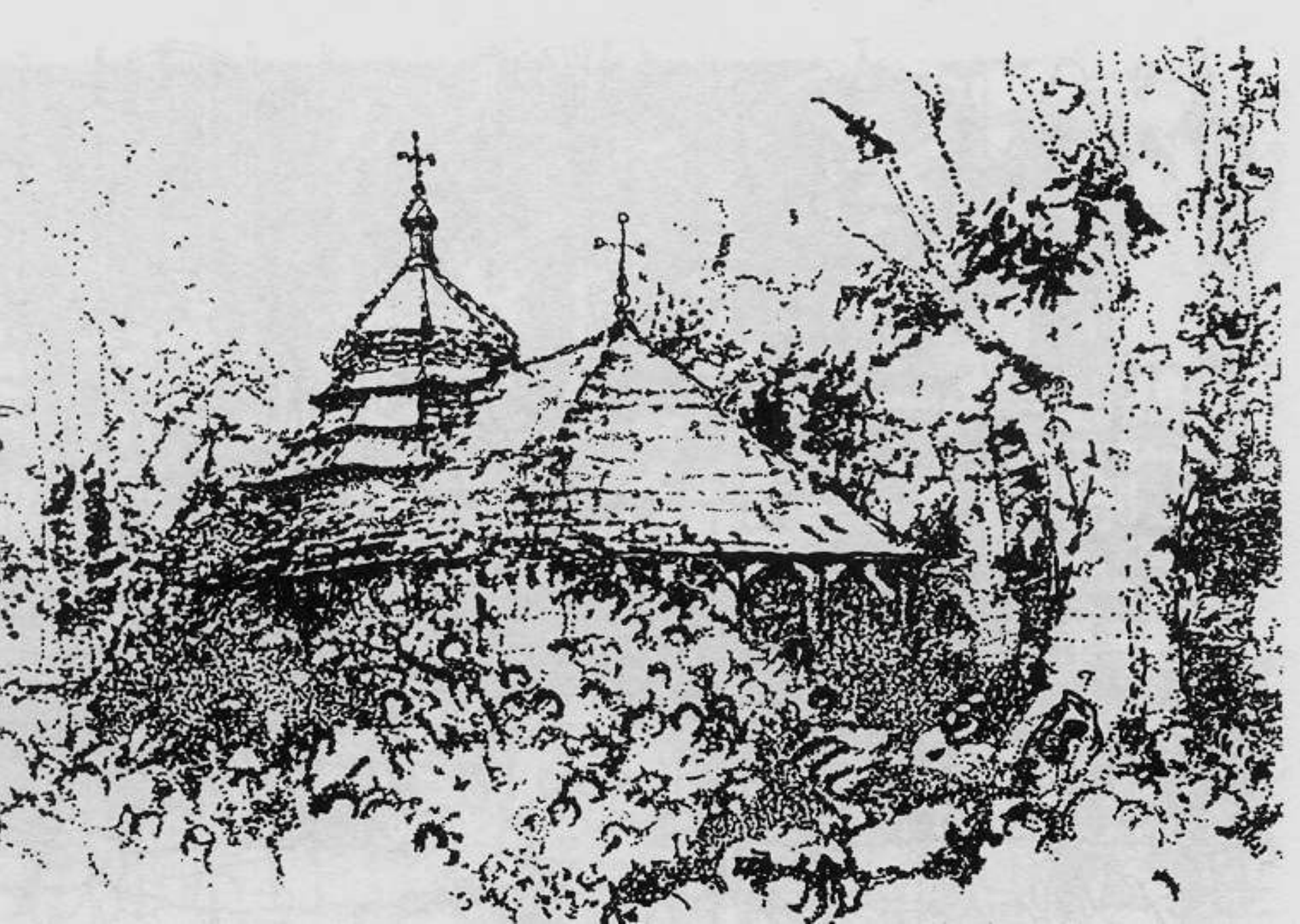
1874. G. S. G. P. H.







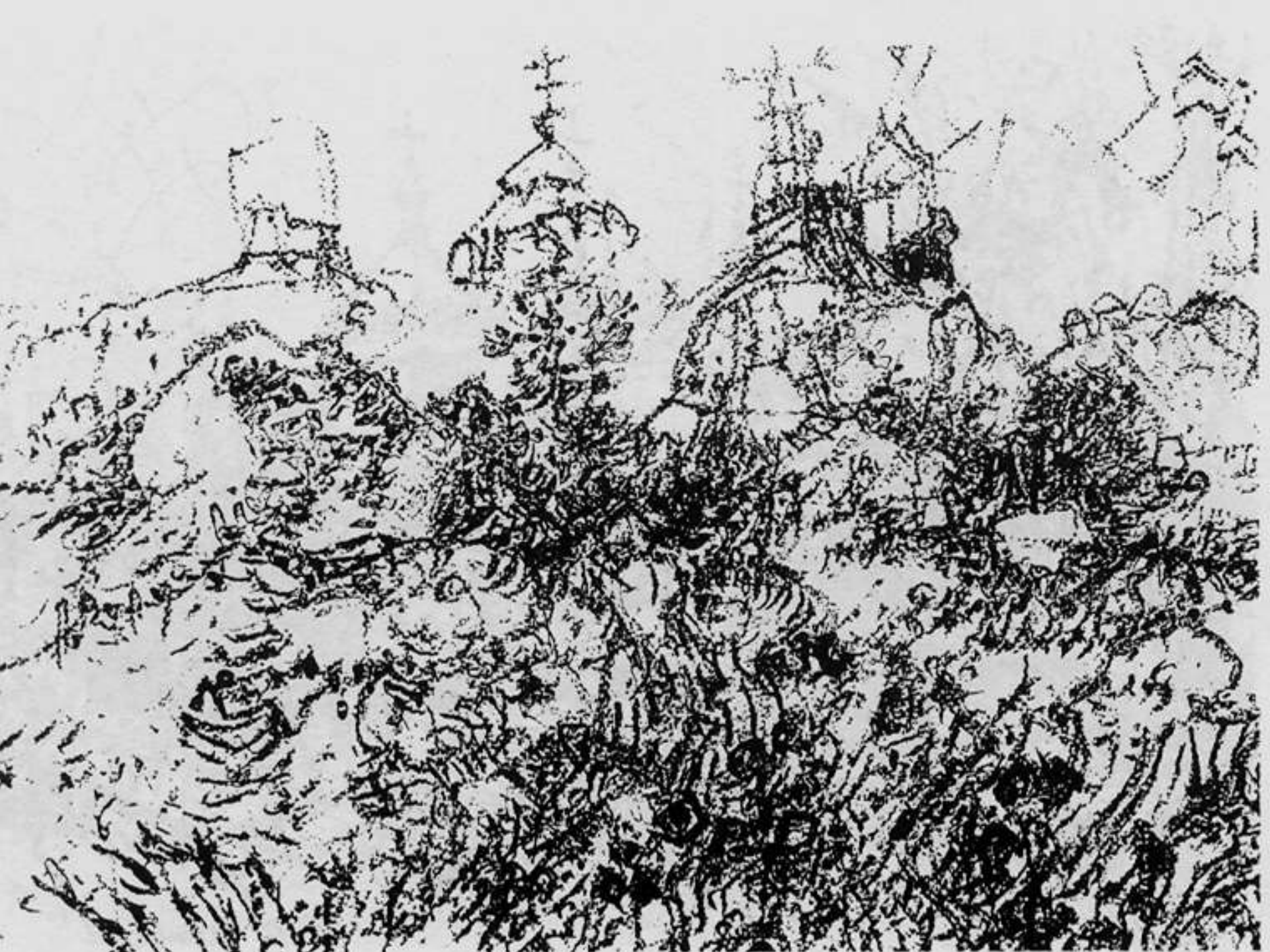






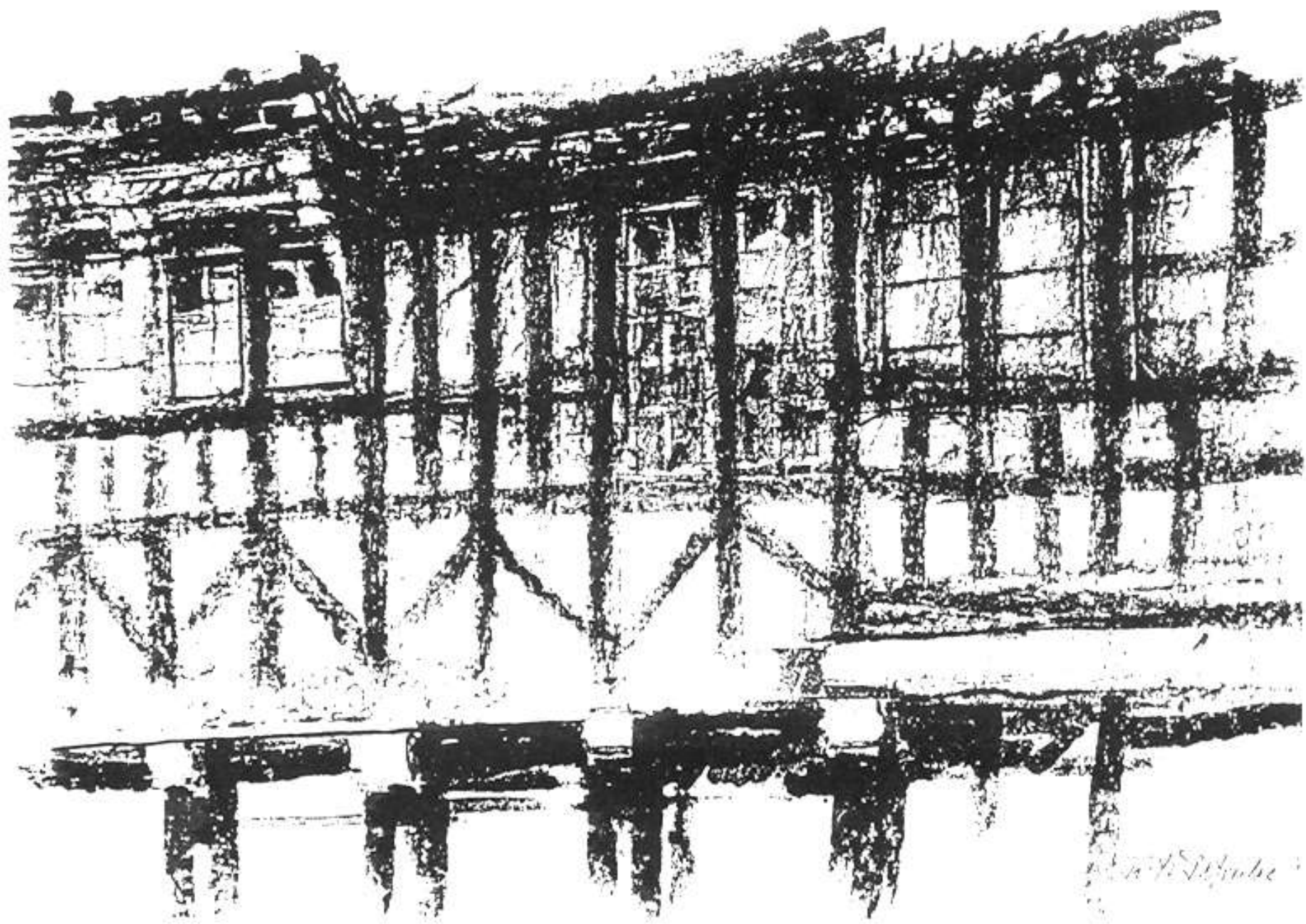
Kościół w Anieku.

Wł. Tatouka '91

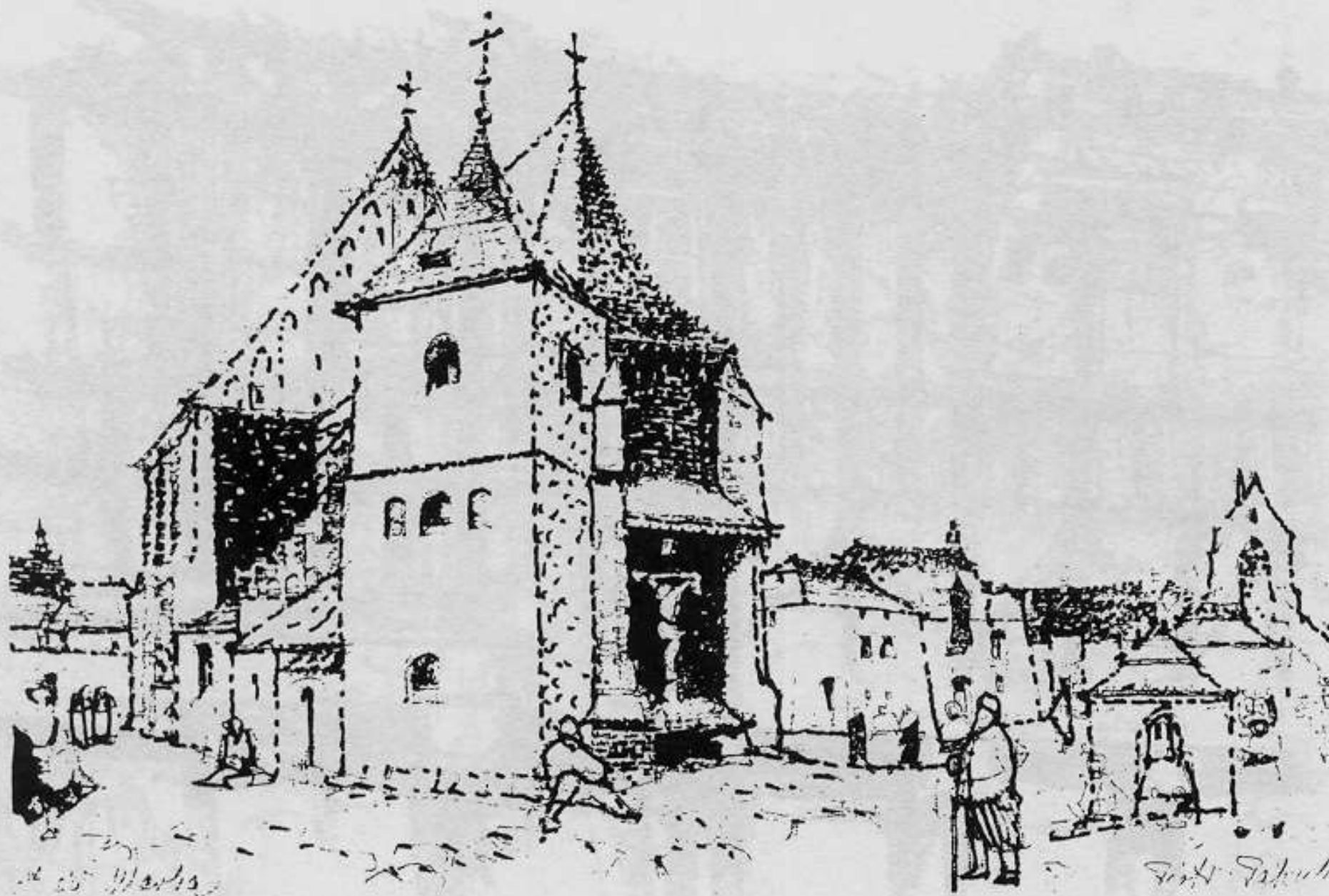






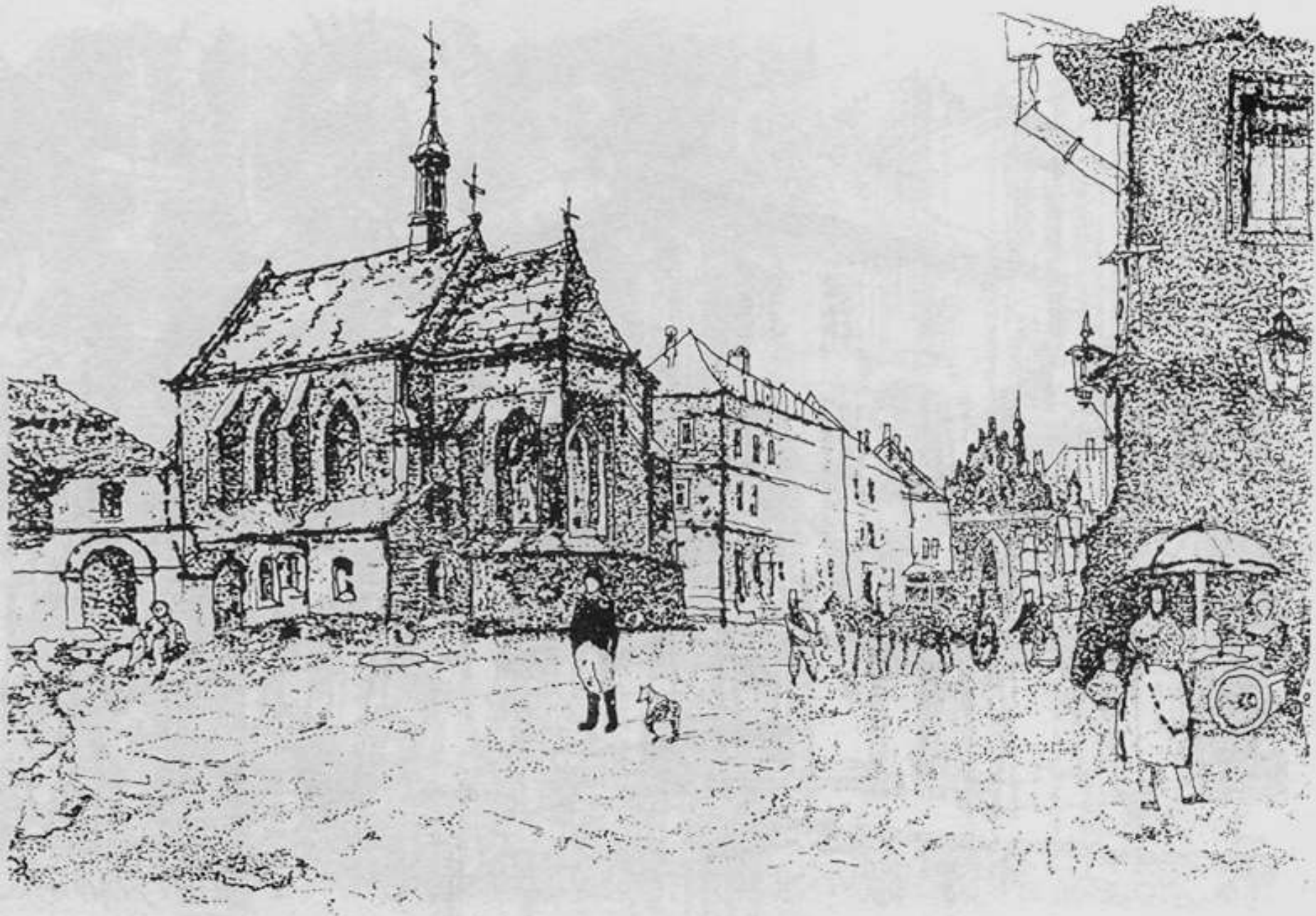


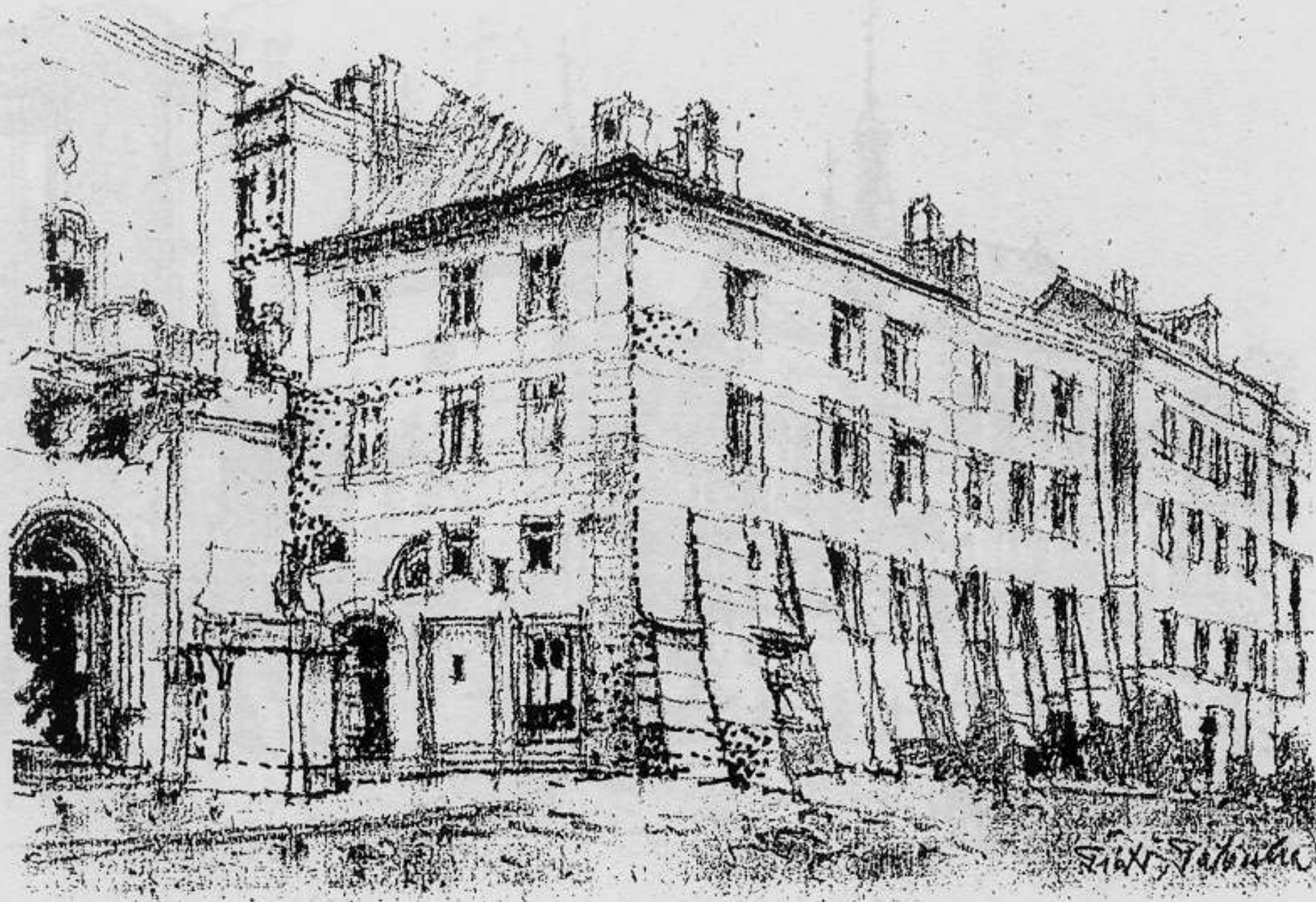
W. H. White

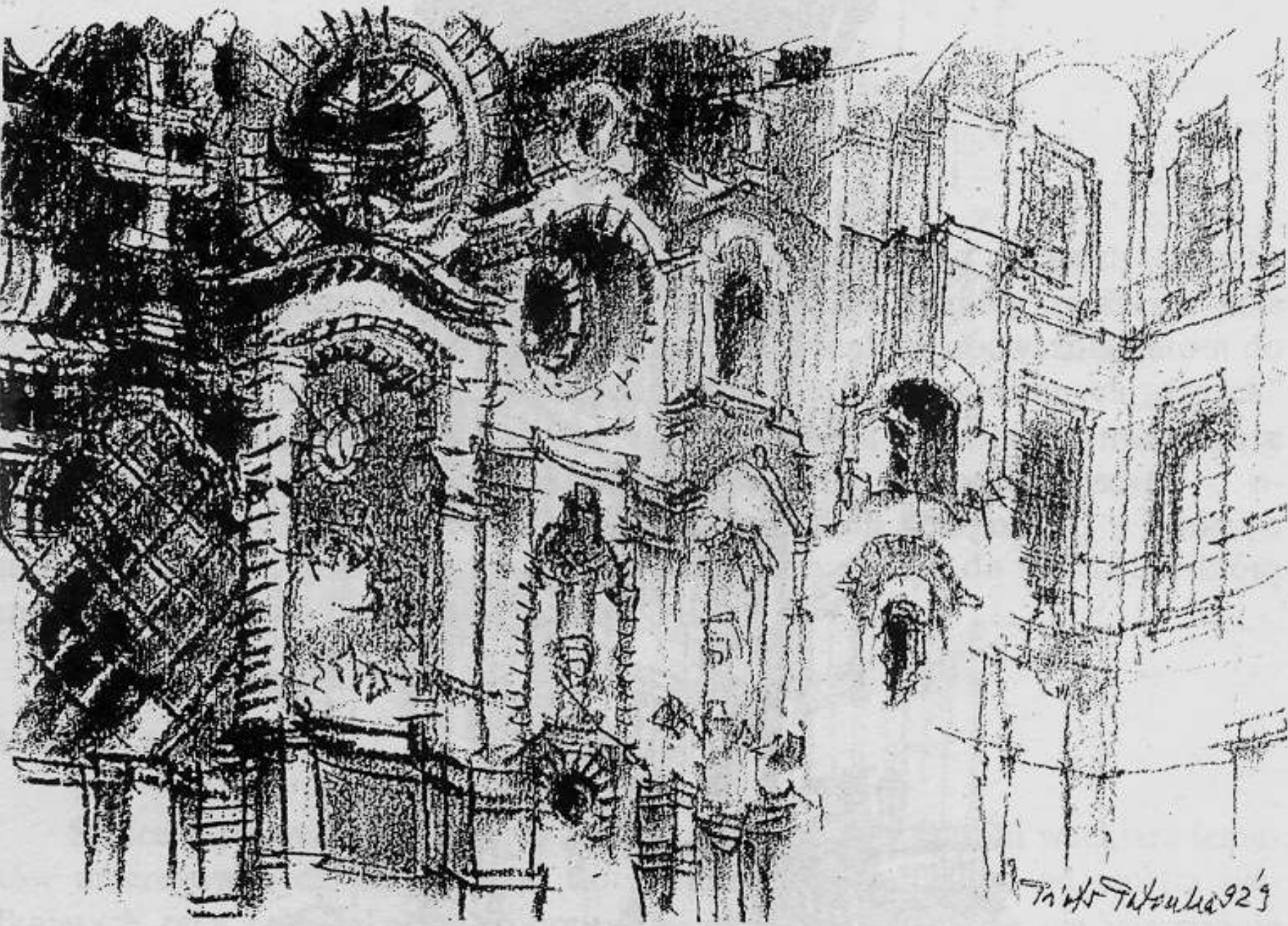


St. Martin

St. Martin







T. H. T. 1929

